



**// TAMARIND®**

Premium Antiscratch Acrylics

We have designed a wide range of elegant and creative designs with textures and colours that will adorn your surfaces with a subliminal and stylish grace. Every product is crafted with a passionate and serene aura that will enamour everyone who enters your home and spaces. Choose the perfect design for your decors and spaces.

Opulence

# Exquisite



Anti Scratch



Anti Yellow



100%  
Pure  
Acrylic

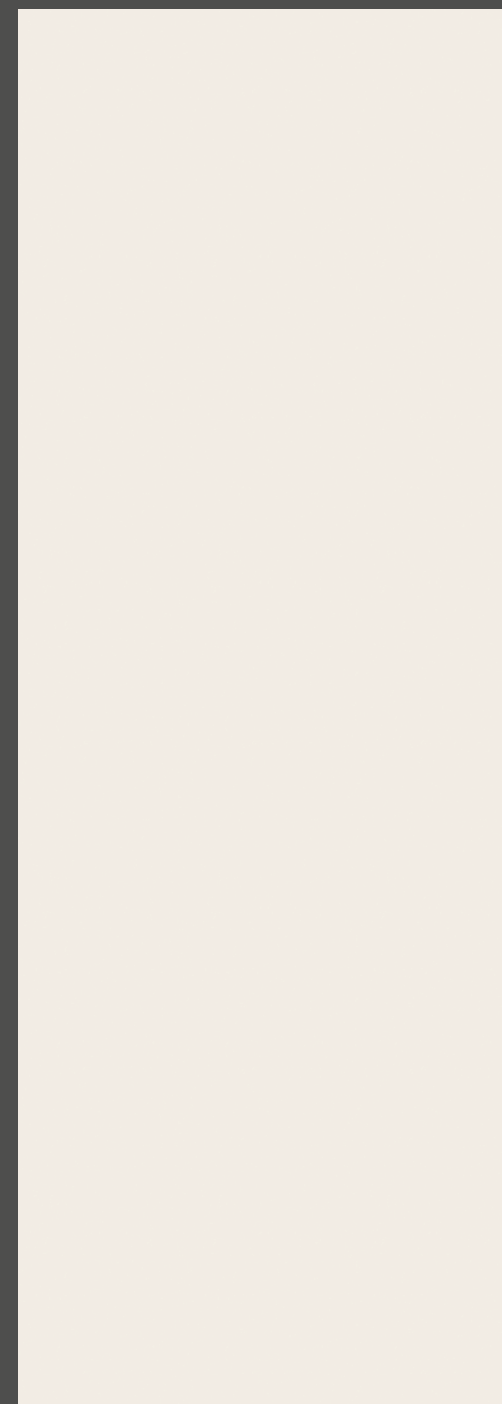


Water  
Resistant

**TAMARIND**  
Premium Antiscratch Acrylics



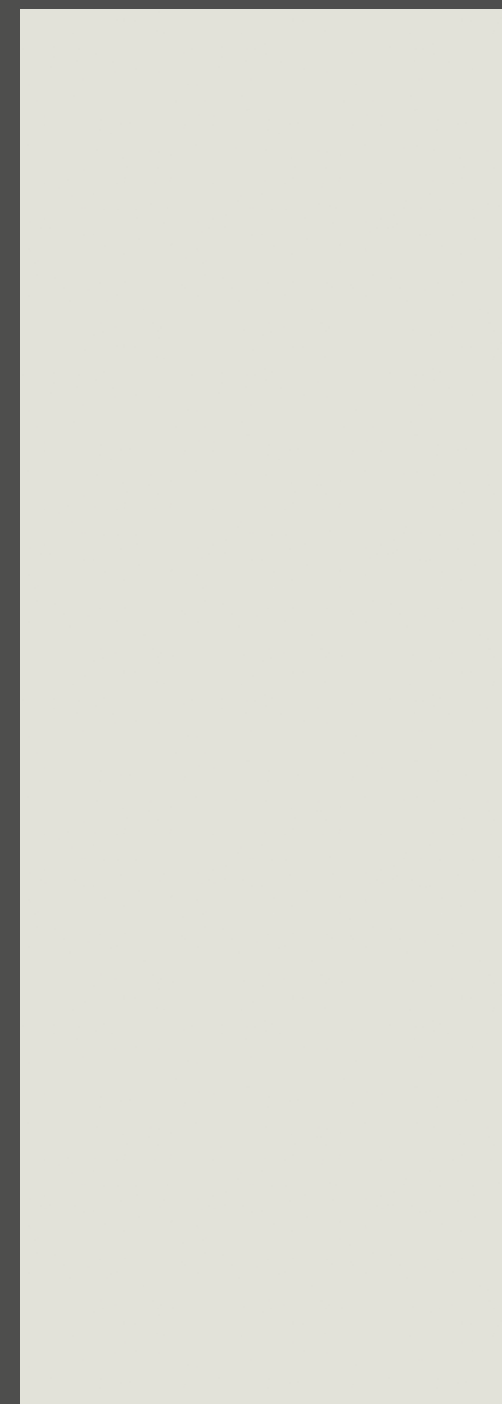
THE CHARM OF  
*Perfection*



2002 - TM | Subtle Cream



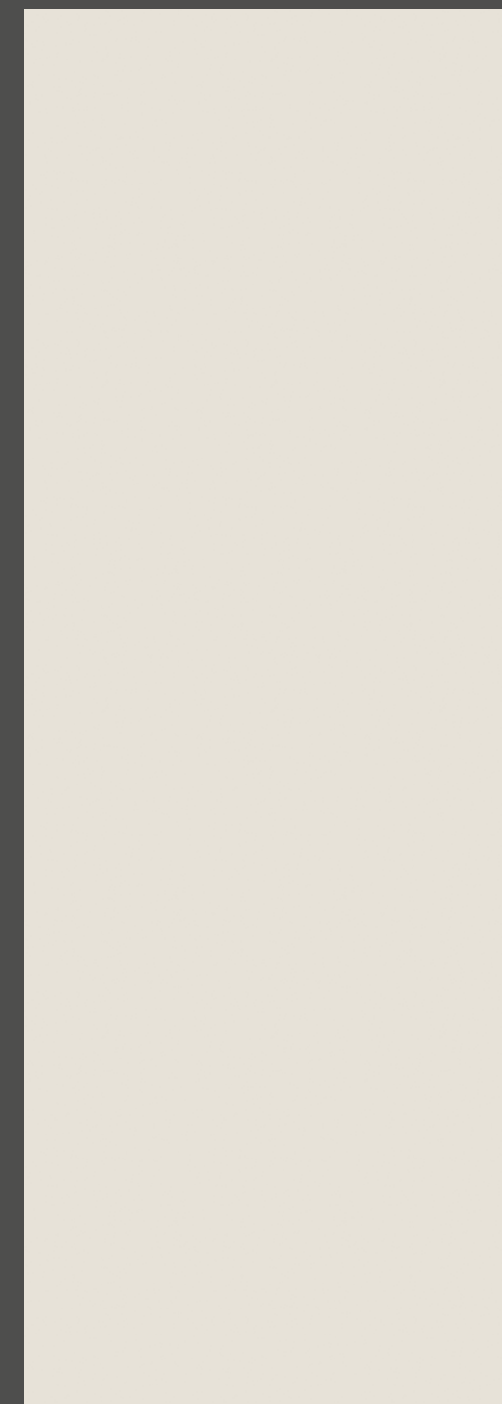
2002 - EB | Subtle Cream



2051 - TM | Soft Grey



2051 - EB | Soft Grey



2052 - TM | Elegant Cream

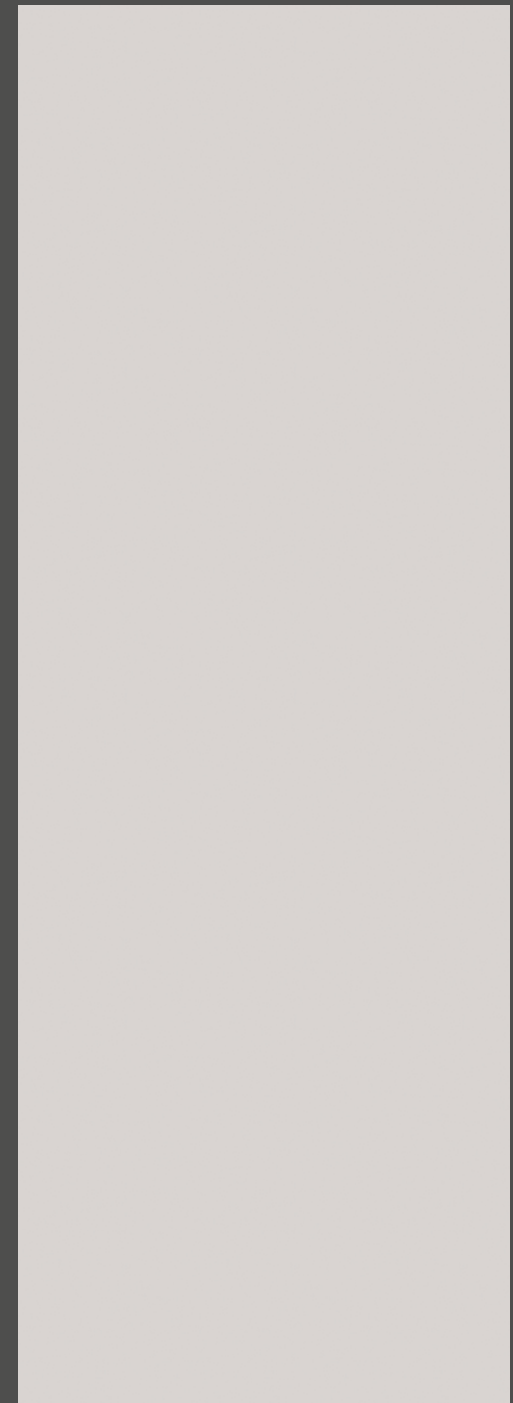


2052 - EB | Elegant Cream



2052-TM

# Serene



2050 - TM | Dense White



2050 - EB | Dense White



2004 - TM | Camel White



2004 - EB | Camel White



2053 - TM | Soft Green



2053 - EB | Soft Green

DECORATE THE SPACE WITH  
*parvache*



Anti Scratch



Anti Yellow



100%  
Pure  
Acrylic



Water  
Resistant

**TAMARIND**  
Premium Antiscratch Acrylics



2053-TM

# Stunning



Anti Scratch



Anti Yellow



100%  
Pure  
Acrylic



Water  
Resistant

**TAMARIND**  
Premium Antiscratch Acrylics



2059 - TM | Fresh Grey



2059 - EB | Fresh Grey



2054 - TM | Bold Brown



2054 - EB | Bold Brown



2055 - TM | Dense Brown



2055 - EB | Dense Brown



ADD ELABORATE  
*features*

# Delightful



Anti Scratch



Anti Yellow



100%  
Pure  
Acrylic



Water  
Resistant

**TAMARIND**  
Premium Antiscratch Acrylics



2060 - TM | Deep Grey



2060 - EB | Deep Grey



2018 - TM | Forest Grey



2018 - EB | Forest Grey



2019-TM



2019 - TM | Soil Grey



2019 - EB | Soil Grey



2061 - TM | Elegant Black



2061 - EB | Elegant Black

*Fabulous*

# Terrific



Anti Scratch



Anti Yellow

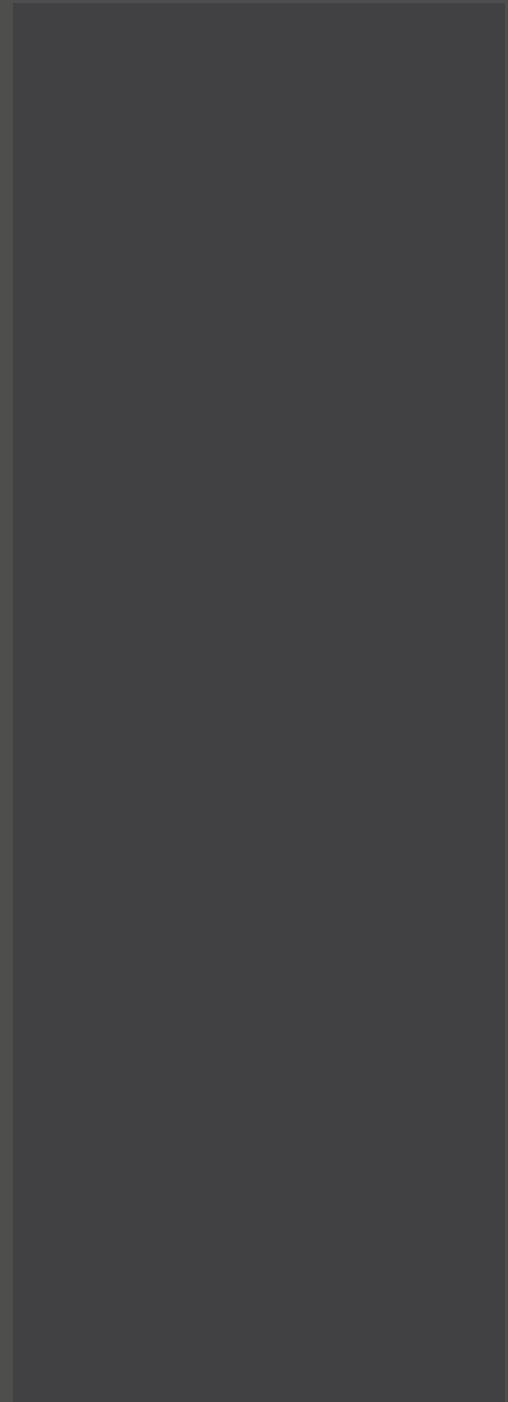


100%  
Pure  
Acrylic



Water  
Resistant

**TAMARIND**<sup>®</sup>  
Premium Antiscratch Acrylics



2062 - TM | Dull Black



2062 - EB | Dull Black

2063 - TM | Dull Black



2035 - TM | Sparkling Black



2035 - EB | Sparkling Black



# Magnificent



Anti Scratch



Anti Yellow

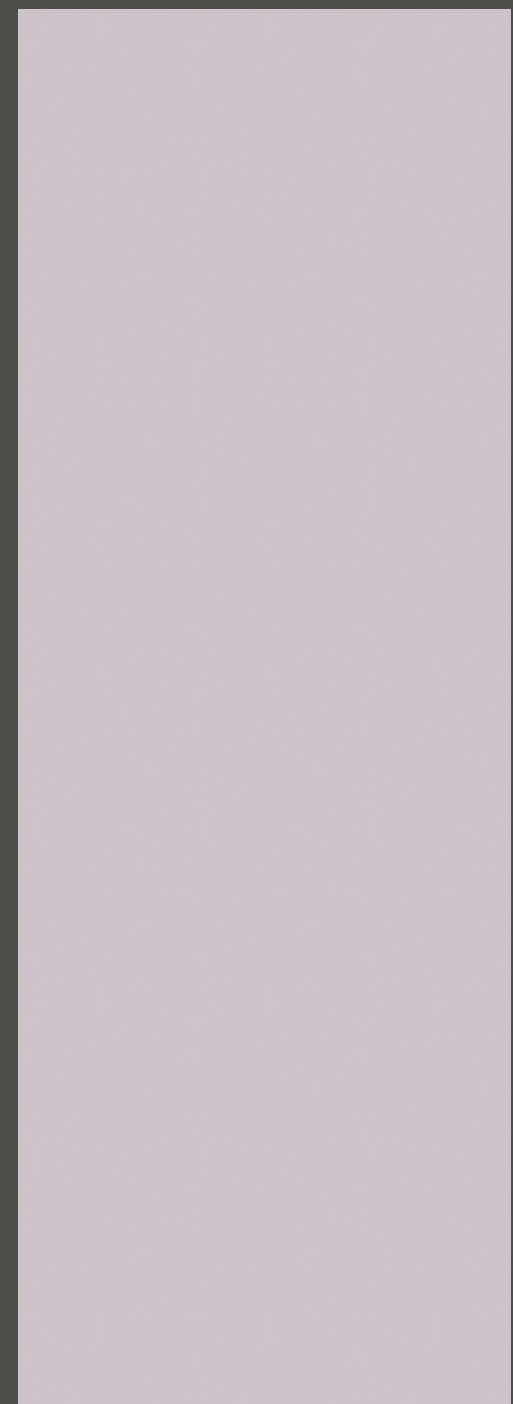


100%  
Pure  
Acrylic



Water  
Resistant

**TAMARIND**  
Premium Antiscratch Acrylics



2022 - TM | Soft Lavender



2022 - EB | Soft Lavender



2023 - TM | Deep Lavender



2023 - EB | Deep Lavender



MARVEL AT THE  
*visual*



2023 - TM | Lush Lavender



2023 - EB | Lush Lavender



2073-TM

LAYERS OF  
*precision*

# Winsome



Anti Scratch



Anti Yellow



100%  
Pure  
Acrylic



Water  
Resistant

**TAMARIND**<sup>®</sup>  
Premium Antiscratch Acrylics



2074 - TM | Deep Purple



2074 - EB | Deep Purple



2002 - TM | Subtle Cream



2002 - EB | Subtle Cream



2075 - TM | Light Purple



2075 - EB | Light Purple

*Lovely*



CREATIVE AND  
*Contemporary*

# Aesthetic



Anti Scratch



Anti Yellow



100%  
Pure  
Acrylic



Water  
Resistant

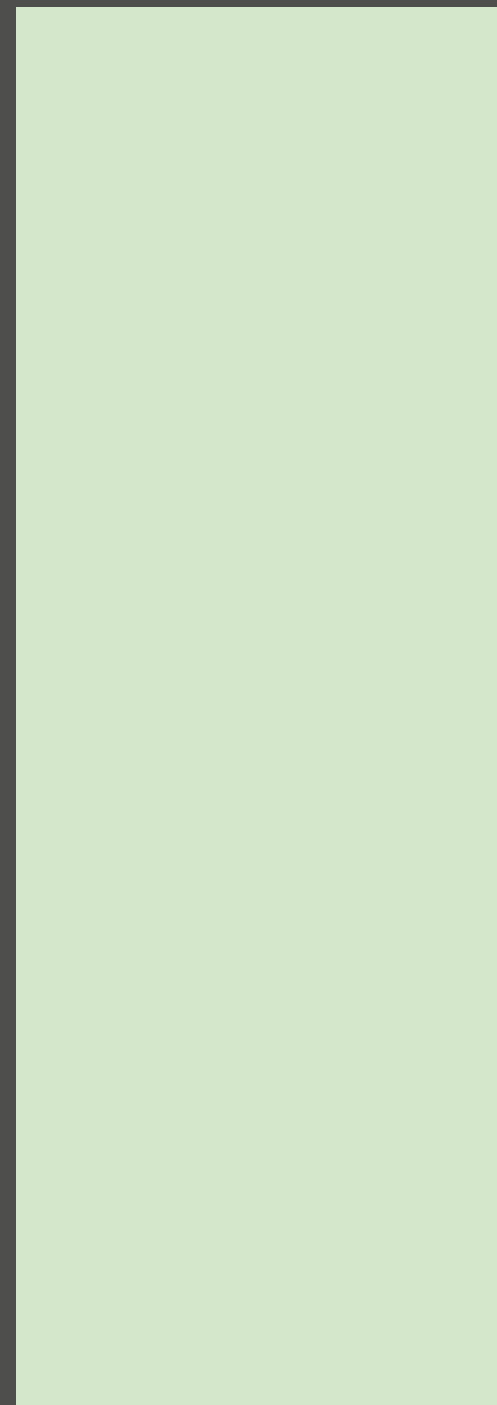
**TAMARIND**<sup>®</sup>  
Premium Antiscratch Acrylics



2069 - TM | Sapling Green



2069 - EB | Sapling Green



2068 - TM | Ocean Green



2068 - EB | Ocean Green



2029 - TM | Rocky Green



2029 - EB | Rocky Green



2066-TM | Ocean Blue



2066 - EB | Ocean Blue

*Modern*

# Grandeur



Anti Scratch



Anti Yellow



100%  
Pure  
Acrylic



Water  
Resistant

**TAMARIND**  
Premium Antiscratch Acrylics



2064 - TM | Sedimentary Grey



2064 - EB | Sedimentary Grey



2065 - TM | Lavish Grey



2065 - EB | Lavish Grey



2065-TM



2067 - TM | Plush Blue



2067 - EB | Plush Blue



2030 - TM | Serene Green



2030 - EB | Serene Green

*glorious*



2030-TM

# Urbane



Anti Scratch



Anti Yellow



100%  
Pure  
Acrylic

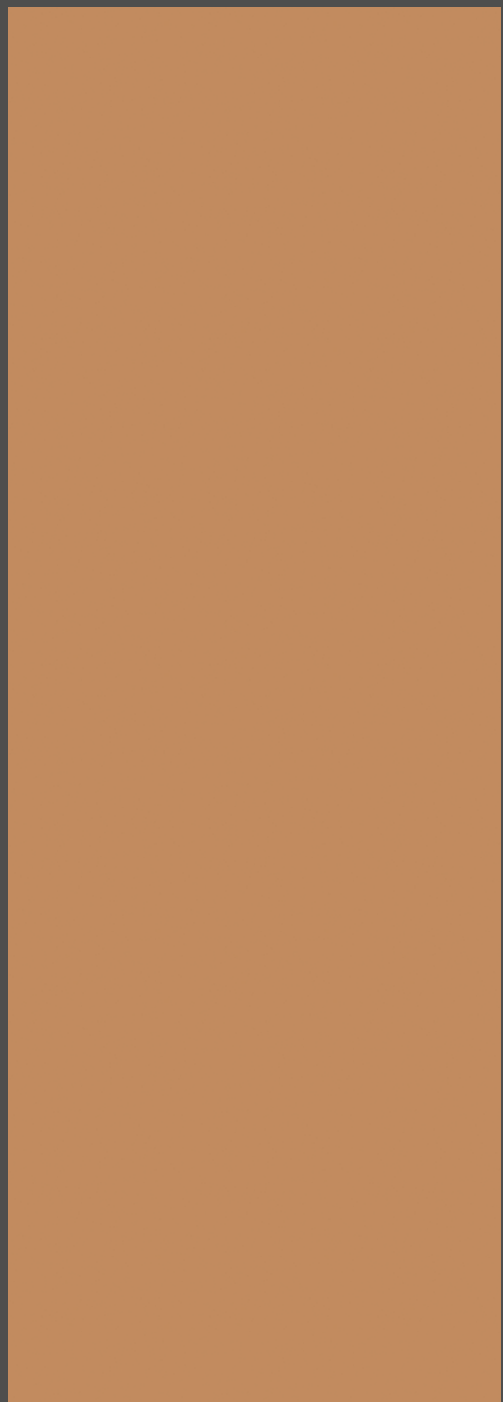


Water  
Resistant

**TAMARIND**<sup>®</sup>  
Premium Antiscratch Acrylics



HIGHLIGHT YOUR  
*spaces*



2070 - TM | Deep Orange



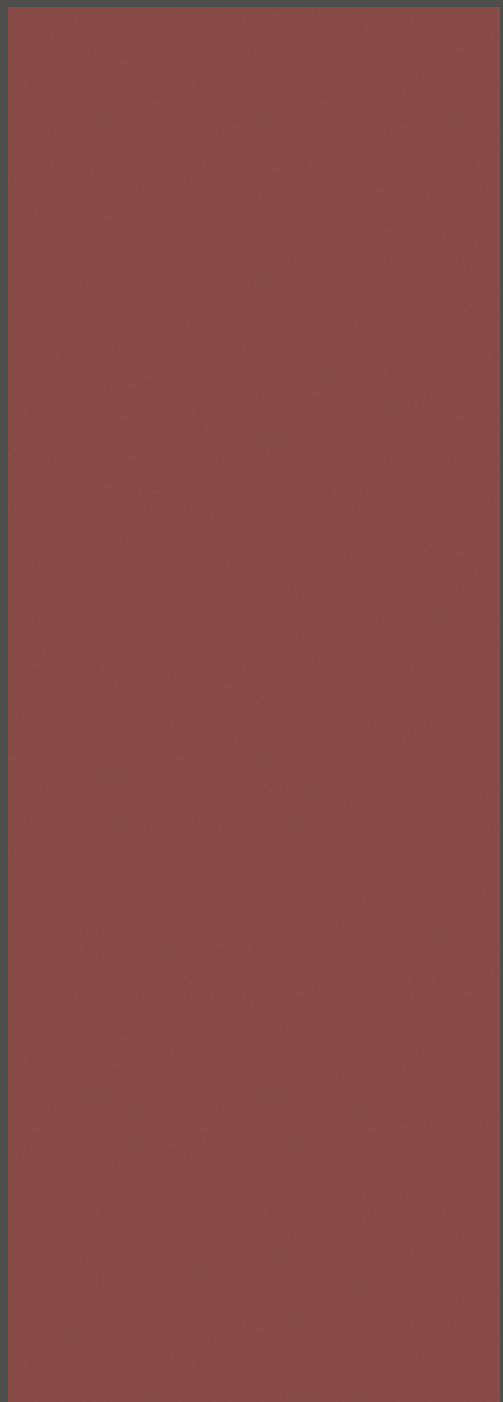
2070 - EB | Deep Orange



2072 - TM | Subtle Red



2072 - EB | Subtle Red



2071 - TM | Mud Red



2071 - EB | Mud Red



# Opulent



Anti Scratch



Anti Yellow

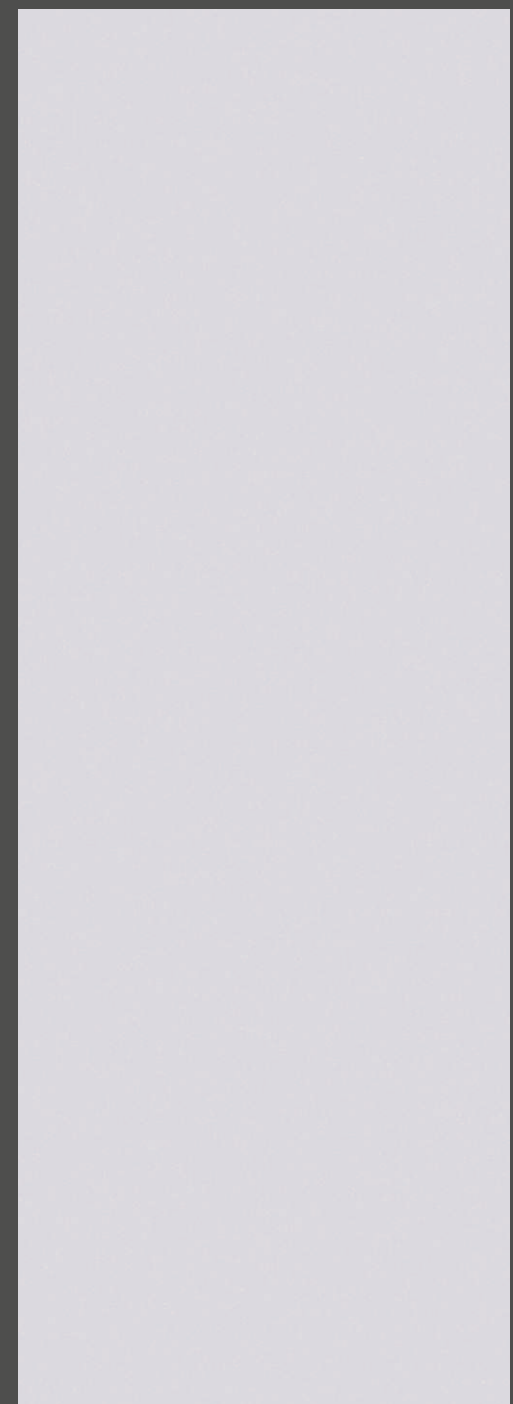


100%  
Pure  
Acrylic

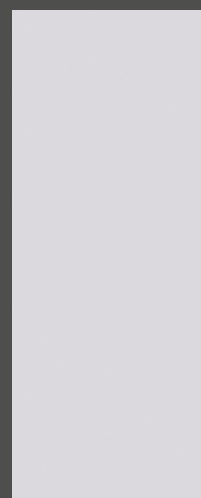


Water  
Resistant

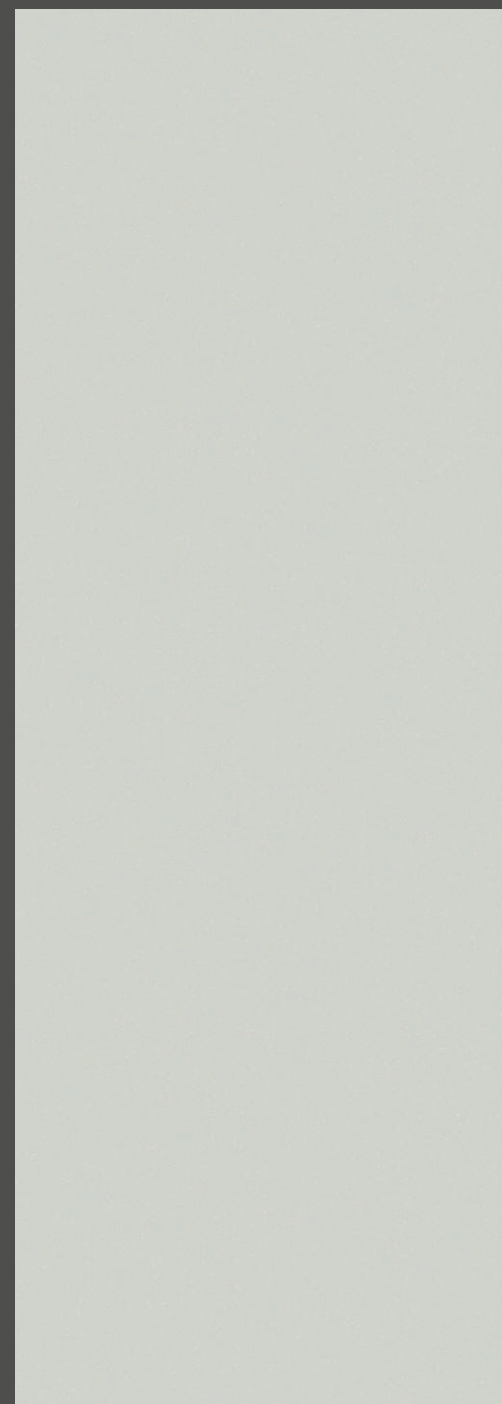
**TAMARIND**  
Premium Antiscratch Acrylics



2078 - TM | Subtle Purple



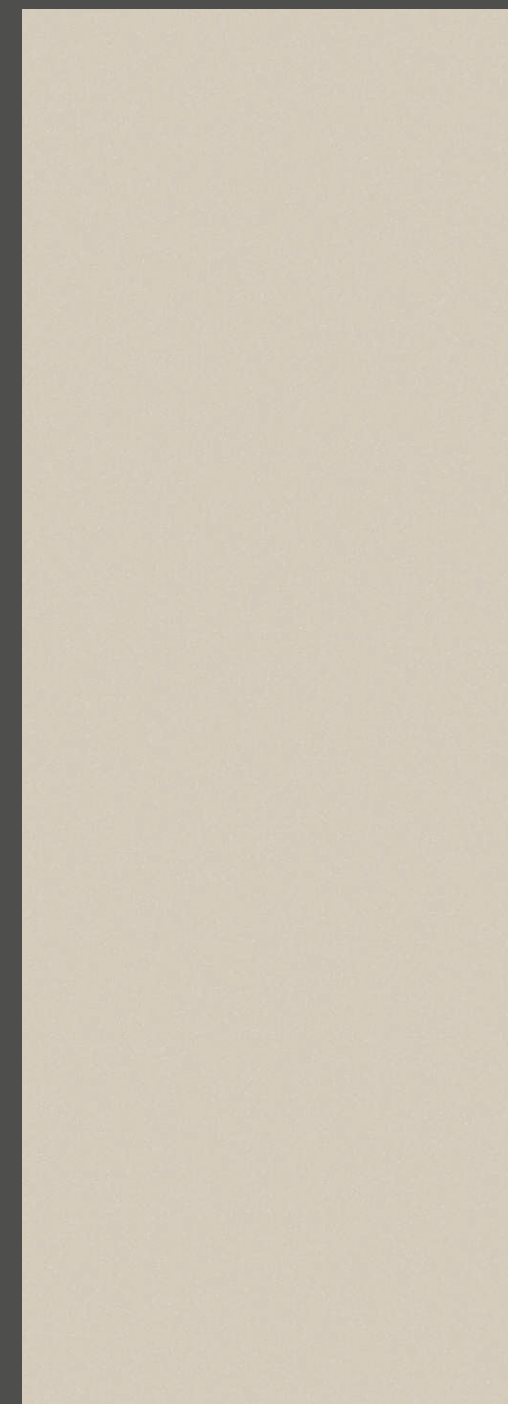
2078 - EB | Subtle Purple



2079 - TM | Sky Green



2079 - EB | Sky Green



2080 - TM | Peach Cream



2080 - EB | Peach Cream

ADD A LUXURIOUS  
*ambience*



ENRICH WITH  
*Bold Colours*

# Refined



2056-TM



Anti Scratch



Anti Yellow



Pure  
Acrylic



Water  
Resistant

**TAMARIND**<sup>®</sup>  
Premium Antiscratch Acrylics



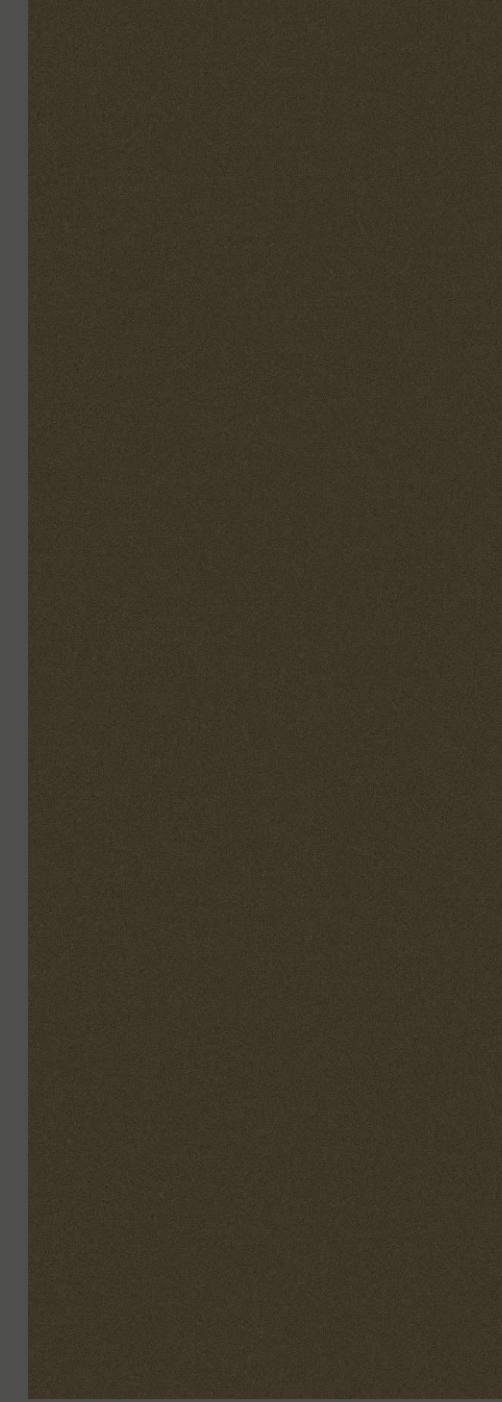
2056 - TM | Plant Brown

2056 - EB | Plant Brown



2057 - TM | Sunlight Brown

2057 - EB | Sunlight Brown



2058 - TM | Garden Brown

2058 - EB | Garden Brown

*Sophisticated*

# Enticing



Anti Scratch



Anti Yellow



100%  
Pure  
Acrylic



Water  
Resistant

**TAMARIND**  
Premium Antiscratch Acrylics



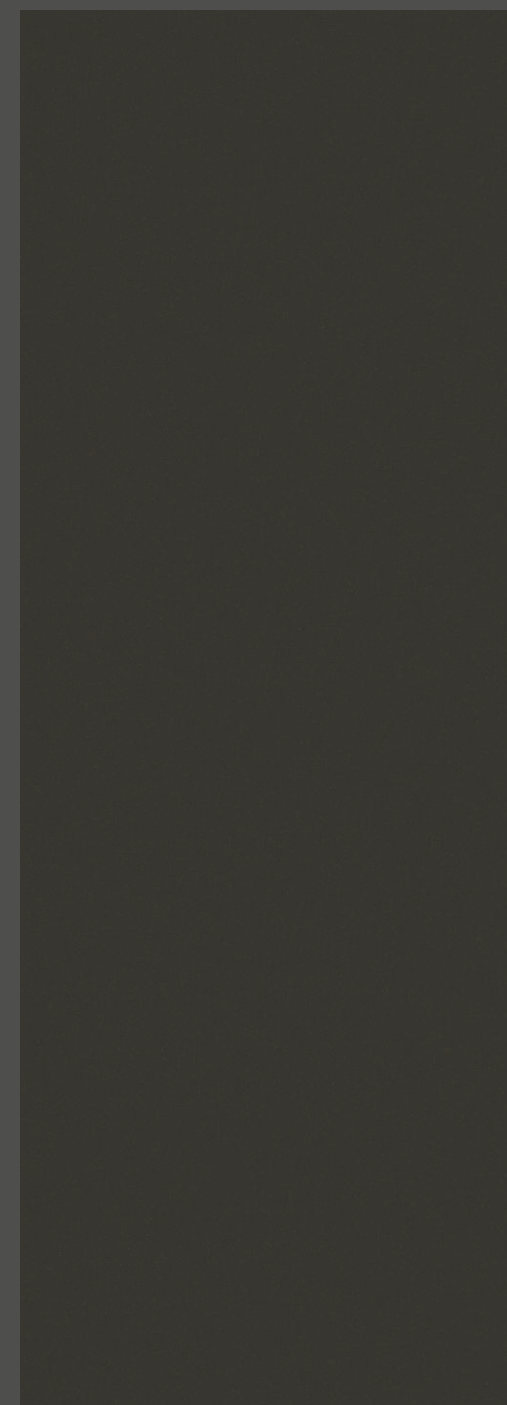
2081 - EB | Coffee Brown

2081 - TM | Coffee Brown



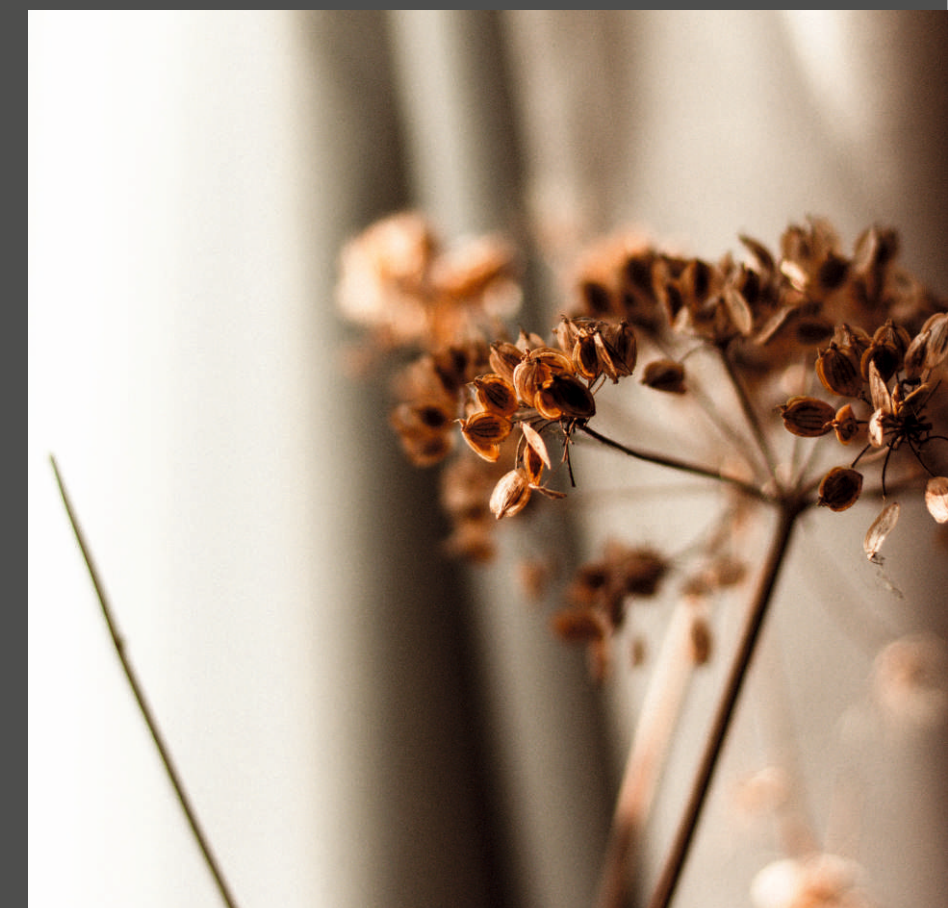
2082 - EB | Pastel Brown

2082 - TM | Pastel Brown



2083 - EB | Sparkling Brown

2083 - TM | Sparkling Brown



ELEGANCE AND  
*Poise*

# Stellar



Anti Scratch



Anti Yellow



100%  
Pure  
Acrylic



Water  
Resistant

**TAMARIND**  
Premium Antiscratch Acrylics



2086 - TM | Sharp Grey



2086 - EB | Sharp Grey



2084 - TM | Cola Black



2084 - EB | Cola Black



2085 - TM | Sea Green



2085 - EB | Sea Green



# Cascading



Anti Scratch



Anti Yellow



100%  
Pure  
Acrylic

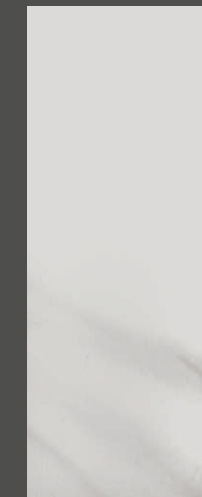


Water  
Resistant

**TAMARIND**  
Premium Antiscratch Acrylics



2077 - TM | Fresh Calacatta



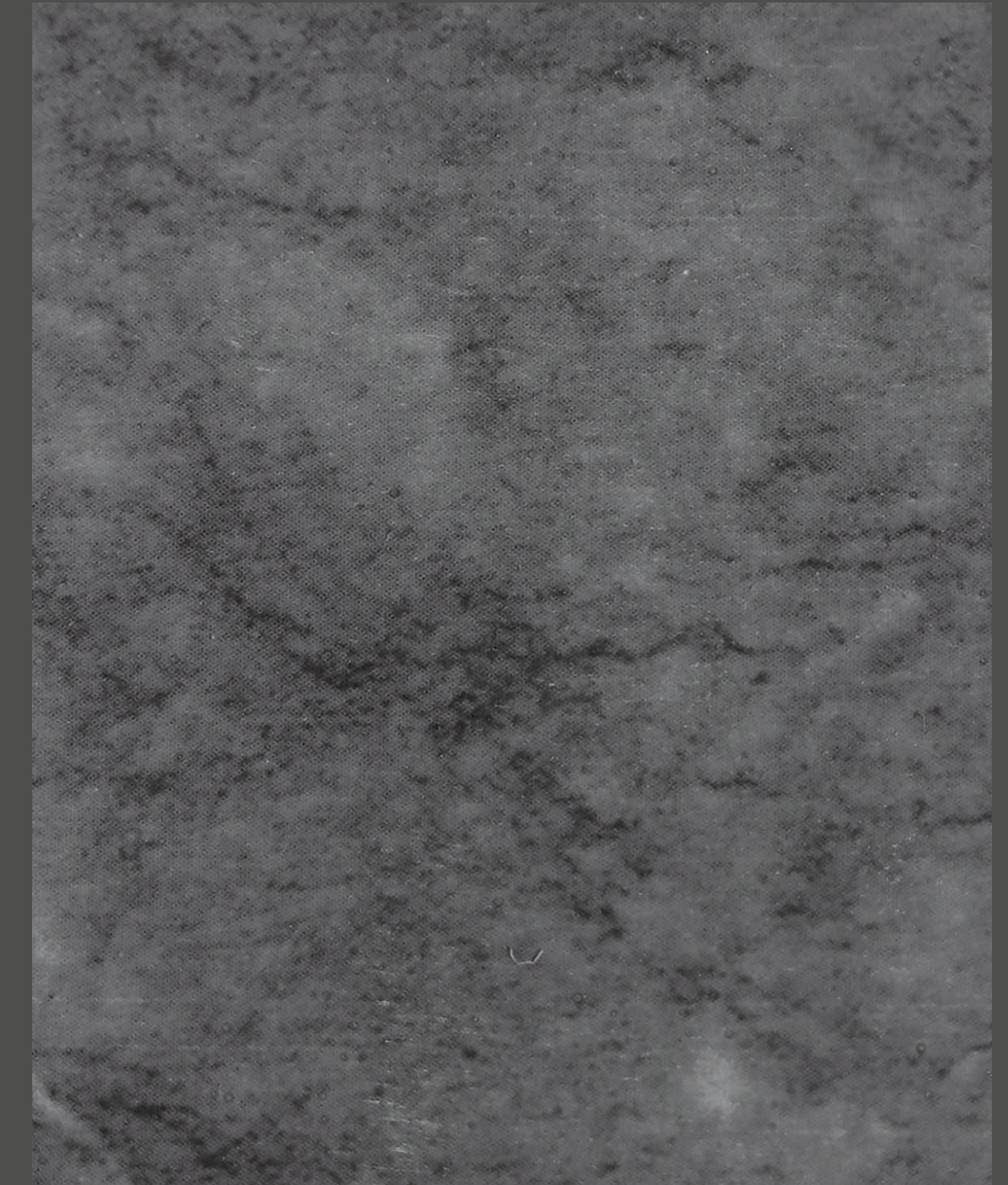
2077 - EB | Fresh Calacatta



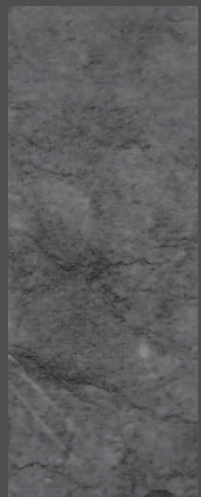
2077-TM



2076-TM



2076 - TM | Grey Granite



2076 - EB | Grey Granite

*Pristine*



# Authentic

## Mirror Series



Anti Scratch



Anti Yellow

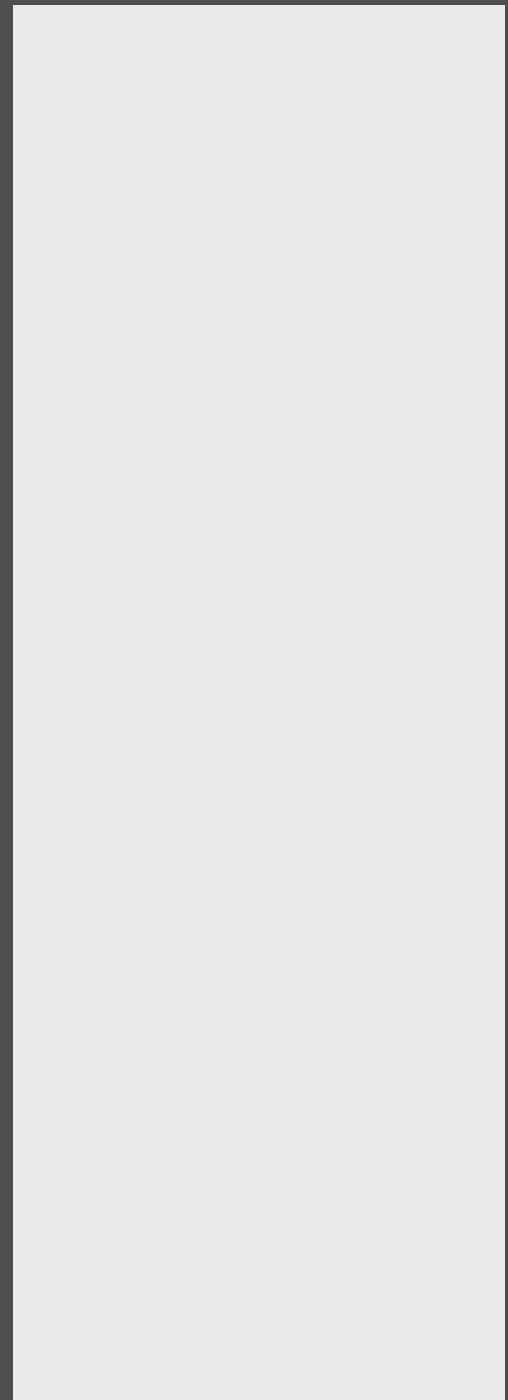


100%  
Pure  
Acrylic



Water  
Resistant

**TAMARIND**  
Premium Antiscratch Acrylics



01 - MR | SILVER



02 - MR | GREY



03 - MR | COPPER



04 - MR | GOLD



04 - MR

## Collection

Available in Size : 2440mm x 1220mm ( 8feet x 4 feet )

Thickness : 1.3mm

## General Use & Care Guide

TAMARIND laminate are manufactured with aesthetics and durability in mind. when used as recommended and with appropriate care, our laminates will last through the years. TAMARIND laminate are easy to maintain.

### LAMINATES

- Cleaning Should be done with water and a dean, non-abrasive Cloth.
- To remove more stubborn stains, use mild household cleansers like colin IP gently wipe down with a non-abrasive cloth.
- Avoid the use of abrasive liquid cleansers, bleaching compounds or solution as these may damages the surface of the laminate.
- Do not place hot cookware directly on the laminate. Prolonged exposure to temperatures above 30 degree Celsius may cause damage to the laminate surface.
- Do not use the laminate for purposes that it is not intended for (E.g. do not iron, chop, hammer or expose the laminate to open flame.
- Outdoor application of the laminate with exposure to direct sunlight and weather conditions are not recommended.
- UV rays may reshape the laminate.
- Gloss surfaces are recommend only for vertical application.
- Do not use thinner and lolvene on the surface of the Tamarind laminates.this may cause Decourisation of the surface.
- Typically confirm to internationally recognize technical standards.
- Have a thickness balance of +/- 10%
- Peel off the protective film after processing.

### THE WAYS YOU CAN ENJOY THE ROYAL NESS OF TAMARIND TO MAKE YOUR DREAMS ALIVE IN SMART WAY.

- To avoid the problems of appearing air bubbles and any yellow colour dullness or yellow patches problem in the laminate sheet after instollation of TAMARIND laminate, Customer should know the some facts befor buying TAMARIND laminate.
- As TAMARIND laminate is 6H Acrylic laminate which have the scratch resistance characteristic and look like back painted glass of colour lamination
- Please Follow some fact about installation of TAMARIND laminate.
- Please check the laminate at the time of delivery, check it whether it was not damage in transportation & handling and then use for installation.
- Before installing TAMARIND laminate make sure that sustrate (Plywood MDF, Particle Board) is good and superior quality of calibrated thickness and even surface.

- If there is usage of any interior quality or not as per standard quality dipped plywood and dipped lipping patti, kindly scrub dipped colour layer by using sand paper. Then use TAMARIND laminate to avoid yellow colour patches.
- Clean the surface of substrate (Plywood, MDF, Particle Board) to make free from dust of grease by cloth, soft brush, sponge or sand paper.
- Always use acrylic glue.
- Stir the adhesive before using it, and do not mix water in adhesive.
- Spread the adhesive uniformly by brush, roller or adhesive spreader on both TAMARIND laminate and substrate (Plywood, MDF, Particle Board).
- Use soft pinch roller or normal pressing technique at the time of pressing TAMARIND laminate on the substrate (Plywood, MDF, Particle Board). And also pressing should be done from the middle of the panel and move towards to side line and corners of panel. So that air between the TAMARIND laminate and substrate (Plywood, MDF, Particle Board) will Remove.
- Please make sure, to give sufficient amount of pressing to TAMARIND Laminate for almost 24hrs to achieve full bonding strength.
- Please do not use synthetic rubber adhesive (SR, JAT Pat, Bostic, Heatxetc.)
- After the installation of TAMARIND Laminate please avoid the direct sunlight on it.
- Please don't place hot cookware directly on the TAMARIND Laminate. Prolonged exposure to temperature above 30°C may cause patches to TAMARIND Laminate.

## IMPORTANT INFORMATION

### WHY AIR BUBBLE APPEARS IN BETWEEN ACRYLIC LAMINATE AND SUBSTRATE (PLYWOOD, MDF, PARTICLE BOARD) AFTER THE INSTALLATION?

There are many reasons which lead to air bubble problems are follow as:

- Bonding of Acrylic laminate under high humidity atmosphere
- Using of water base syrtheliaeasin adhesive or other than PEVA (Polyethylene Vinyl Acetate Co-polymer) adhesive may also lead to air bubble after the installation Acrylic laminate.
- Many of time due to uncertain weather conditions Substrate (Plywood, MDF, Particle Board) absorbed moisture. after few days of installation Acrylic laminate on substrate, substrate gradually loses moisture. that moisture is the result of air bubble between Acrylic laminate and substrate after installation
- Using odd uneven surface Substrate (Plywood, MDF, Particle Board) Lead to debone at particular area of Acrylic laminate sheet and air bubble appear at that area after the installation
- Lack of pressing and short period of pressing at the time of bonding period of Acrylic laminate also lead to air bubble after the installation of Acrylic laminate.

## WHY YELLOW PATCHES AND COLOUR FADE PROBLEM APPEARS AFTER THE INSTALLATION OF ACRYLIC LAMINATE?

The reason behind these problems are as follows:

- When Acrylic laminates experience the direct fall of sunlight on it which leads to discolouring, fading and yellowness in laminate.
- Using of inferior quality or not as per standard quality dipped plywood dipped lipping patti may lose the colour due to chemical reaction between adhesive at the time of bonding period and yellow patches appear after the installation.
- Using of synthetic rubber adhesive (SR/JatPat, Bostic, Heatex) lead to brown or occur colour patches on Acrylic laminates.
- Prolonged exposure temperature above 30° car placing hot cookware directly on the Acrylic laminates cause patches on Acrylic laminates surface.

Parameters	Acrylic Laminate	High Gloss Laminate/Mica	PU Coating/ Duco Paint	Back Painted Glass
Gloss Level	>90	>70	>85	>85
Scratch Proof	6H Antiscratch	No	No	No
Color Consistency	Excellent	Not Good	Not Good	Not Good
Orange Peel	No	Yes	Yes	No
UV Resistance	Excellent	Bad	Bad	Bad
Water Resistance	Excellent	Good	Bad	Bad
Volatile Organic Compounds (VOCs)	No	Yes	Yes	Yes

### LIMITED WARRANTY

- Products are reasonably free of defects and when properly handled and fabricated will comply, within reasonable deviations to applicable manufacturing specifications. Clients are advised to inspect product thoroughly prior to installation. Warranty will not cover defects and non-compliance from otherwise attributable to any other causes, including without limitation:
  - Improper handling / transportation /storage of the products.
  - Lack of / or improper maintenance of the products.
  - Exposure of the products to extreme temperatures.
  - Unauthorized alteration to the products.
  - Outdoor applications.
  - No guarantee and no exchange in any circumstances.
  - There can be colour variation in material from different batches. It is advised to use same batch material to avoid colour variations.
  - Actual colours of the acrylic sheet may vary from this brochure.

### PLEASE FOLLOW THE INSTALLATION AND MAINTENANCE AND MAINTENANCE TIPS:

- Before buying please check sticker on the product and ensure that you bought original product.
- Check the laminate on the time of delivery whether it has not damaged during transportation and handling and then use for installation.
- Before installation make sure the substrate (MDF, Plywood, Particle Board) is in good quality, with even surface and calibrated thickness.
- Clean the Substrate surface by cloth, sponge, soft brush or sand paper to make free from dust or gease.
- Always use water based PVACP (Polyethylene Vinyl Acetate Co-Polymer ) adhesive like for laminates. Stir the adhesive gently before using it and do not mix water in the same.
- Spread the adhesive uniformly on both laminate and base substrate by brush , roller or adhesive spreader.
- Keep at least 2MM grove between 02 pieces of laminates, so at the time of pressing it will be easy to remove air between the laminate and base substrate. Use soft pinch roller or normal pressing technique and the pressing should be done from the middle of the panel and move towards the sided line and corners.
- Please make sure to give sufficient amount of pressing to laminate for almost 12hrs to 15hrs to achieve full bonding strength.
- Remove the protective film within 7-15days after completion of installation.

### DO'S AND DON'T'S

- Store the laminates below 30 C temperature. To avoid the inside cracks & stretch line , do not share acrylic sheet in roll form.
- Clean the surface of laminate with water and clean, non-abrasive cloth. We recommend cleaning with COLIN glass cleaner and soft MICRO fibre cloth .
- Glossy surfaces recommended to use in vertical applications.
- Do not use cleaners based on alcohol, solvent, petrol , pinewood or oil as these may damage the surface of the laminate. Do not use other than micro fibre.
- Do not use thinner on the surface of laminates.
- Do not place hot cookware directly on the laminate as the exposure to temperatures above 30C may cause damage to the laminate surface.
- Outdoor application of the laminate with exposure to direct sunlight and weather conditions are strict not recommended. UV rays may de-shape the laminate.

## IMPORTANT INFORMATION

### AIR BUBBLE FORMATIONS ON LAMINATE :

- Using of water based adhesive or other than PVACP (Polyethylene Vinyl Acetate Co-polymer) adhesive may also lead to air bubble after the installation Of acrylic laminates. We recommend to use adhesive.
- Bonding of acrylic laminates under high humidity atmosphere.
- Using uneven surface substrate (Plywood, MDF, Particle Board) Lead to at particular area of acrylic laminates and air bubble appear at that area after the installation.
- Due to uncertain weather condition, base substrate may absorb moisture and after few days of installation base substrate gradually loses moisture resulting in air bubble formation between acrylic laminate and substrate.
- When more than 8' x 2' of Acrylic laminates is used for paneling, it can lead to air bubble after installation.
- Lack of bonding / pressing during the time of installation of acrylic laminates may lead to air bubble.
- Acrylic laminates should be kept evenly straight. If the laminates are in roll form, It should kept straight for minimum 48 hours and then can press and laminate on the surface for better results.

### YELLOW PATCHES AND COLOR FADE:

- Using of inferior of dipped plywood & dipped lipping patti can react with adhesive which may cause yellow patches after the installation.
- When Acrylic laminate experiences or faces direct to sunlight, it may cause discolouring, fading and yellowness in laminates.
- Prolonged exposure temperature above 30°C or placing hot cookware directly on the acrylic laminates cause patches on the surface.
- Using synthetic rubber adhesive (SR / JatPat, Bostic, Heatex) lead to brown / colour patches on acrylic laminates. We recommend to use adhesive.