

NIDA

NIDA



*CPS*

*CPS*

NIDA

**NIDA**

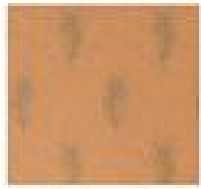
*CFS*

# NIDA

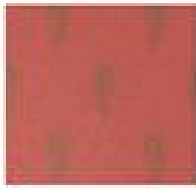
*This version is designed from design to materials,  
it must be both high quality, that is a basic requirement.*



# NIDA



P01 / 5001



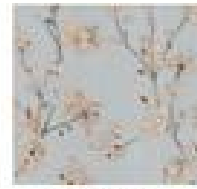
P02 / 5002



P03 / 5003



P04 / 5004



P05 / 5005



P06 / 5006



P07 / 5007



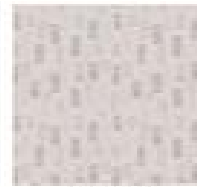
P08 / 5008



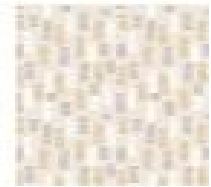
P09 / 5009



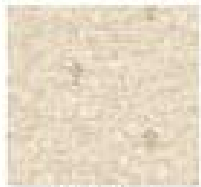
P10 / 5010



P11 / 5011



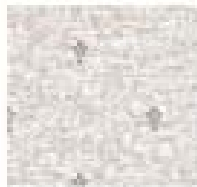
P12 / 5012



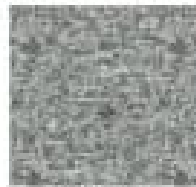
P13 / 5013



P14 / 5014



P15 / 5015



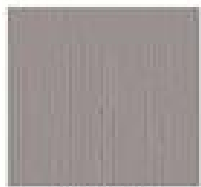
P16 / 5016



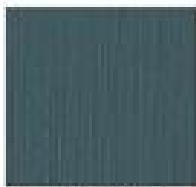
P17 / 5017



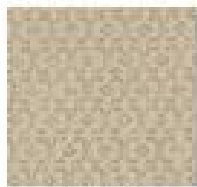
P18 / 5018



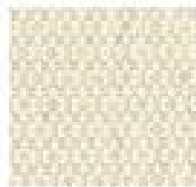
P19 / 5019



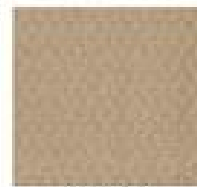
P20 / 5020



P21 / 5021



P22 / 5022



P23 / 5023



P24 / 5024



P25 / 5025



P26 / 5026



P27 / 5027



P28 / 5028



P29 / 5029



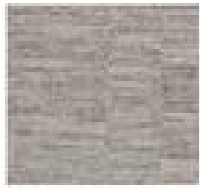
P30 / 5030



P31 / 5031

# NIDA

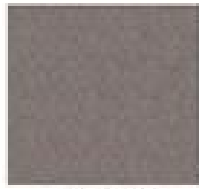
# NIDA



P32 / 5032



P33 / 5033



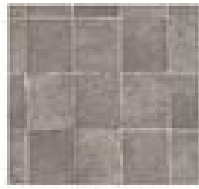
P34 / 5034



P35 / 5035



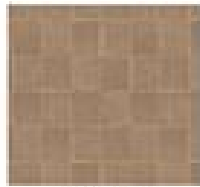
P36 / 5036



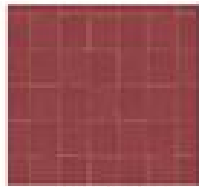
P37 / 5037



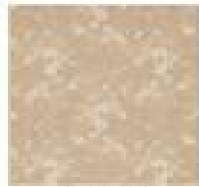
P38 / 5038



P39 / 5039



P40 / 5040



P41 / 5041



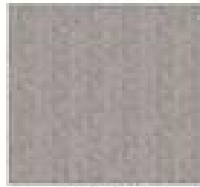
P42 / 5042



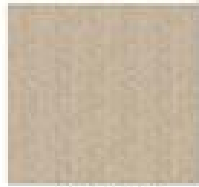
P43 / 5043



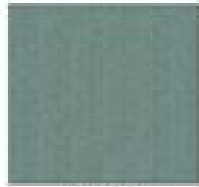
P44 / 5044



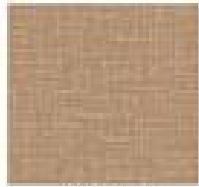
P45 / 5045



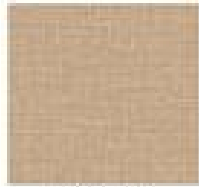
P46 / 5046



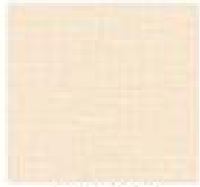
P47 / 5047



P48 / 5048



P49 / 5049



P50 / 5050



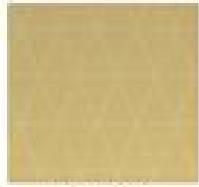
P51 / 5051



P52 / 5052



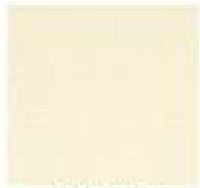
P53 / 5053



P54 / 5054



P55 / 5055



P56 / 5056



P57 / 5057



P58 / 5058



P59 / 5059



P60 / 5060



P61 / 5061



P62 / 5062

# NIDA

# NIDA



NIDA



**NIDA PG01 5001**



**NIDA**

**PG02 5002**





**NIDA**

**PG03-5003**



**NIDA**

**PG04 5004**



**NIDA** PG05 5005



**NIDA**

**PG06 5006**



NIDA



NIDA



**NIDA**

**PG07 5007**



**NIDA**

**PG08 5008**





**NIDA**

**PG09 5009**

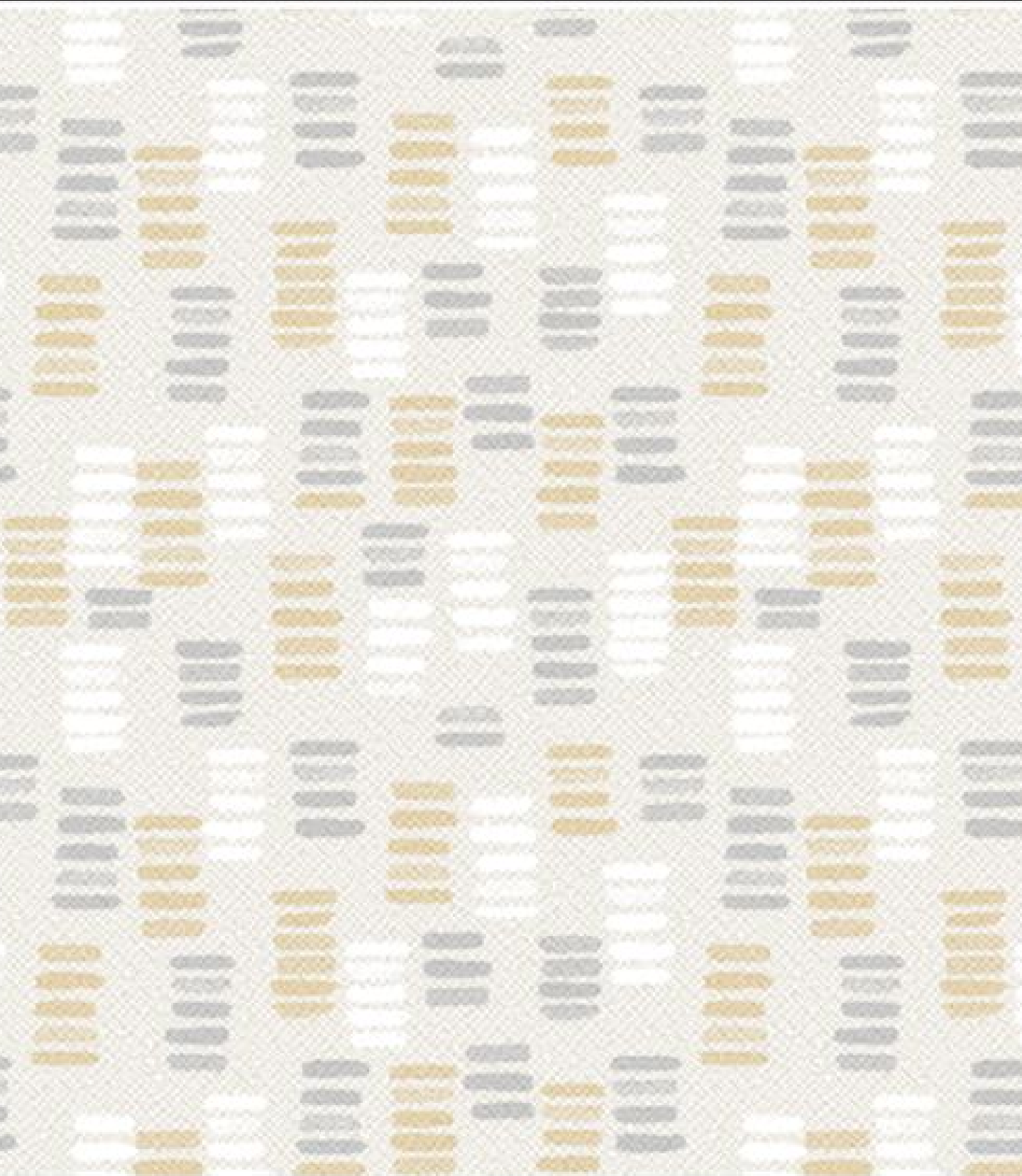


**NIDA** PG10-5010



NIDA

PG11 5011



NIDA

PG12 5012



NIDA



NIDA



**NIDA** PG13 5013



**NIDA**

**PG14 5014**





**NIDA** PG15 5015



NIDA PG16 5016

**NIDA** PG17 5017



**NIDA PG18 5018**

**NIDA** PG19 5019

**NIDA PG20 5020**



**NIDA** PG21 5021



NIDA

PG22 5022





**NIDA**

**PG23 5023**



NIDA



NIDA



**NIDA**

**PG24 5024**



**NIDA**

**PG25 5025**



**NIDA**

**PG26 5026**



**NIDA**

**PG27 5027**



**NIDA**

**PG28 5028**





**NIDA** PG29 5029



**NIDA** PG30 5030

NIDA PG31 5031



**NIDA** PG32 5032



NIDA

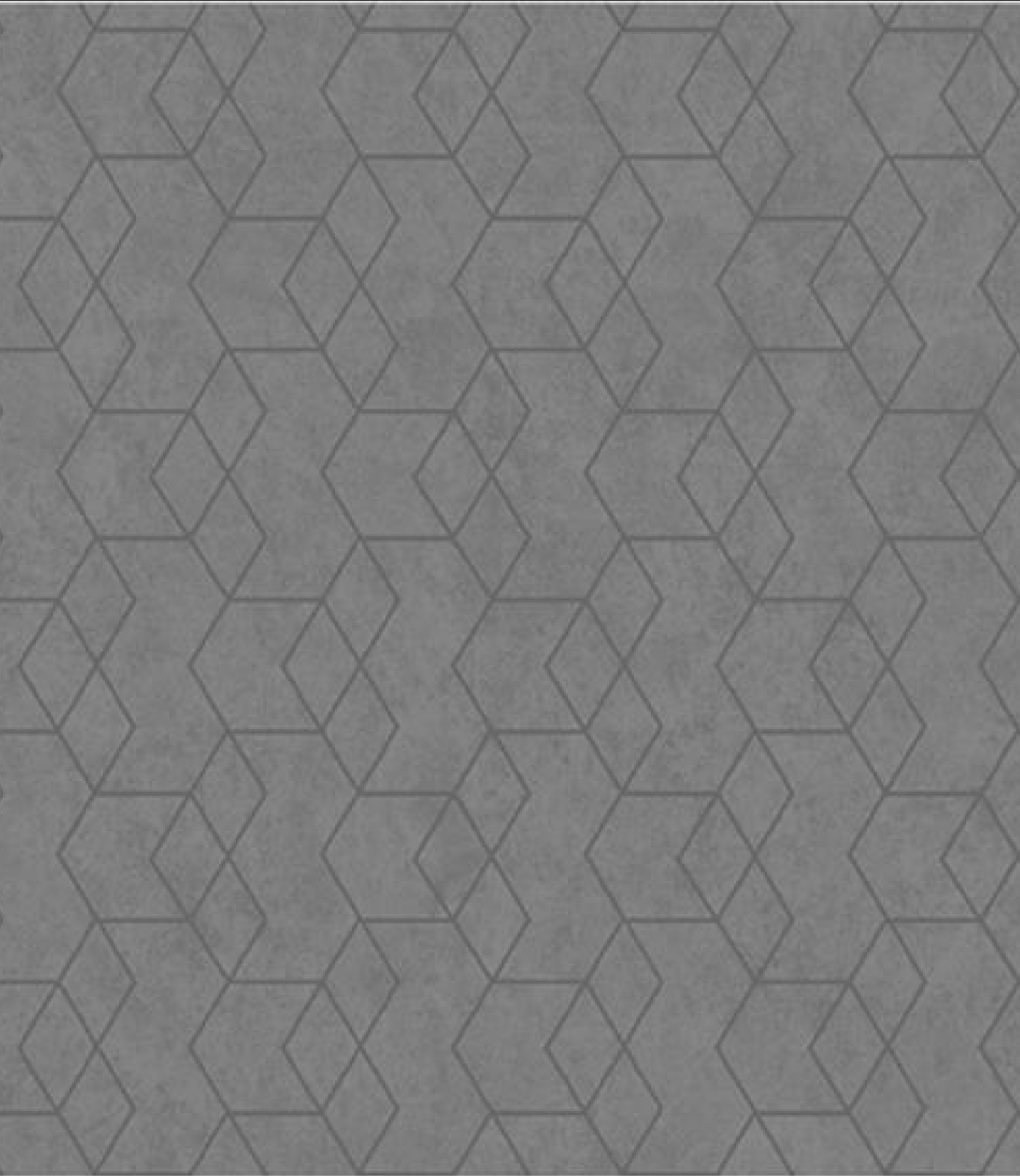


NIDA



**NIDA**

**PG33 5033**



**NIDA** PG34 5034





**NIDA**

**PG35 5035**



**NIDA**

**PG36 5036**



**NIDA**

**PG37 5037**



**NIDA**

**PG38 5038**



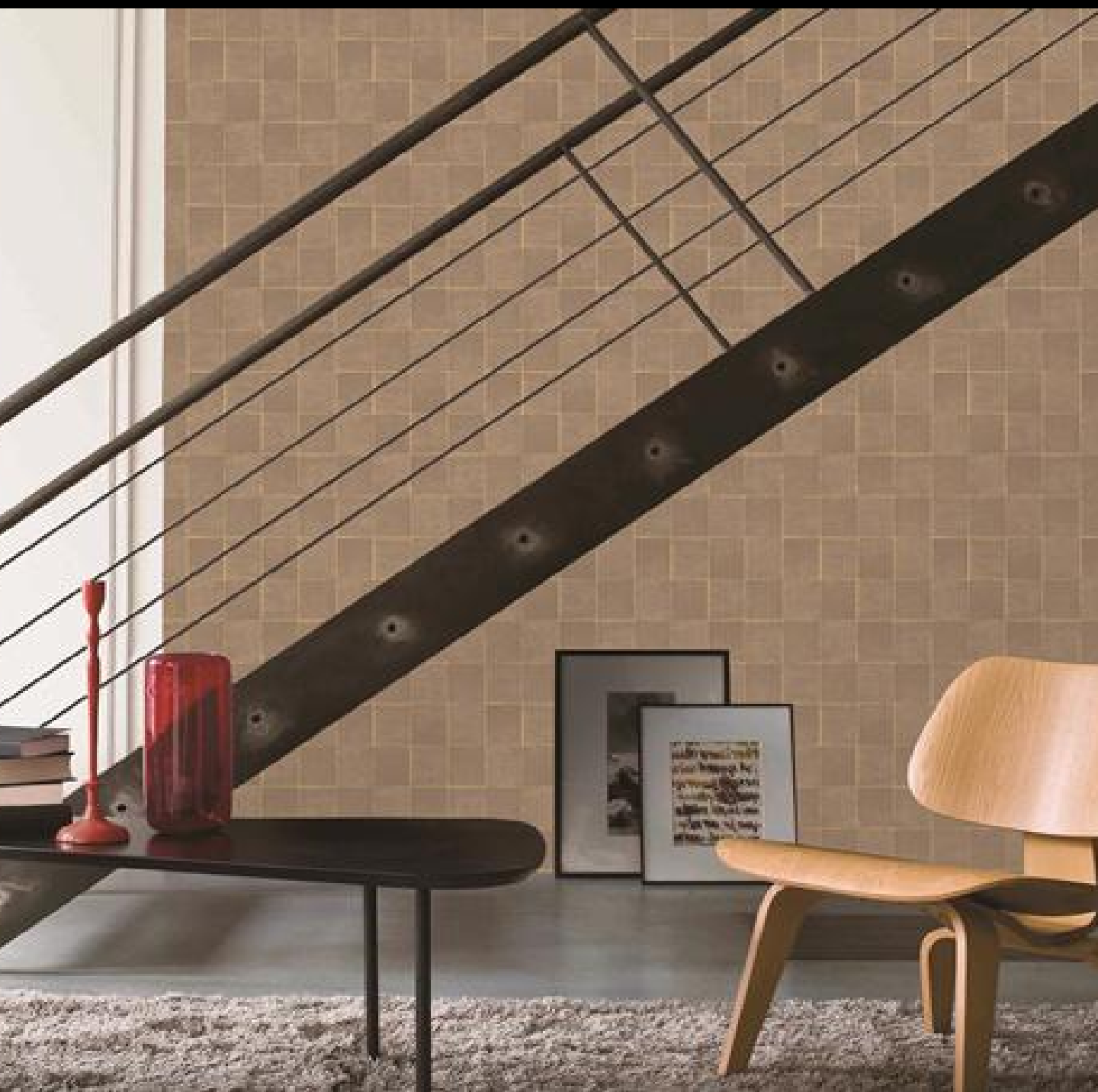
**NIDA**

**PG39 5039**



**NIDA**

**PG40 5040**



NIDA



NIDA





**NIDA**

**PG41 5041**



**NIDA**

**PG42 5042**



NIDA

PG43 5043



**NIDA** PG44 5044



**NIDA**

**PG45 5045**



**NIDA** PG46 5046



**NIDA** PG47 5047



NIDA





NIDA

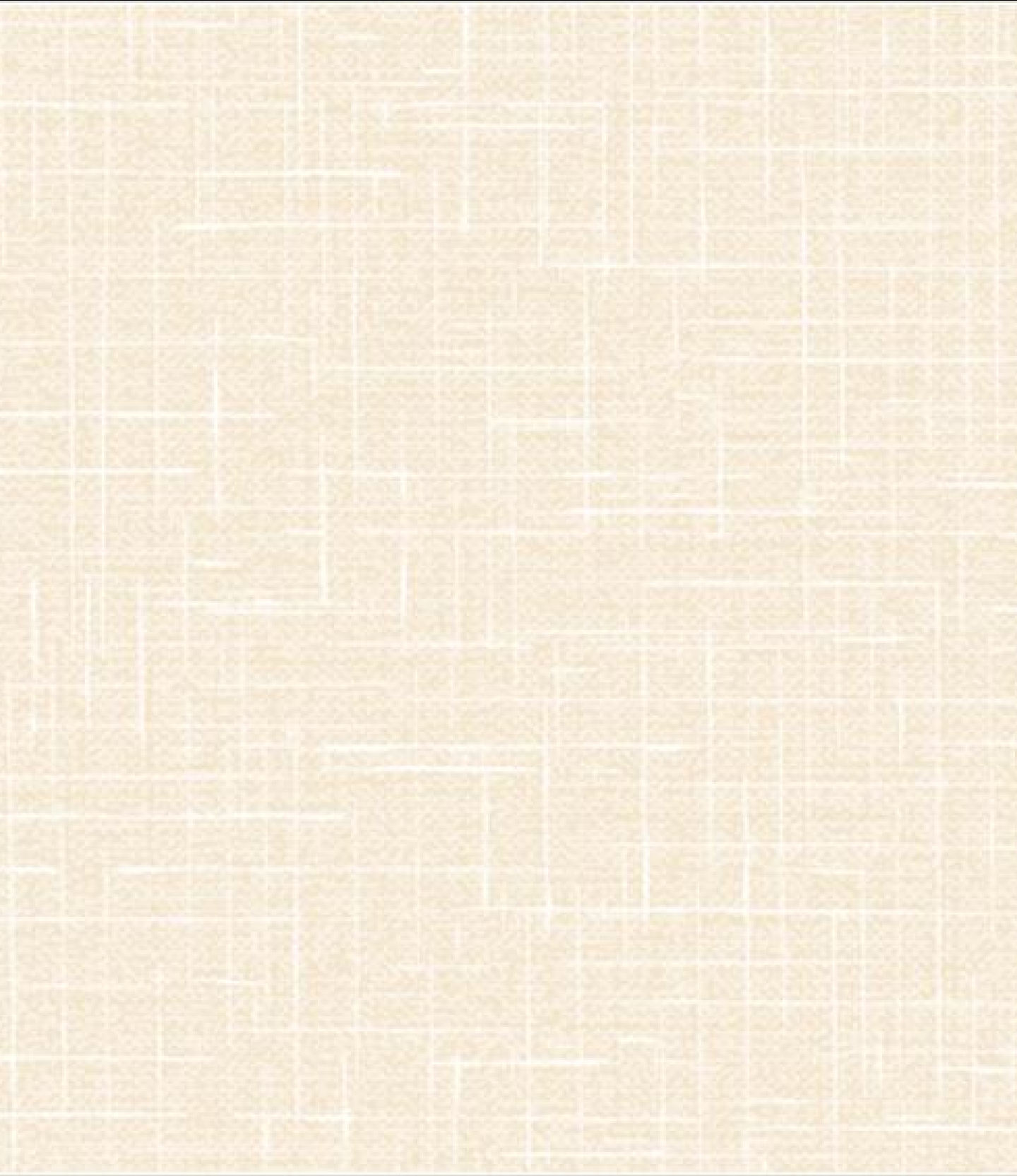


**NIDA**

**PG48 5048**



**NIDA** PG49 5049



**NIDA**

**PG50 5050**



**NIDA** PG51 5051



**NIDA**

**PG52 5052**



**NIDA**

**PG53 5053**



NIDA





NIDA



**NIDA** PG54 5054



**NIDA**

**PG55 5055**

**NIDA** PG56 5056

**NIDA PG57 5057**

**NIDA** PG58 5058

NIDA PG59 5059



NIDA





NIDA



**NIDA**

**PG60 5060**



**NIDA**

**PG61 5061**



**NIDA**

**PG62 5062**

# NIDA

PAGE NUMBER	PATTERN NUMBER	PAGE NUMBER	PATTERN NUMBER	PAGE NUMBER	PATTERN NUMBER	PAGE NUMBER	PATTERN NUMBER
01	5001	17	5017	33	5033	49	5049
02	5002	18	5018	34	5034	50	5050
03	5003	19	5019	35	5035	51	5051
04	5004	20	5020	36	5036	52	5052
05	5005	21	5021	37	5037	53	5053
06	5006	22	5022	38	5038	54	5054
07	5007	23	5023	39	5039	55	5055
08	5008	24	5024	40	5040	56	5056
09	5009	25	5025	41	5041	57	5057
10	5010	26	5026	42	5042	58	5058
11	5011	27	5027	43	5043	59	5059
12	5012	28	5028	44	5044	60	5060
13	5013	29	5029	45	5045	61	5061
14	5014	30	5030	46	5046	62	5062
15	5015	31	5031	47	5047		
16	5016	32	5032	48	5048		



- Unroll roll roller up to avoid overstretching
- Center to top of page (for medium)
- Apply joints with roller to the wall
- Do third roll when roller extension
- Apply to cover completely on a panel (see cut table)



- SMART paper stuck up to avoid overstretching
- Place to SMART paper surface
- Apply SMART paper directly to the wall
- SMART paper stuck up to avoid overstretching
- Color in paper (SMART) is a number



- SMART paper to most flexible board
- Check color number
- Cut SMART paper to size
- SMART paper with 100% extension
- Apply to paper (SMART) to paper
- Direction of the panel



- Roll paper into smoothly through a window
- Roll to extend, roll to distance extend
- Simple to remove even jointless
- Attach to cover to uniform, roll each material joint
- Roll to cover entire surface of each panel