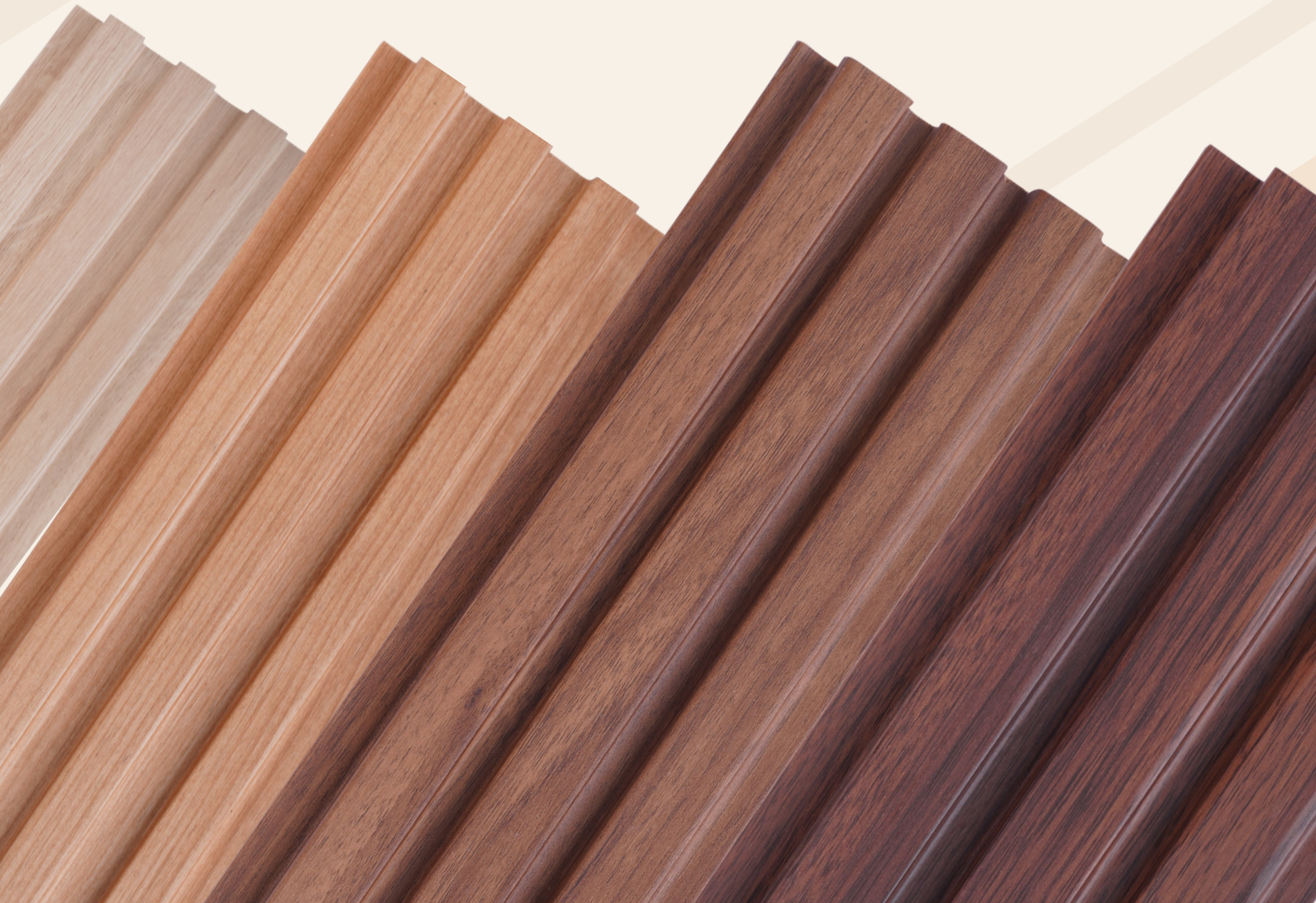


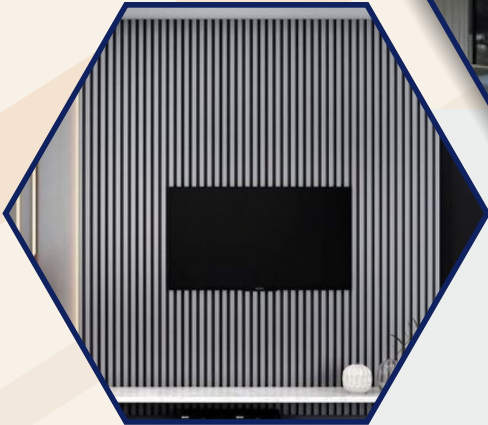


—One For Excellence—

**MANUFACTURERS OF WALL PANELS**



# NEO ONE PANEL



—One For Excellence—



MANUFACTURERS OF WALL PANELS



# APPLICATIONS



**101  
NORDIC WHITE**



# APPLICATIONS



**102**  
**GUN METAL GREY**





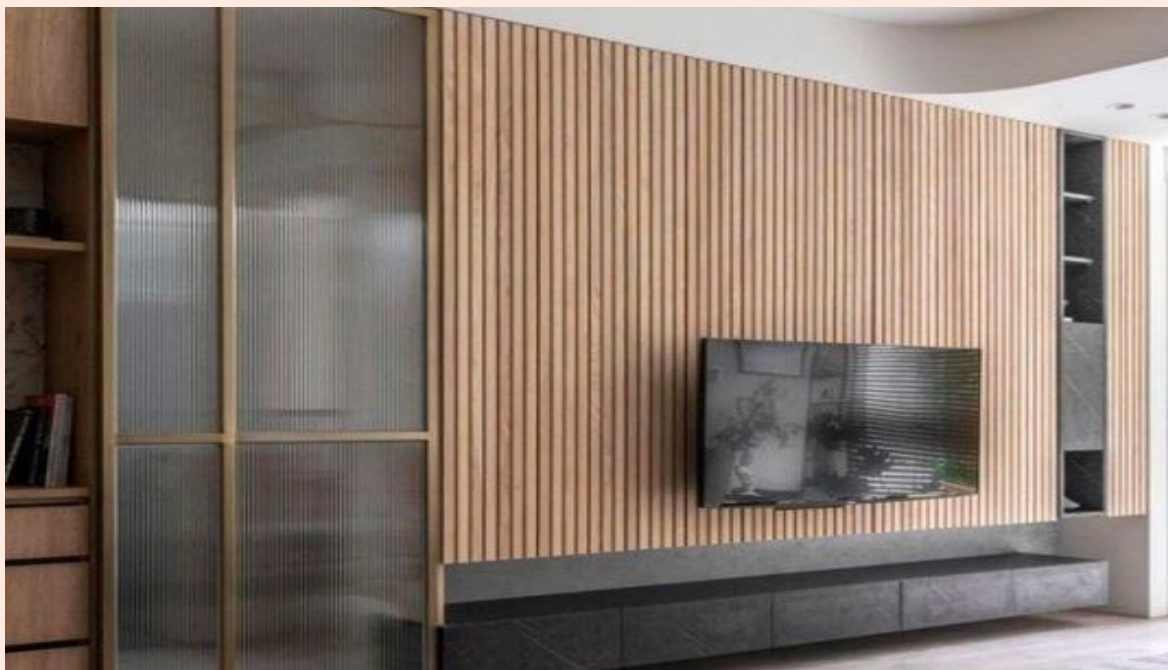
# APPLICATIONS



**201  
NORDIC OAK**



# APPLICATIONS



**202**  
**BURMA TEAK**





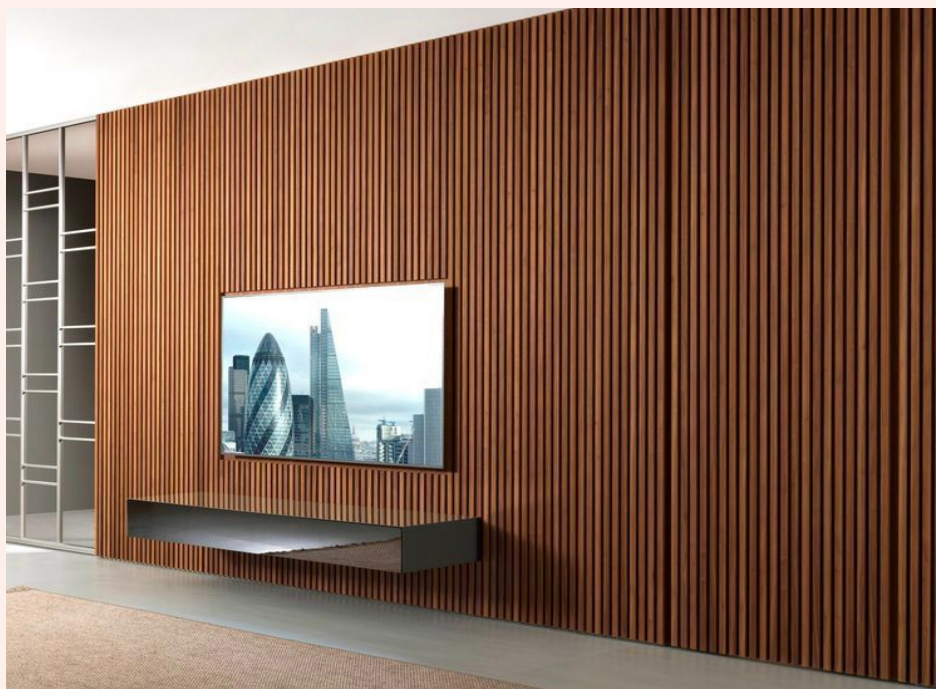
# APPLICATIONS



**203**  
**EUROPEAN WALNUT**



# APPLICATIONS



**204  
SANTOS**





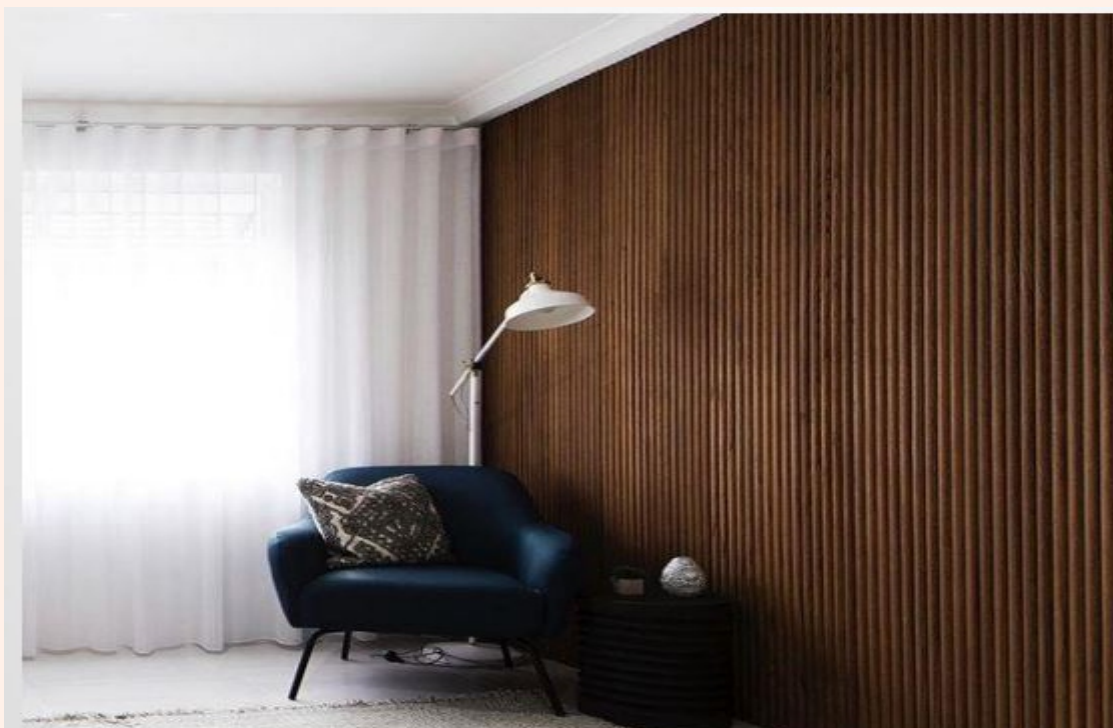
# APPLICATIONS



**205**  
**FRENCH WALNUT**



# APPLICATIONS

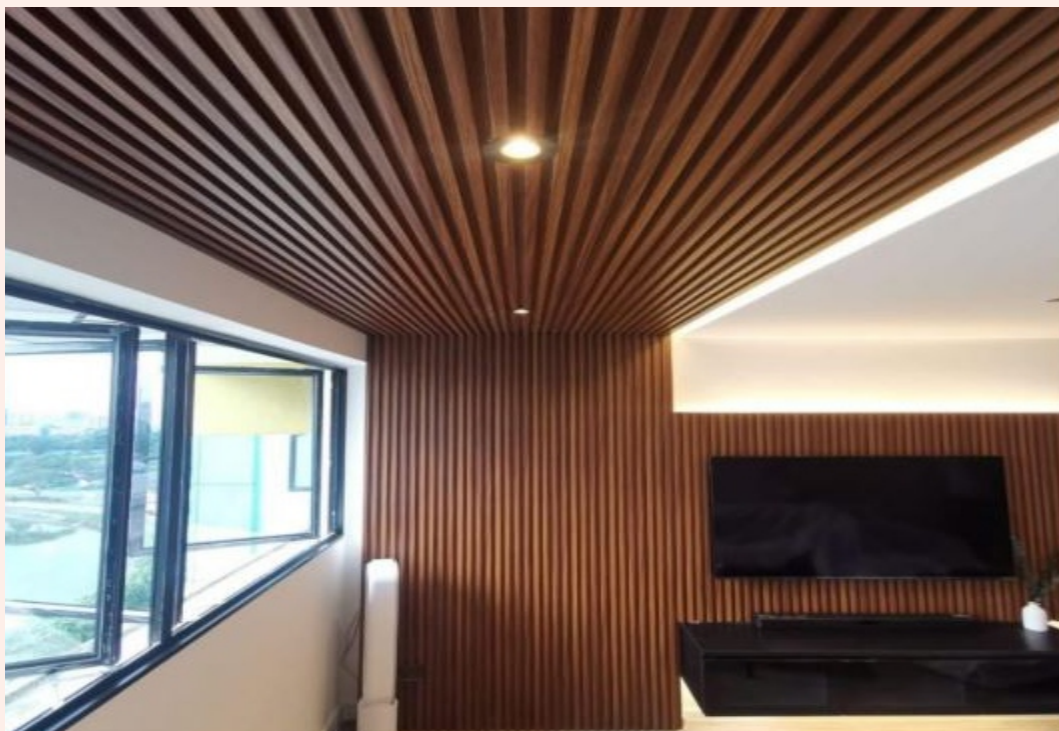


**206**  
**NATURAL WALNUT**

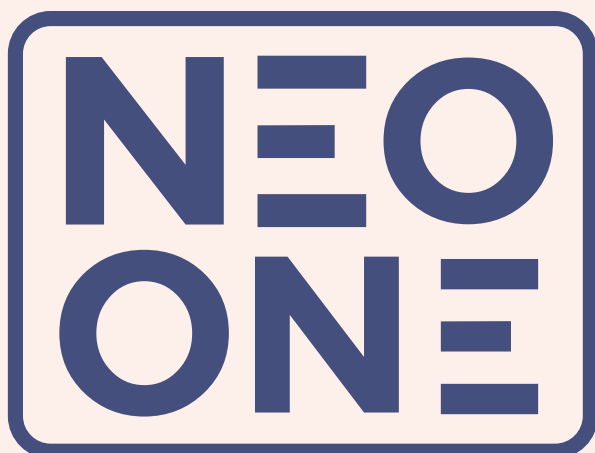




## APPLICATIONS



**207**  
**FUMED WALNUT**



# APPLICATIONS



**208  
POMELLE**





# APPLICATIONS



**209**  
**AMERICAN WHITE OAK**



# APPLICATIONS



## 301 ALASKAN WHITE WAVES



# APPLICATIONS



**302**  
**METALLIC ASH**

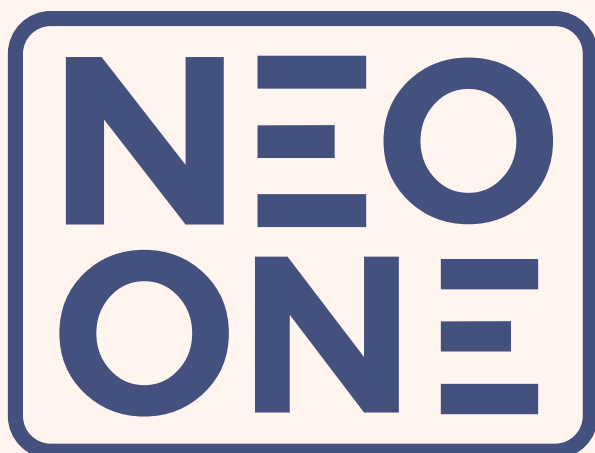




## APPLICATIONS



**303  
CEREJIA**



# APPLICATIONS



**304  
FUMED OAK**



## APPLICATIONS

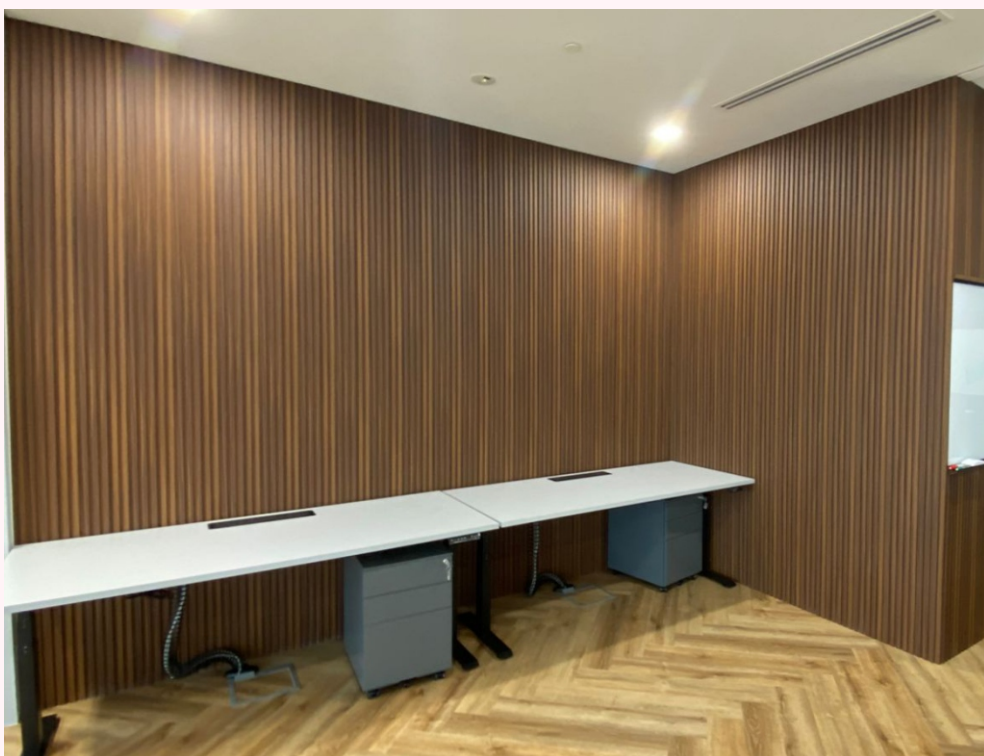


### **305 METALLIC SAPELLI**





# APPLICATIONS



**306  
OPEN POUR OAK**



# APPLICATIONS



**307**  
**SILVER OAK**



# APPLICATIONS



**308  
FUMED LARCH**





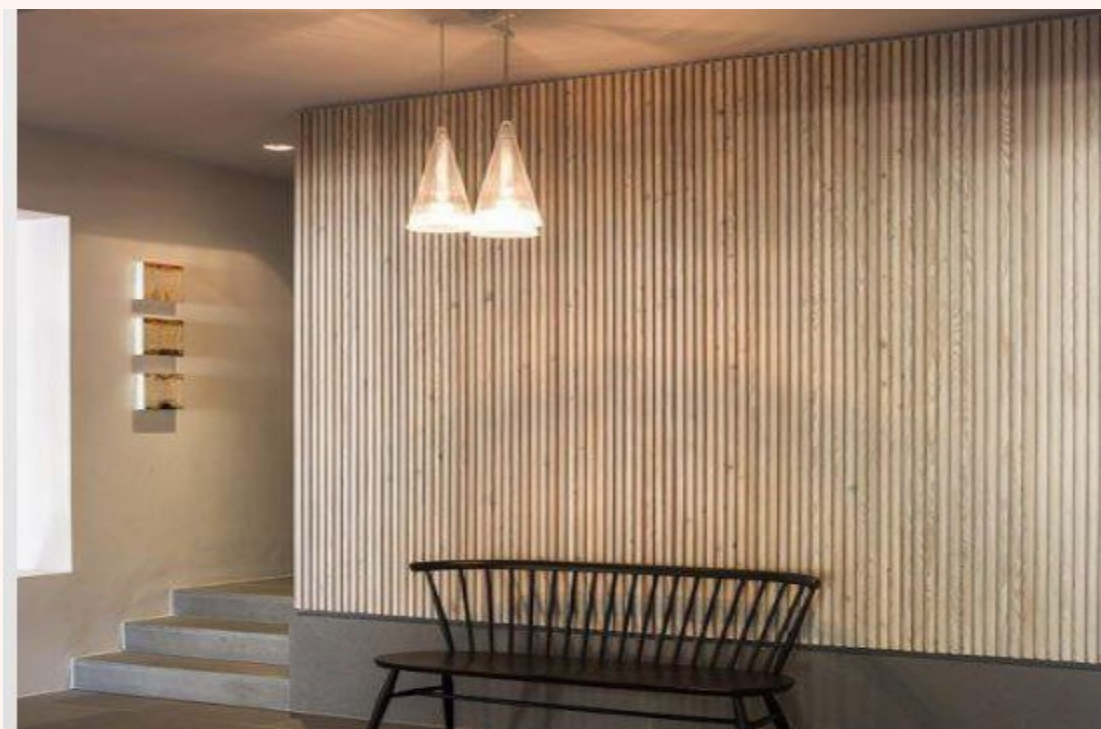
# APPLICATIONS



**309**  
**QUARTER BAMBOO**



# APPLICATIONS



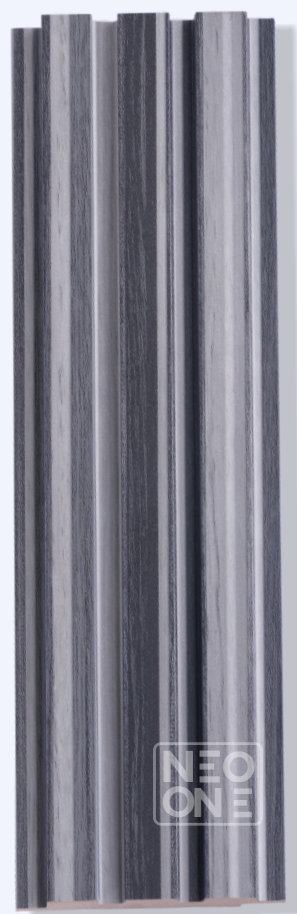
**310  
SUNSHINE ASH**



# APPLICATIONS



**401**  
**ZEBRA WOOD**

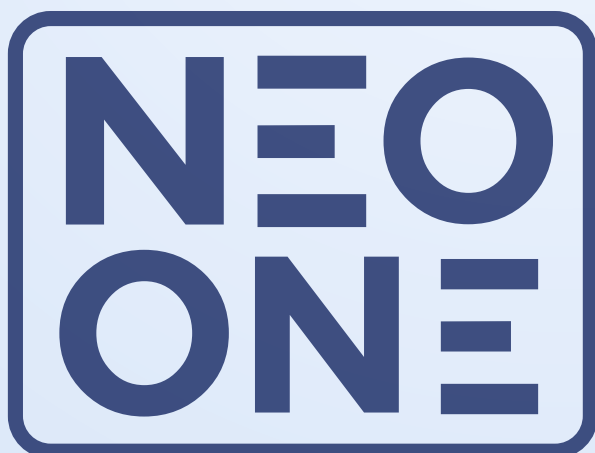




# APPLICATIONS



**402**  
**CARBON FIBRE**





## **BENEFITS OF OUR MDF PANELS**



**BASE MATERIAL  
NOT PVC NOR  
CHARCOAL**

**FINISHED  
PRODUCT**

**EASY TO INSTALL**

**COST EFFICIENT**

**NO NEED TO  
PAINT OR POLISH**

**SMOOTH AND  
TEXTURED  
FINISH**

**TIME EFFICIENT**





## **TECHNICAL SPECIFICATIONS**

**BASE PRODUCT**

**:**

**MEDIUM DENSITY  
FIBREBOARD**

**TOP LAYER  
MEMBRANE**

**:**

**TEXTURED PVC**

**HEIGHT**

**:**

**2400 MM / 3000 MM**

**WIDTH**

**:**

**120 MM**

**THICKNESS**

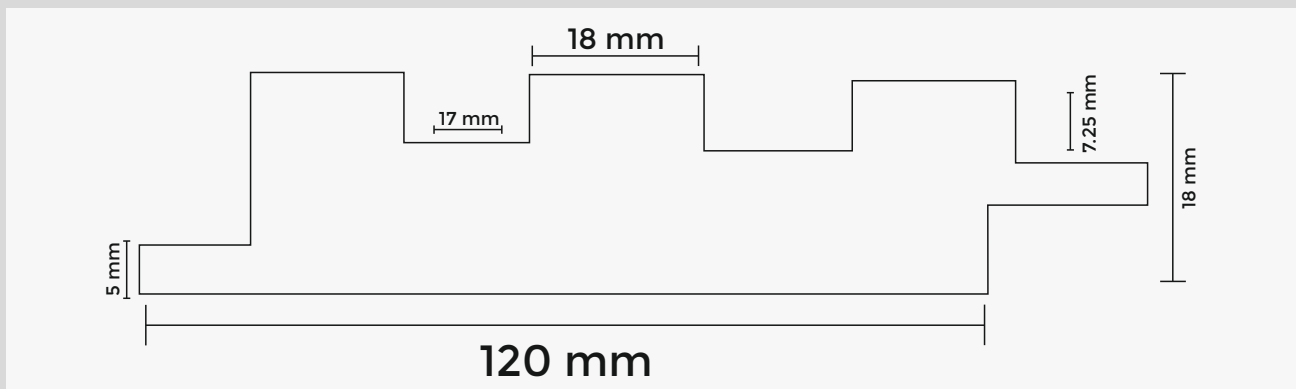
**:**

**18 MM**

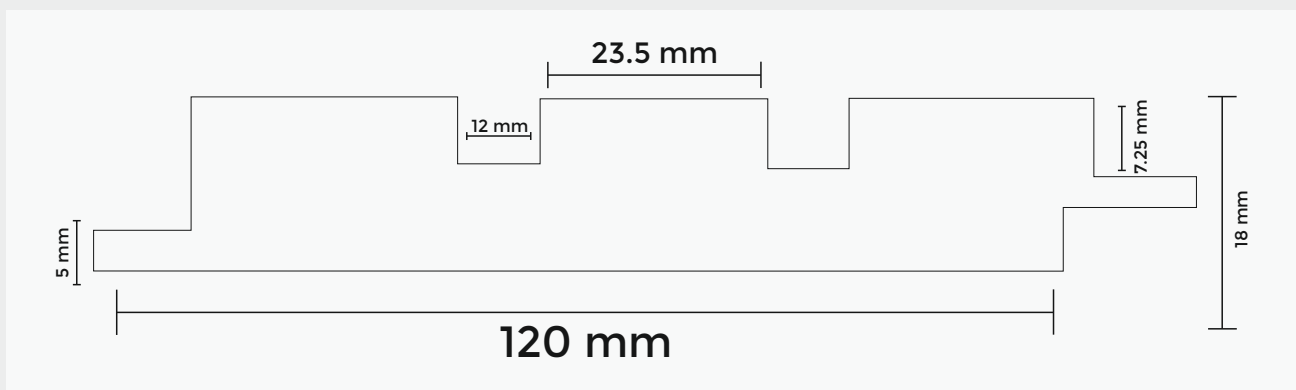
**NOW ALSO AVAILABLE IN 10 FT (3000 MM)**



## ► TYPES OF PANELS



**P - 11**

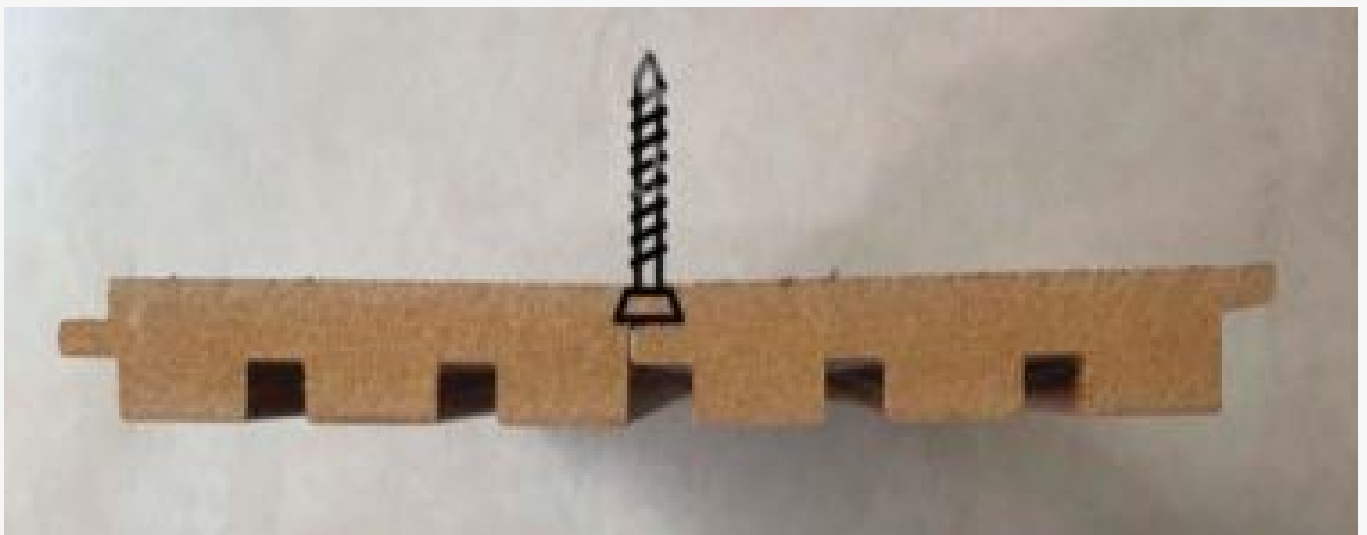


**P - 22**

**ALL COLOURS WILL BE AVAILABLE IN BOTH THE PROFILES**

## ▶ INSTALLATION

- ▶ Panel the wall with either aluminium channels or plywood as the base
- ▶ Fixing the panel: Drill screws on the lower side of the 1st panel at intermitted distance
- ▶ Overlap the upper side of the 2nd panel on the 1st panel
- ▶ Again drill the screws on the lower side of the 2nd panel
- ▶ As we repeat the process, screws are hidden & we achieve perfectly consistent panelling



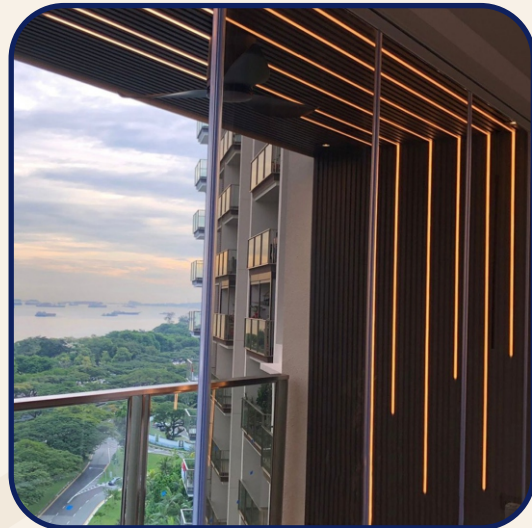


## APPLICATION IDEAS

Fluted Table



Fluted Wall Lights



Balcony Area



False Ceiling



## APPLICATION IDEAS

Fluted T.V. Unit



Fluted Door



Lift / Lobby Area



Fluted Pillar