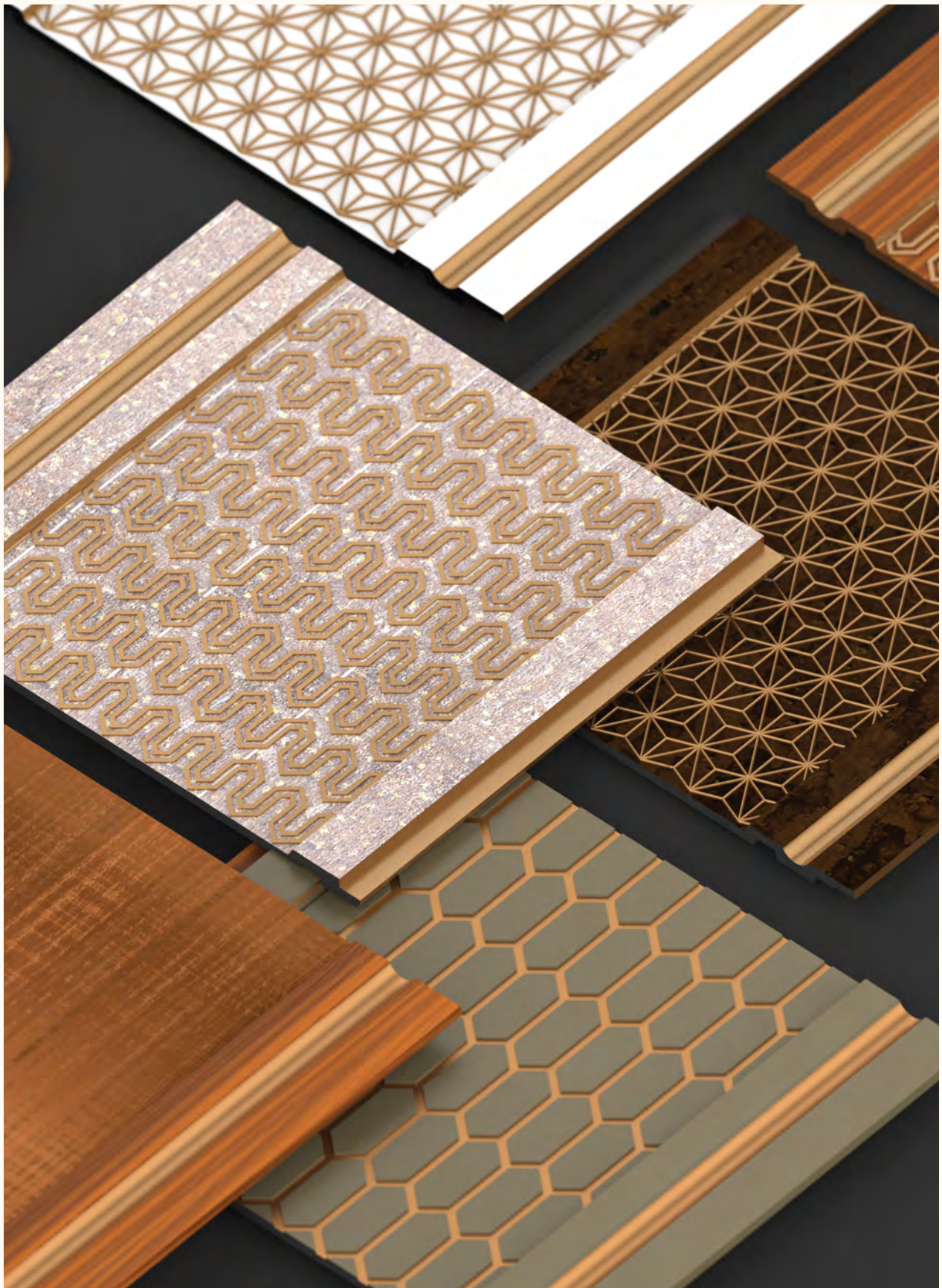


# DECOLUX

by **vivre** PANELS



# INDEX



— VX3007



— VX3024



— VX3008



— VX3006



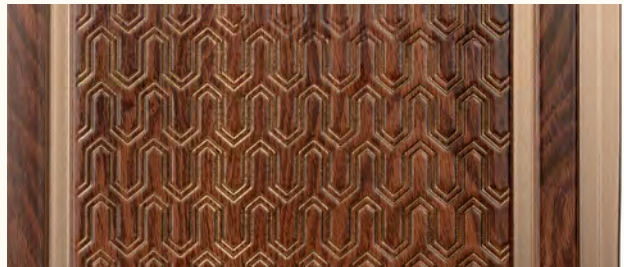
— VX3009



— VX3004



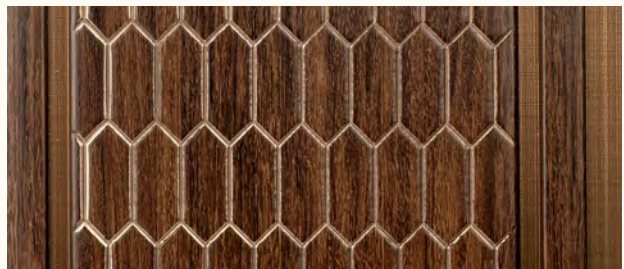
— VX3017



— VX3005



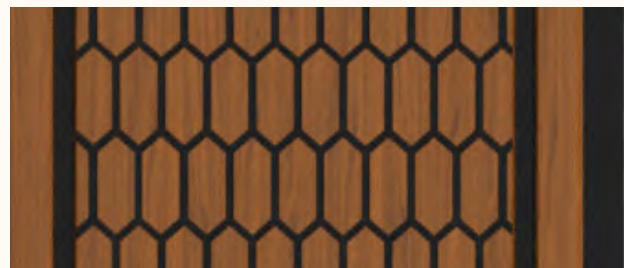
— VX3018



— VX3013



— VX3023



— VX3014

# INDEX



— VX3016



— VX3020



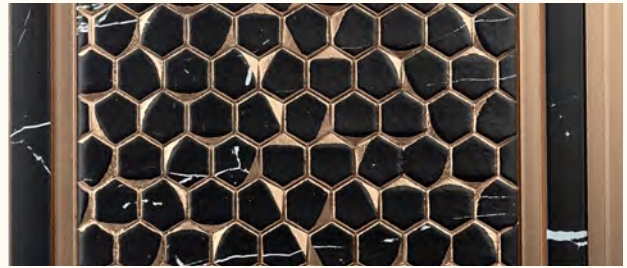
— VX3015



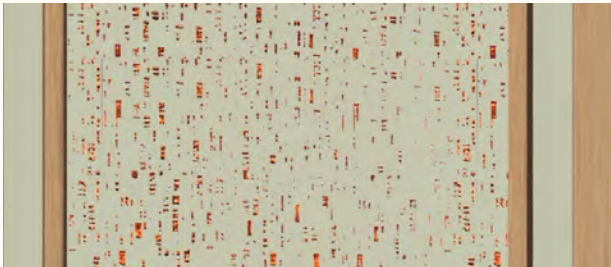
— VX3021



— VX3010



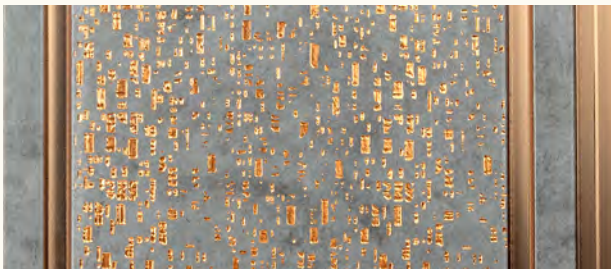
— VX3022



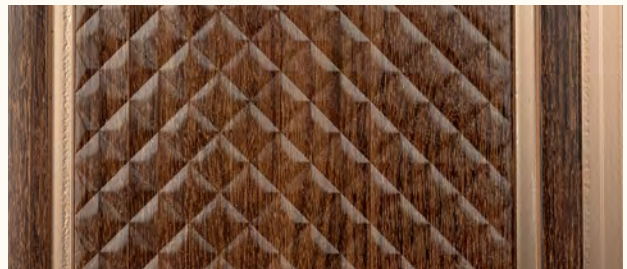
— VX3012



— VX3002



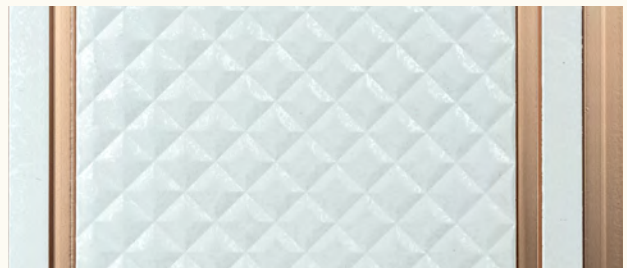
— VX3011



— VX3001



— VX3019



— VX3003

# 24

## NEW DESIGNS

Sizes:

**8 ft x 210 mm**

---

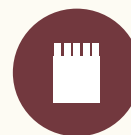
Introducing DecoLux, a paradigm shift in interior panels, where the essence of seamless design converges with the enchanting allure of three-dimensional tactility. Crafted to empower your design narratives in spaces that inspire.



Wider  
Width



Quick  
Installation



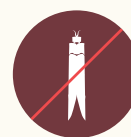
Less Wastage  
On Overlapping



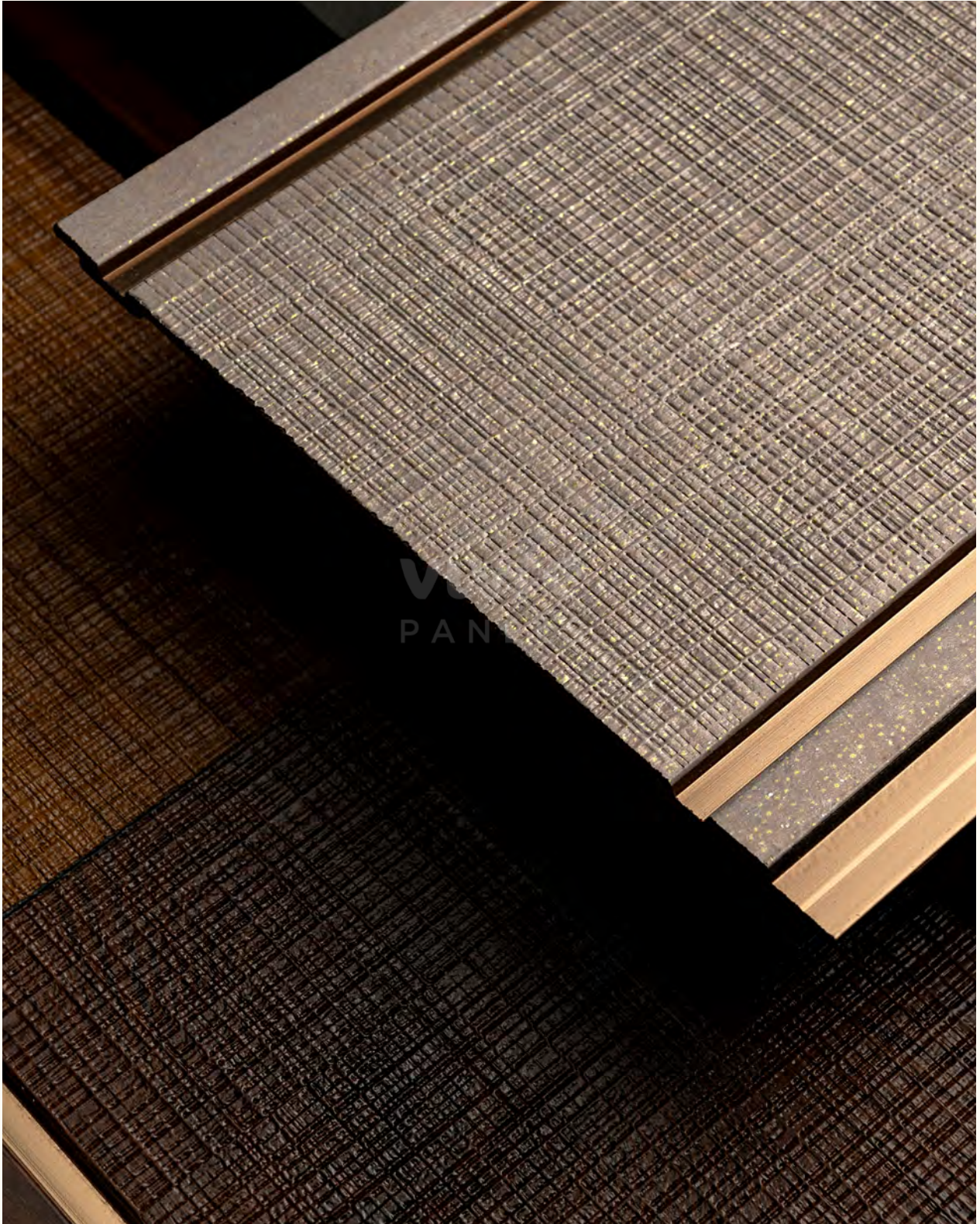
Water  
Resistant



Termite  
Resistant



Borer  
Resistant



## ROUGH CUT

---

Embrace nature's raw allure through our Rough Cut collection. Each panel conveys rugged elegance, bringing untamed beauty to interior spaces.



Design Code

**VX3007**





Design Code

**VX3008**



Design Code

**VX3009**





## STAR

---

Elevate design narratives with the Star Pattern collection. Panels weave lines and angles, creating captivating forms that transform walls into dynamic works of art.



Design Code

**VX3017**



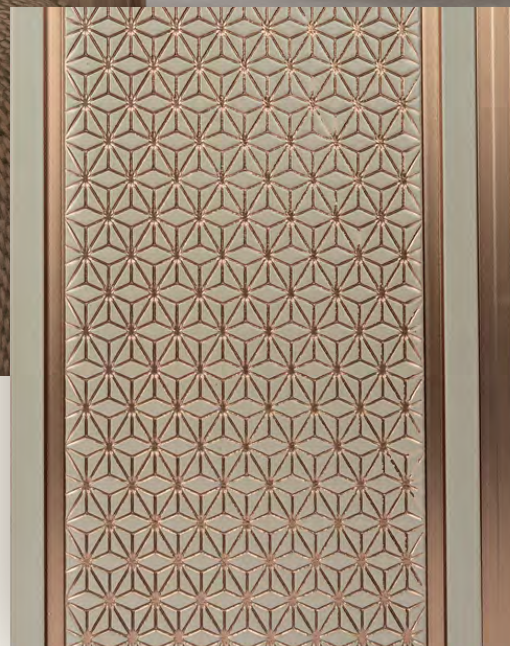
Design Code

**VX3018**



Design Code

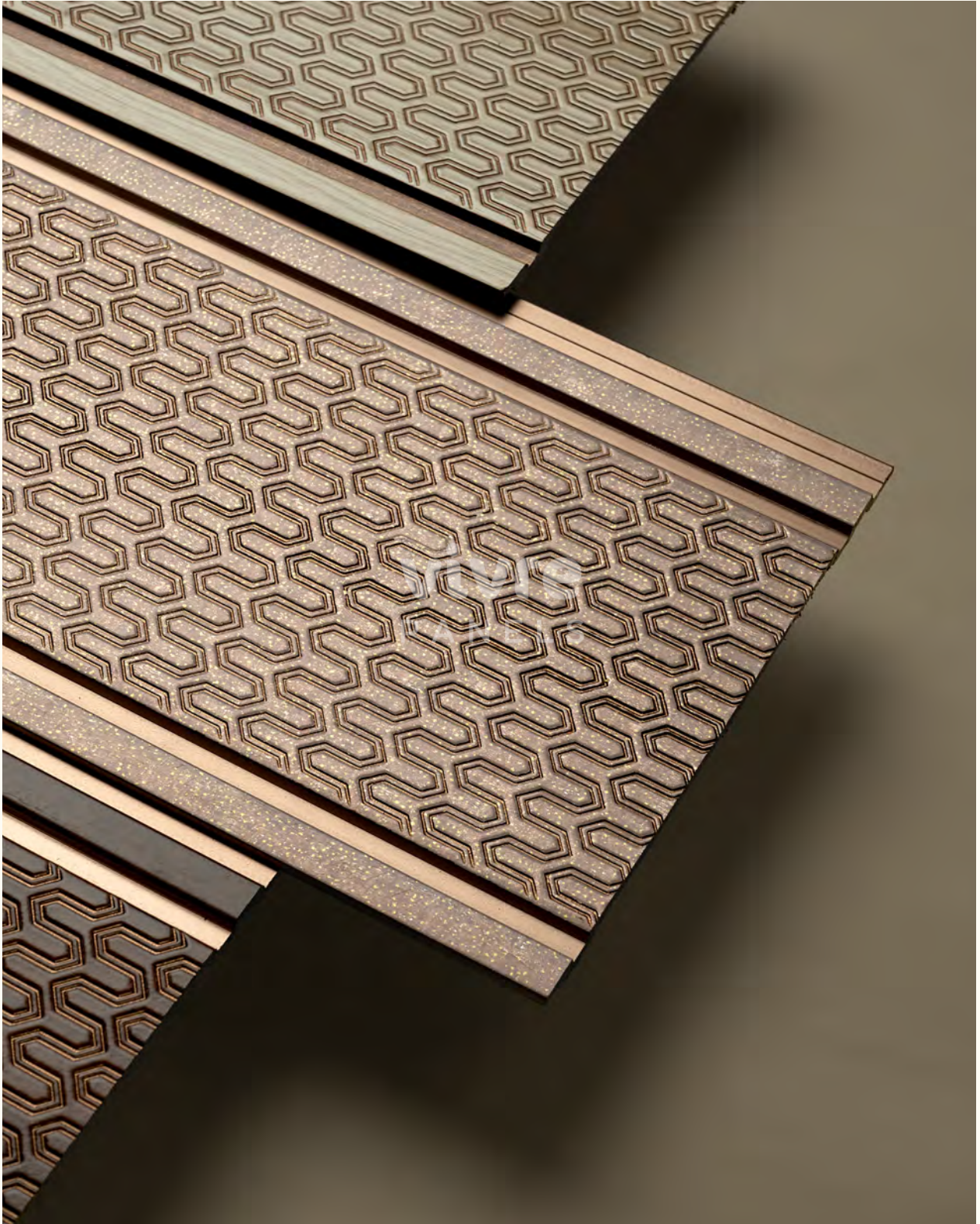
**VX3023**





Design Code

**VX3024**



## UV

---

Presenting the UV collection, where U and V fusion blends form and function harmoniously. Panels celebrate design and innovation, introducing contemporary essence to interiors.



Design Code

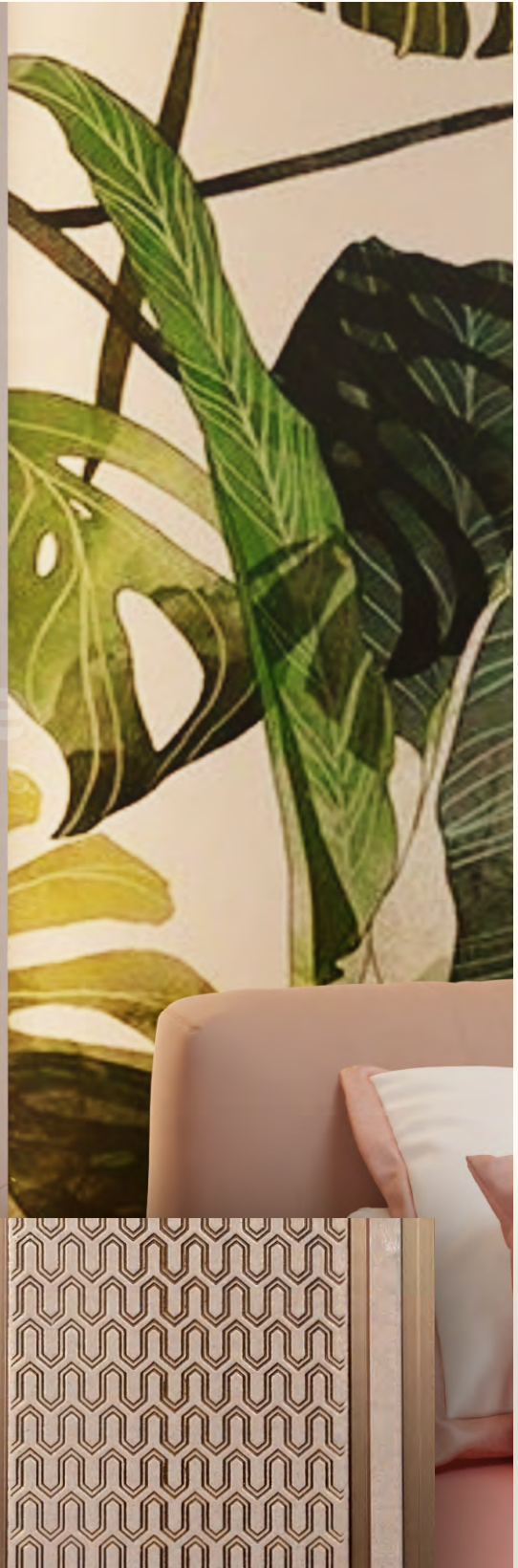
**VX3005**



Design Code

**VX3004**





Design Code

**VX3006**



## HEXAGON

---

Immerse in captivating geometry with the Hexagon collection. Walls become canvases for rhythmic interconnected shapes, infusing spaces with refined sophistication.



Design Code

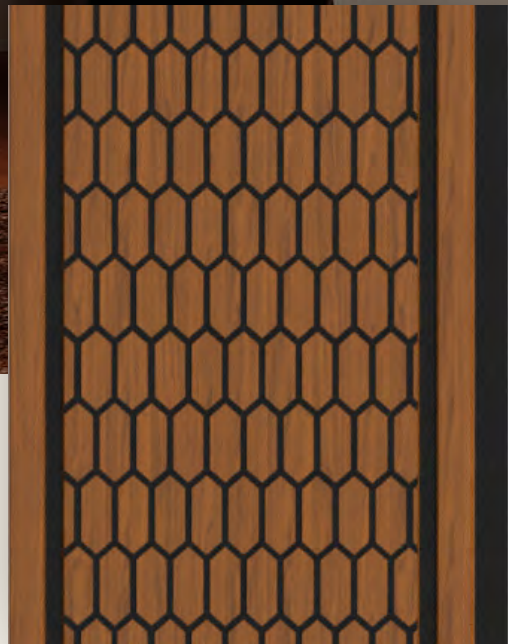
**VX3013**





Design Code

**VX3014**





Design Code

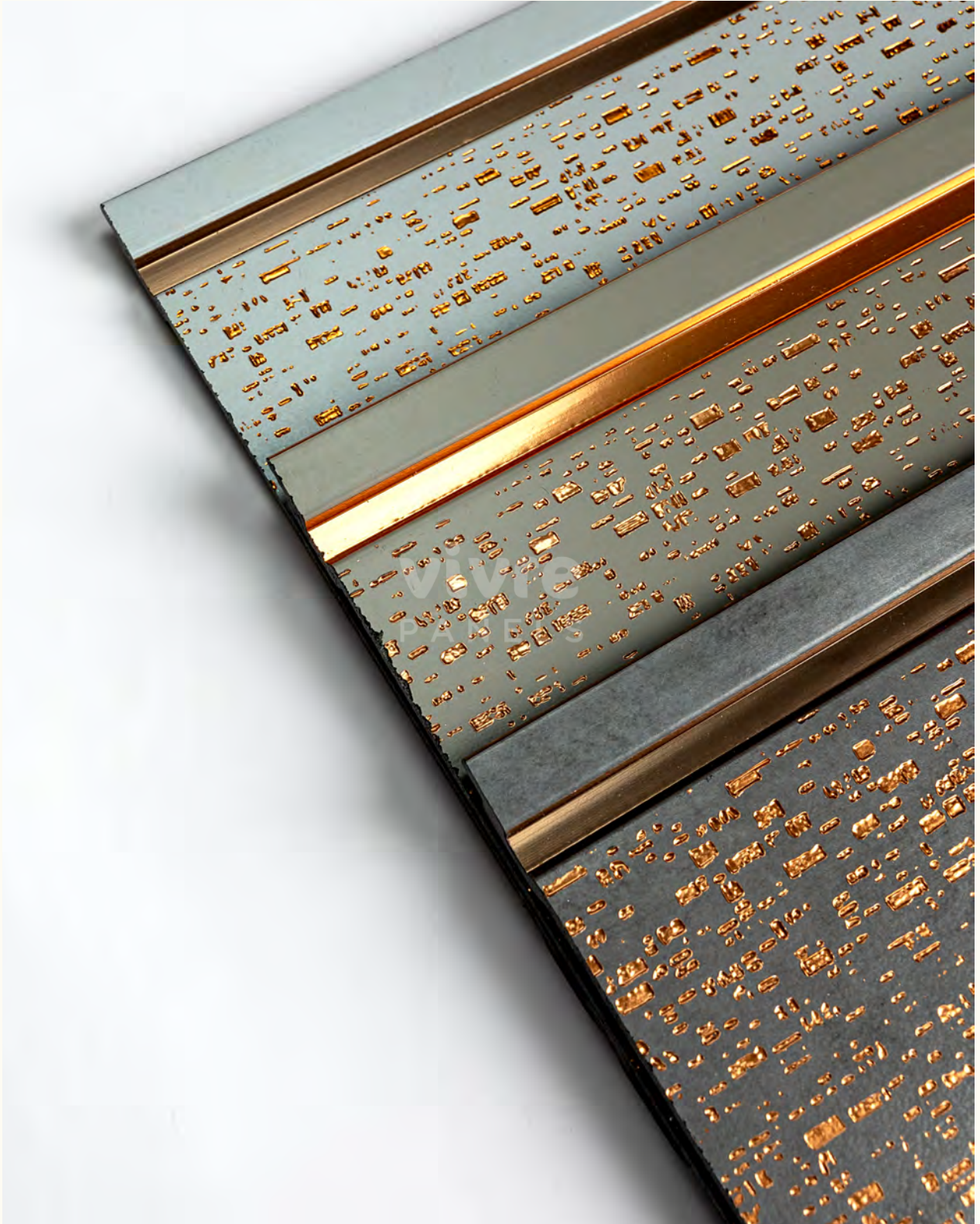
**VX3016**



Design Code

**VX3015**





## SHIMMER

---

Illuminate interiors with the Shimmer collection, celebrating the enchanting play of light. Panels choreograph sparkle and shine, infusing spaces with an ethereal sense of wonder.



Design Code

**VX3010**





Design Code

**VX3012**



Design Code

**VX3011**



## OCTA

---

Introducing the Octa collection, redefining aesthetics as eight sides converge. Intricate angles create an environment radiating modern opulence.



Design Code

**VX3019**



Design Code

**VX3020**



Design Code

**VX3021**



Design Code

**VX3022**



## DIAMOND

---

Unveil timeless allure through the Diamond collection's 3D embossing. Panels orchestrate light and shadow interplay, adding depth and dimension with refined glamour.





Design Code

**VX3002**



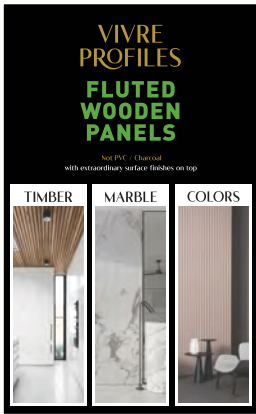
Design Code

**VX3001**



Design Code

**VX3003**



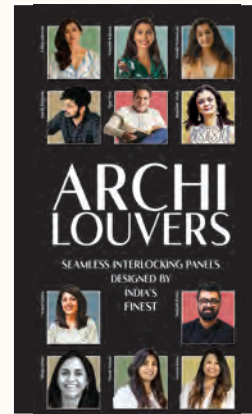
Scan for Digital Catalogue

VIVRE PROFILES:  
WOOD-BASED ARCHITECTURAL  
CLADS FOR INTERIORS



Scan for Digital Catalogue

VIVRE WOODCLAD:  
WPC BASED EXTERIOR CLADDING  
FOR EXTERIORS & INTERIORS



Scan for Digital Catalogue

ARCHILOUVERS:  
CUSTOM DESIGNED PS PANELS  
FOR INTERIORS



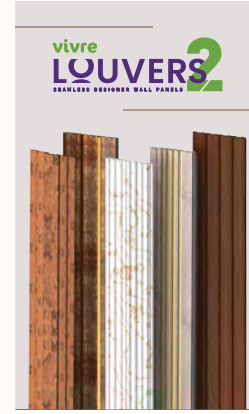
Scan for Digital Catalogue

VIVRECLAD:  
COMPOSITE LOUVERS  
& SIDING BOARDS FOR  
EXTERIORS & INTERIORS



Scan for Digital Catalogue

VIVRE WALL MOULDINGS:  
FOR ACCENT WALLS



Scan for Digital Catalogue

VIVRE LOUVERS:  
PS BASED  
INTERIOR PANELS

## vivres PANELS

|  |  |   |  |   |
|--|--|---|--|---|
| <p><b>vivrepans</b></p> <p><a href="http://vivrepans.com">vivrepans.com</a></p> <p><a href="mailto:info@vivrepans.com">info@vivrepans.com</a></p> <p>Vivres Panels Pvt Ltd</p> | <p><b>PLYWOOD &amp; BOARDS</b></p> <p>TEAK PLYWOOD</p> <p>FLEXI PLYWOOD</p> <p>ORIENTED STRAND BOARD (OSB)</p> <p>FINGER JOINT BOARD</p> <p>RUSSIAN BIRCH PLWOOD</p> <p>GURJAN PLYWOOD</p> | <p><b>PVC</b></p> <p>PVC BOARD</p> <p>PVC DOORS</p> | <p><b>VENEERS</b></p> <p>TEAK VENEERS</p> <p>RECON VENEERS</p> <p>DECORATIVE VENEERS</p> | <p><b>VIVRE DECOR</b></p> <p>VIVRE ALUCLAD: ACP-BASED LOUVERS &amp; SIDING BOARDS</p> <p>VIVRE WOODCLAD: WPC EXTERIOR CLADDING</p> <p>VIVRE ARCHILOUVERS</p> <p>VIVRE LOUVERS</p> <p>VIVRE PROFILES</p> |
|--|--|---|--|---|

Vivres products add natural beauty to your spaces. Color variance, weave irregularities and shading in these products are to enhance natural beauty and are not imperfections. Utmost care has been taken to provide accurate descriptions and technical specifications. Please excuse errors and omissions, if any. No guarantee / warranty of the product after installation (dimension tolerance +/- 5-10%). Technical specifications and products are subject to change without prior intimation. Use same batch material to avoid color variations. Vivres confirms that all products are free from manufacturing defects and perfectly fit for use in normal conditions.