

**CUBE**  
COLLECTION

**200X200MM**

MATT &  
MATT WITH LUSTER

**THE  
ART  
OF  
LUSTER**

**SUBWAY**  
TILES™

endless possibilities

[www.subwaytiles.in](http://www.subwaytiles.in)

sfumato india pvt. ltd. June 2022

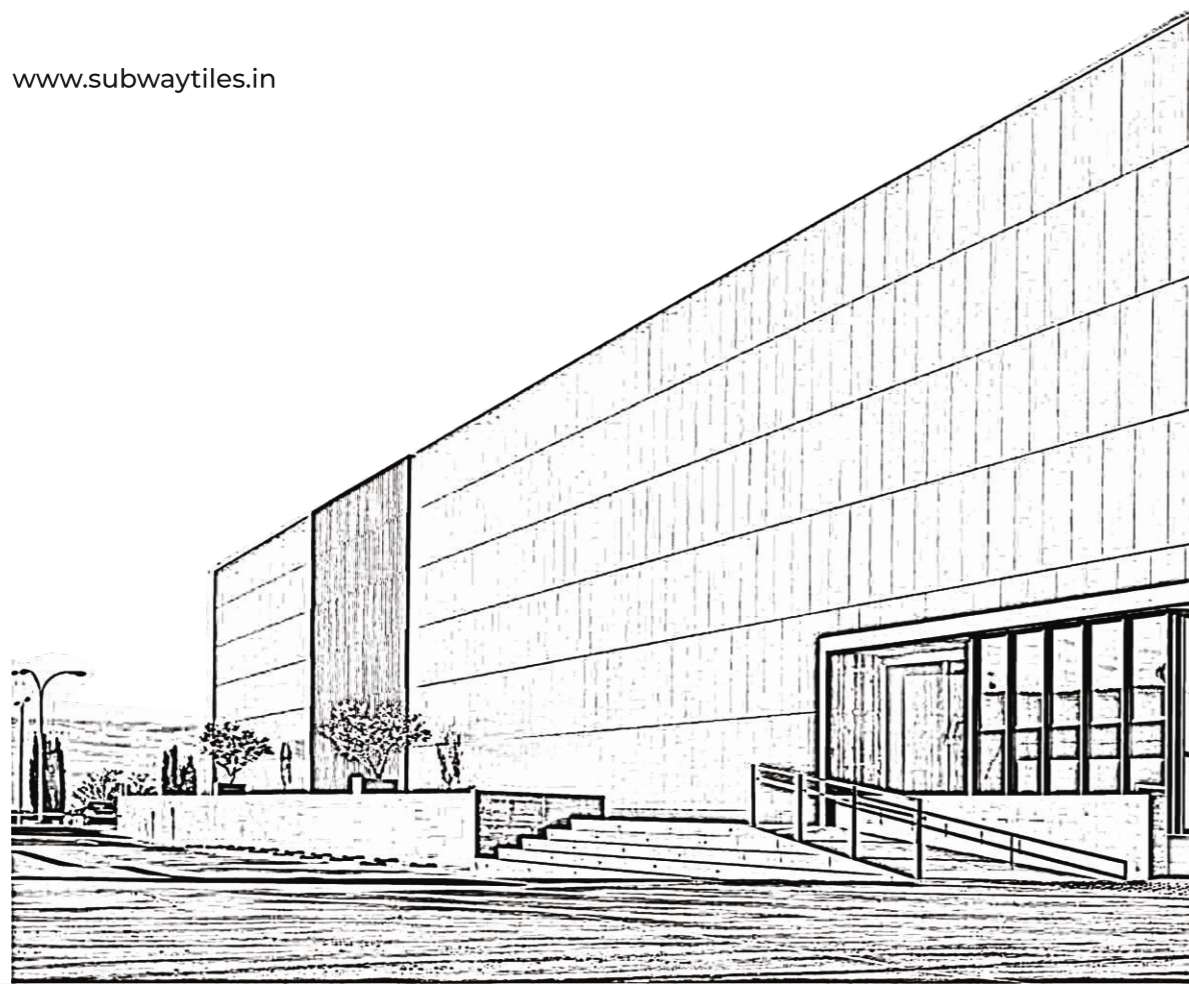
# THE STORY OF SUBWAY TILES LLP

Subway Tiles LLP has been a pioneer in the small format ceramic tile production from India. Subway Tiles was started with the purpose of developing the best collection in the small format ceramic tile for the bathroom, kitchen and other decoration based applications in the residential and commercial space.

Subway Tile has been providing the biggest range of subway base color tile collection as well as the ever developing range in the digital printing collection. With the use of 12 color System Digital Printing Machinery, we are able to produce the biggest range of colors, applications and surface possible in the subway tile produced in India.

Subway Tile has potentially the biggest distribution centre with the help of our supplier, stockist and retail counters across all the states of India. Subway has always been popular in the international market and with our high standards of quality and design portfolio, we are developing a strong market presence internationally.

[www.subwaytiles.in](http://www.subwaytiles.in)



**CUBE**  
COLLECTION

By

**SUBWAY**  
TILES™  
endless possibilities

QUALITY  
IN  
EVERY  
SQUARE



FROST  
PROOF



STAIN  
RESISTANCE



CHEMICAL  
RESISTANCE



ABSORPTION  
RESISTANCE



EASY TO  
CLEAN



SCRATCH  
RESISTANCE



EASY  
TO INSTALL



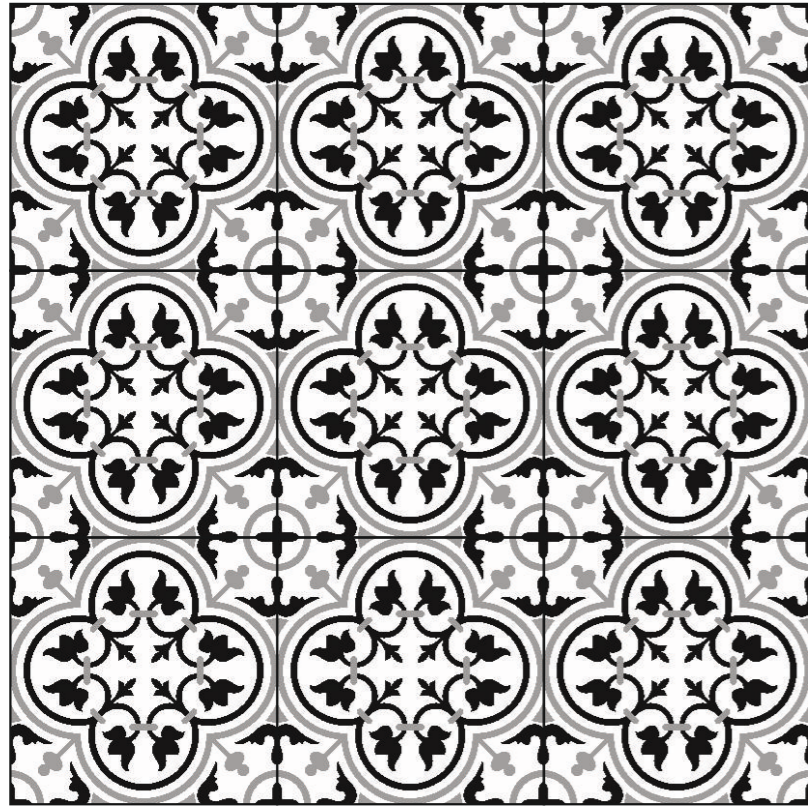
ECOLOGICAL



THERMIC IMPACT  
RESISTANCE

200X200MM

MATT WITH LUSTER



CLASSIC CUBE



FLOOR



WALL



High Tensile Strength



Environment Friendly



Abrasion Resistant



Heat & Fire Resistant



Chemical Resistant



Less Water Absorption

[www.subwaytiles.in](http://www.subwaytiles.in)

**CUBE**  
COLLECTION

By

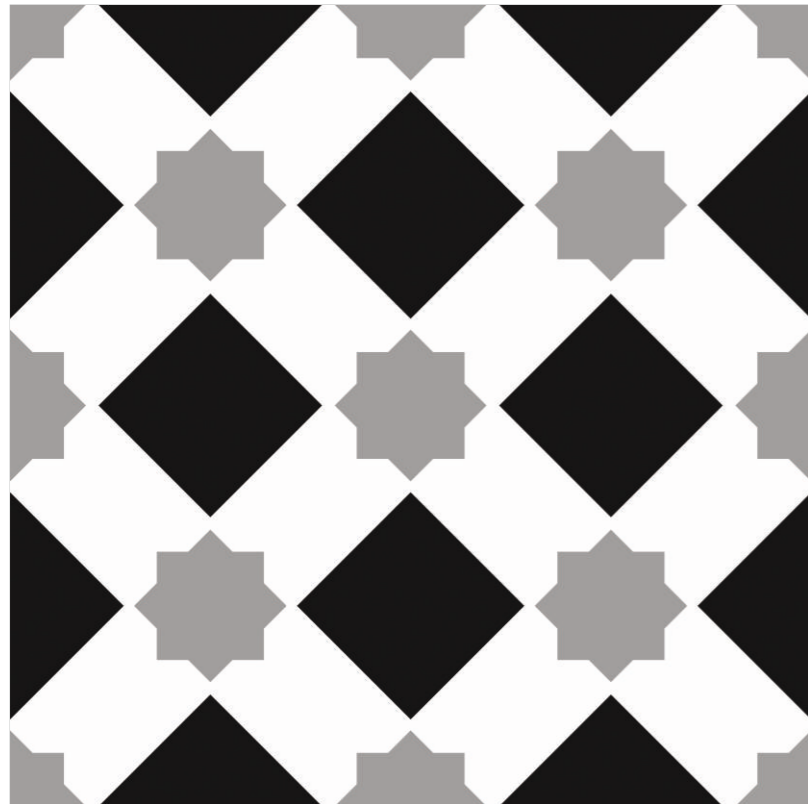
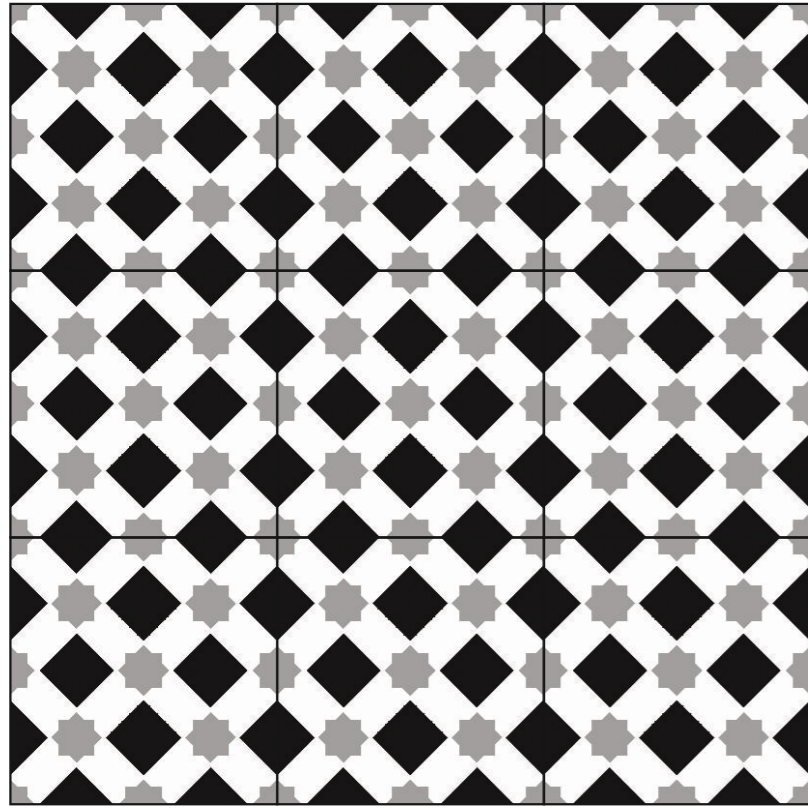
**SUBWAY**  
TILES

endless possibilities



200X200MM

MATT WITH LUSTER



MATRIX CUBE



FLOOR



WALL



High Tensile Strength



Environment Friendly



Abrasion Resistant



Heat & Fire Resistant



Chemical Resistant



Less Water Absorption

[www.subwaytiles.in](http://www.subwaytiles.in)

**CUBE**  
COLLECTION

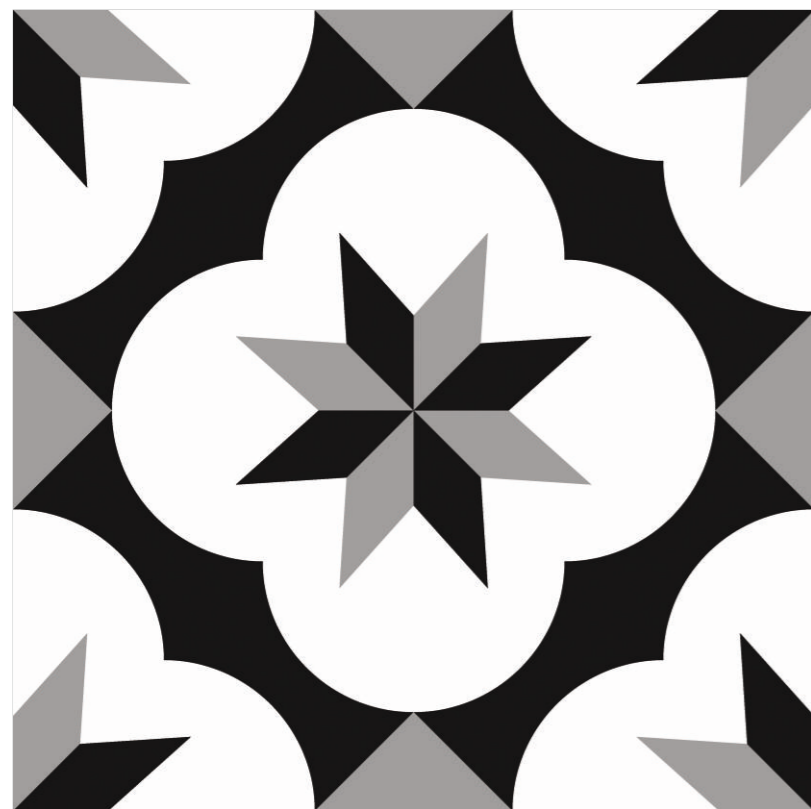
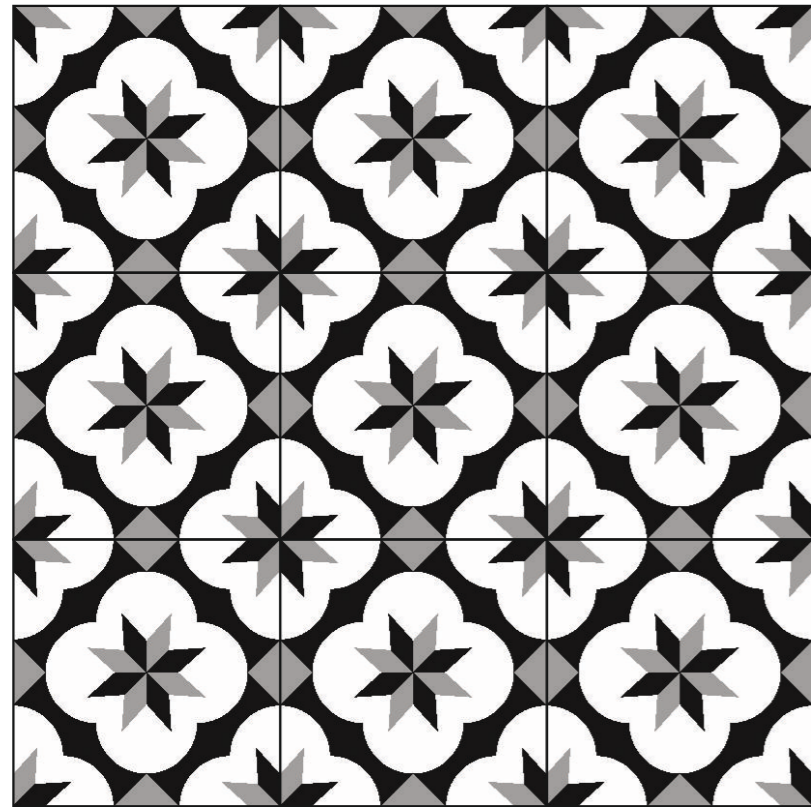
By

**SUBWAY**  
TILES

endless possibilities



**200X200MM**  
MATT WITH LUSTER



**QUAD CUBE**



[www.subwaytiles.in](http://www.subwaytiles.in)

**CUBE**  
COLLECTION

By

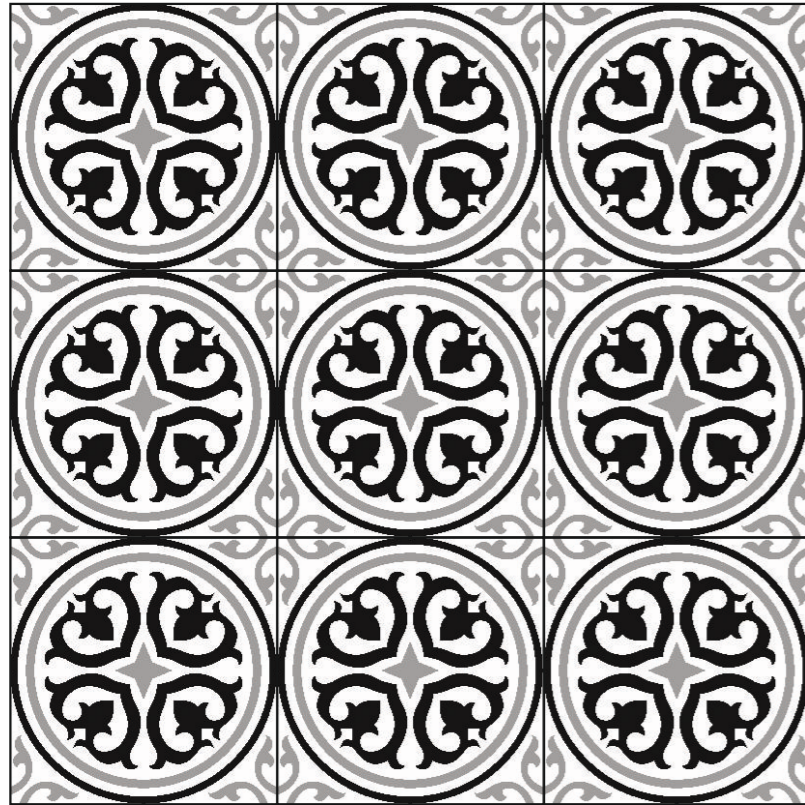
**SUBWAY**  
TILES

endless possibilities



200X200MM

MATT WITH LUSTER



VINTAGE CUBE



FLOOR



WALL



High Tensile Strength



Environment Friendly



Abrasion Resistant



Heat & Fire Resistant



Chemical Resistant



Less Water Absorption

[www.subwaytiles.in](http://www.subwaytiles.in)

**CUBE**  
COLLECTION

By

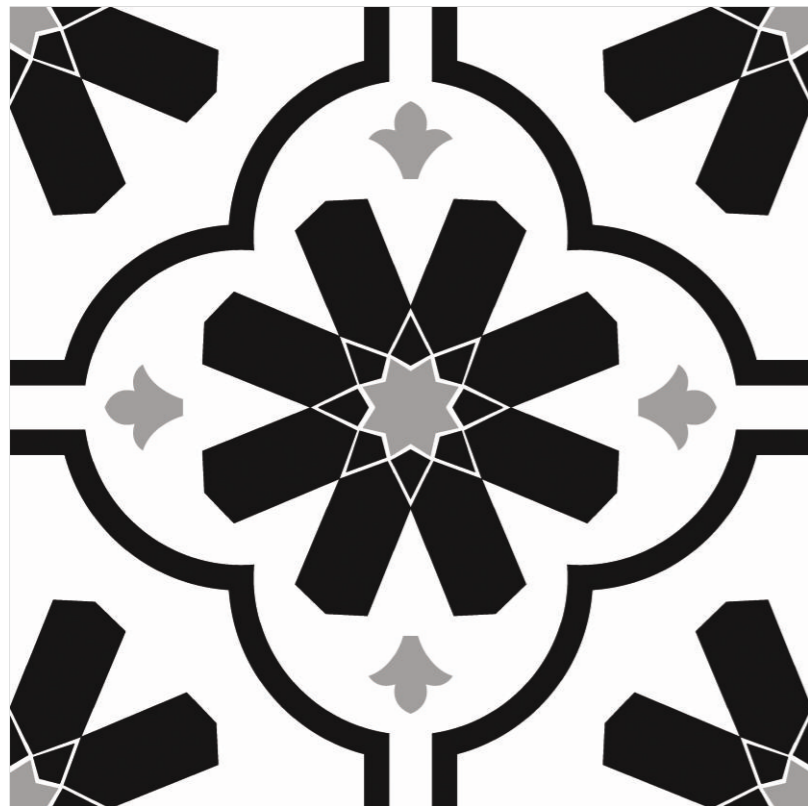
**SUBWAY**  
TILES

endless possibilities



200X200MM

MATT WITH LUSTER



CROWN CUBE



FLOOR



WALL



High Tensile Strength



Environment Friendly



Abrasion Resistant



Heat & Fire Resistant



Chemical Resistant



Less Water Absorption

[www.subwaytiles.in](http://www.subwaytiles.in)

**CUBE**  
COLLECTION

By

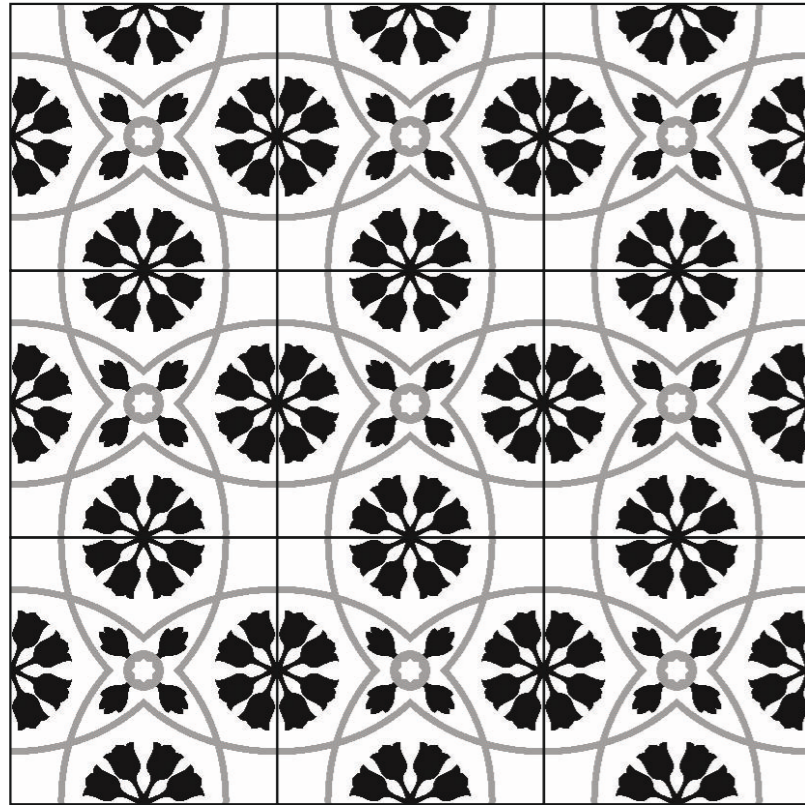
**SUBWAY**  
TILES

endless possibilities



**200X200MM**

MATT WITH LUSTER



**DECENT CUBE**



FLOOR



WALL



High Tensile Strength



Environment Friendly



Abrasion Resistant



Heat & Fire Resistant



Chemical Resistant



Less Water Absorption

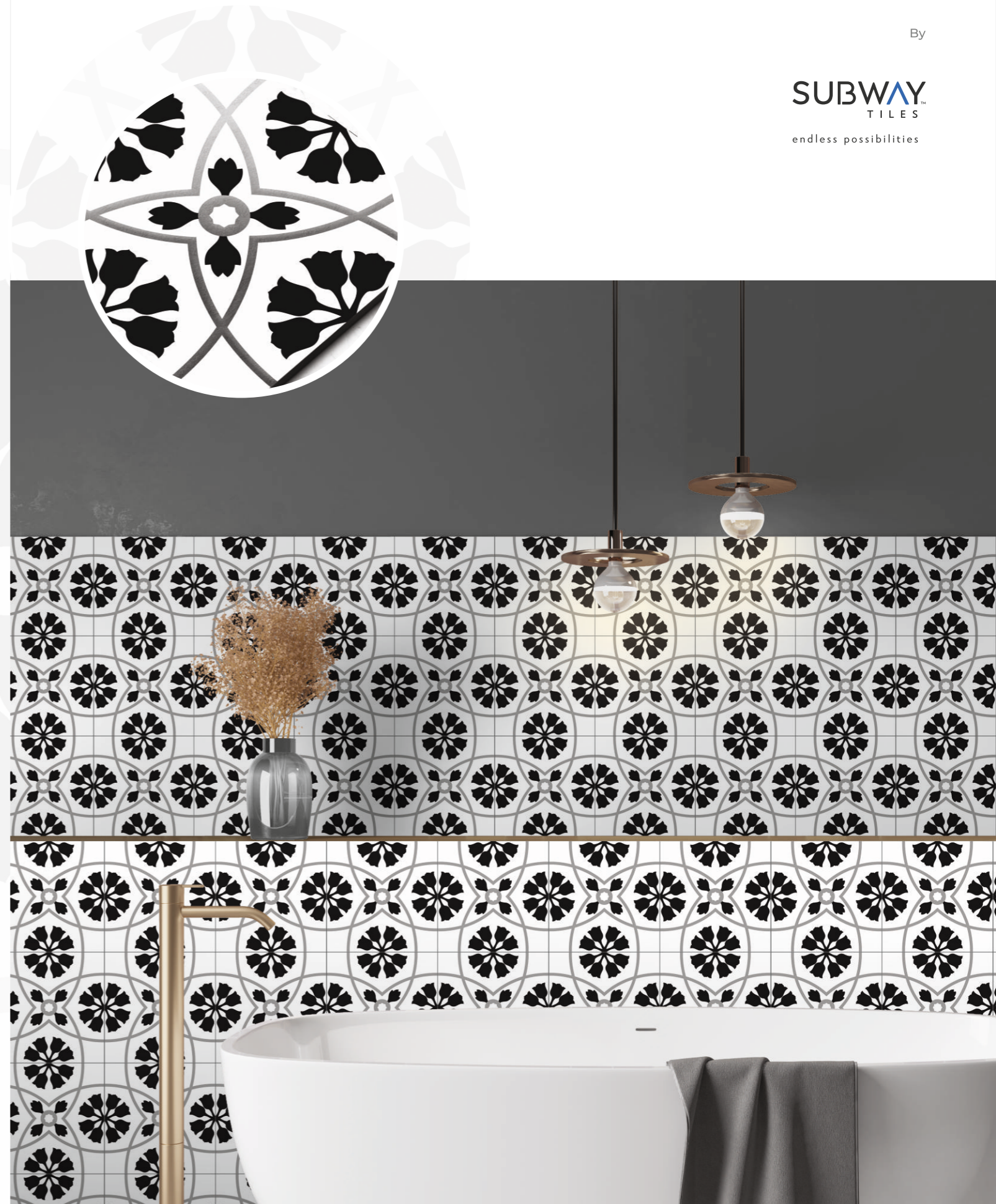
[www.subwaytiles.in](http://www.subwaytiles.in)

**CUBE**  
COLLECTION

By

**SUBWAY**  
TILES

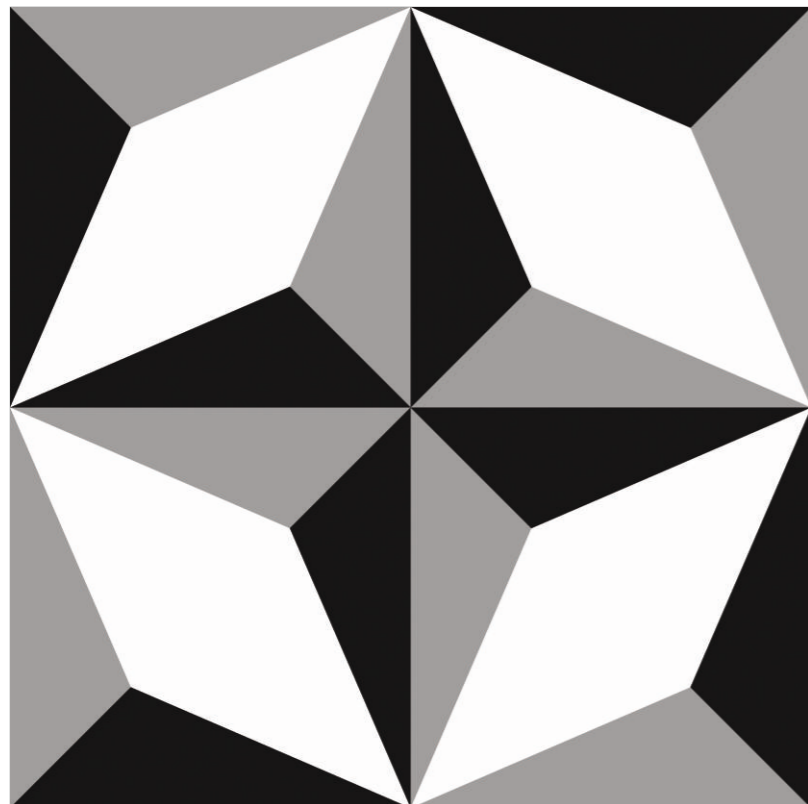
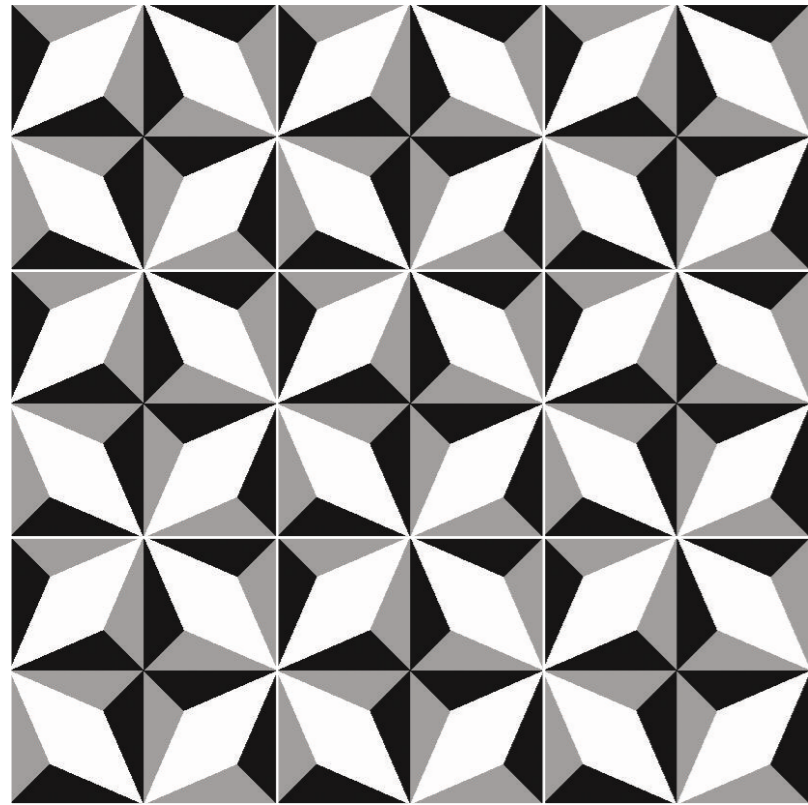
endless possibilities





**200X200MM**

MATT WITH LUSTER



**MONOLINE CUBE**



FLOOR



WALL



High Tensile Strength



Environment Friendly



Abrasion Resistant



Heat & Fire Resistant



Chemical Resistant



Less Water Absorption

[www.subwaytiles.in](http://www.subwaytiles.in)

**CUBE**  
COLLECTION

By

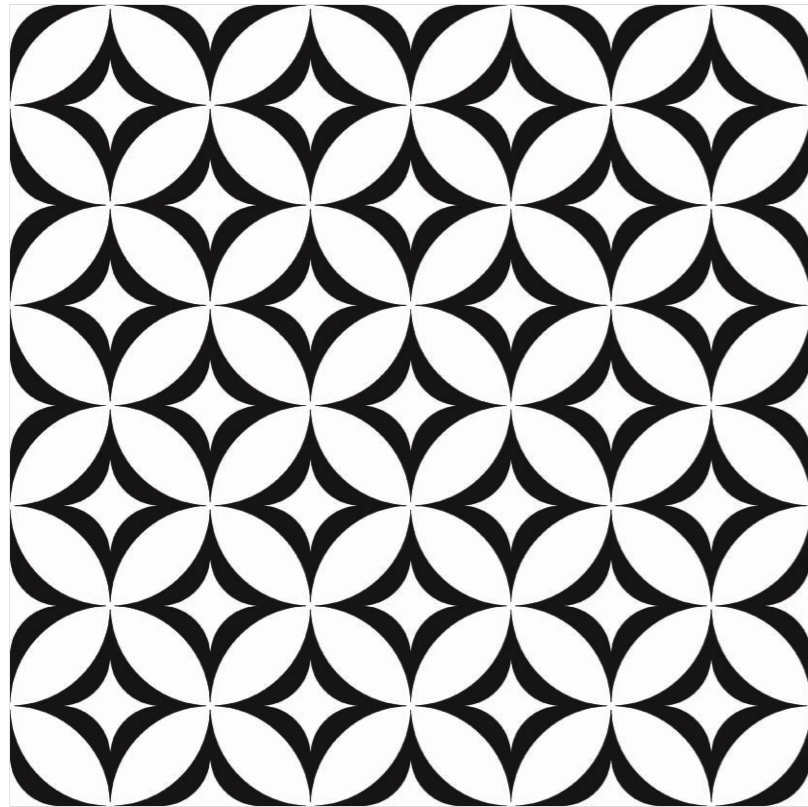
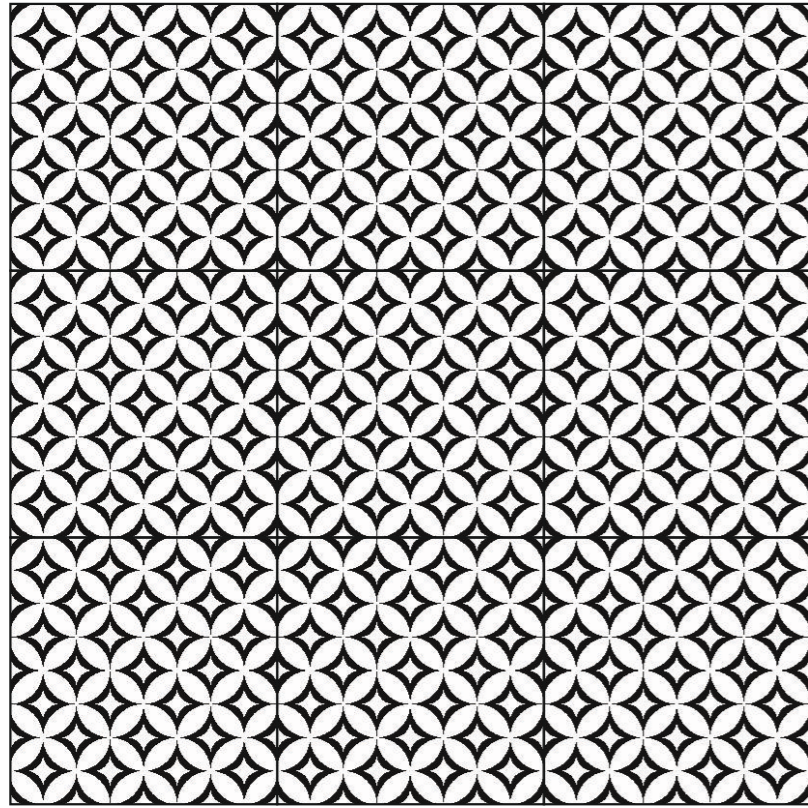
**SUBWAY**  
TILES

endless possibilities



200X200MM

MATT



FERRIS CUBE



FLOOR



WALL



High Tensile Strength



Environment Friendly



Abrasion Resistant



Heat & Fire Resistant



Chemical Resistant



Less Water Absorption

[www.subwaytiles.in](http://www.subwaytiles.in)

**CUBE**  
COLLECTION

By

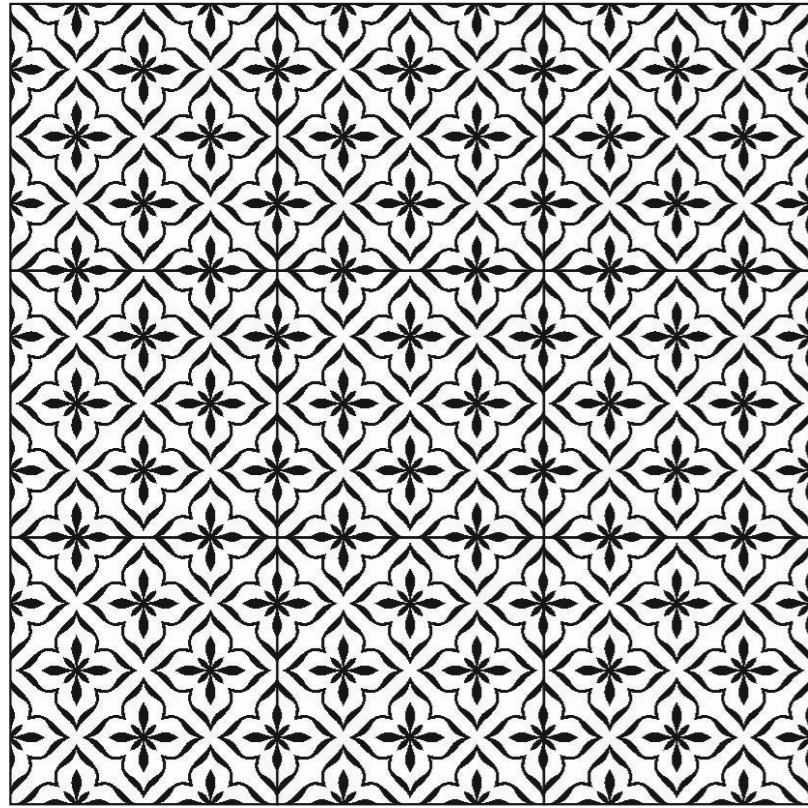
**SUBWAY**  
TILES

endless possibilities



200X200MM

MATT



ANTIQUÉ CUBE



www.subwaytiles.in

CUBE  
COLLECTION

By

SUBWAY  
TILES

endless possibilities



# CUBE

COLLECTION

---

Size	20x20mm
Pcs/Box	20 pcs.
Kg/Box	13.300 kg.
Coverage Area	8.61 sq. ft./0.800 sq.mtr.

[www.subwaytiles.in](http://www.subwaytiles.in)

**SUBWAY**<sup>TM</sup>  
TILES  
endless possibilities