

ISO 9001, 14001 & 45001  
CERTIFIED COMPANY

11 YEAR  
WARRANTY



EWC

# EXTERIOR

# CLADDING

100% Weather Proof  
6mm Exterior Laminate

DECORATING





# our STORY

Dear customer, it's our privilege that you have selected advance laminates for your surface decoration requirement. We have over 300 options in various finishes for your residential & commercial spaces be it your drawing room, bedroom, kitchen, wardrobe, office or showroom, we have everything for all needs. Utmost care has been provided while manufacturing each & every sheet because we understand the emotion of the end users while selecting the design.

This presentation also has QR codes given with each design if you wish to see the full sheet view of any design. Also we have given an application book that will help you while selecting the designs according to a particular application.

**HAPPY DESIGNING!**

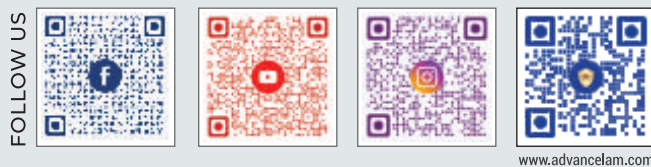
## YOUR VIRTUAL ASSISTANT

Now knowing more about Advance Laminate is very easy. Either you want any Advance folder, or have any query about any laminate shade or whatever you want to know about Advance laminate, just scan this **QR CODE**, Advance virtual assistant will help you to get all.

SAY "HI" & GET THE E-CATALOGUE OR MORE



+91 88000 91181



Tollfree: 1800-103-4740 (mon to sat, 10-7pm IST)

Scan the **QR CODE** to view celebrities video



83 + DISTRIBUTORS    20815 + ARCHITECTS INTERIOR DESIGNERS    41351 + DEALERS

41351 + DEALERS    50383 + CARPENTERS RECOMMENDATION    20815 + ARCHITECTS INTERIOR DESIGNERS

50383 + CARPENTERS RECOMMENDATION    41351 + DEALERS

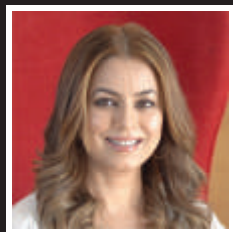
20815 + ARCHITECTS INTERIOR DESIGNERS    21 STATE    50 MILLION + SHEETS USED BY CONSUMERS TILL 15 AUGUST 21    21 STATE

50 MILLION + SHEETS USED BY CONSUMERS TILL 15 AUGUST 21    50383 + CARPENTERS RECOMMENDATION    41351 + DEALERS

20815 + ARCHITECTS INTERIOR DESIGNERS    50 MILLION + SHEETS USED BY CONSUMERS TILL 15 AUGUST 21

Numbers, that speak our presence, success & acceptance

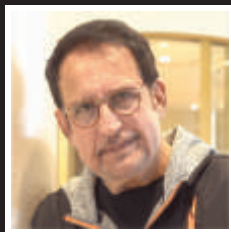
Recommended by  
POPULAR PERSONALITIES



MAHIMA CHAUDHRY



SHUBHANGI ATRE

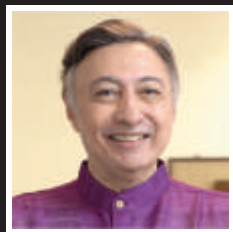


KIRAN KUMAR



OUR VIRTUAL LAUNCH GUEST FOR ADVANCE PVC FOLDER

KARISMA KAPOOR



ANANG DESAI



SHISHIR SHARMA



MAHESH THAKUR



RAKESH BEDI



KIKU SHARDA

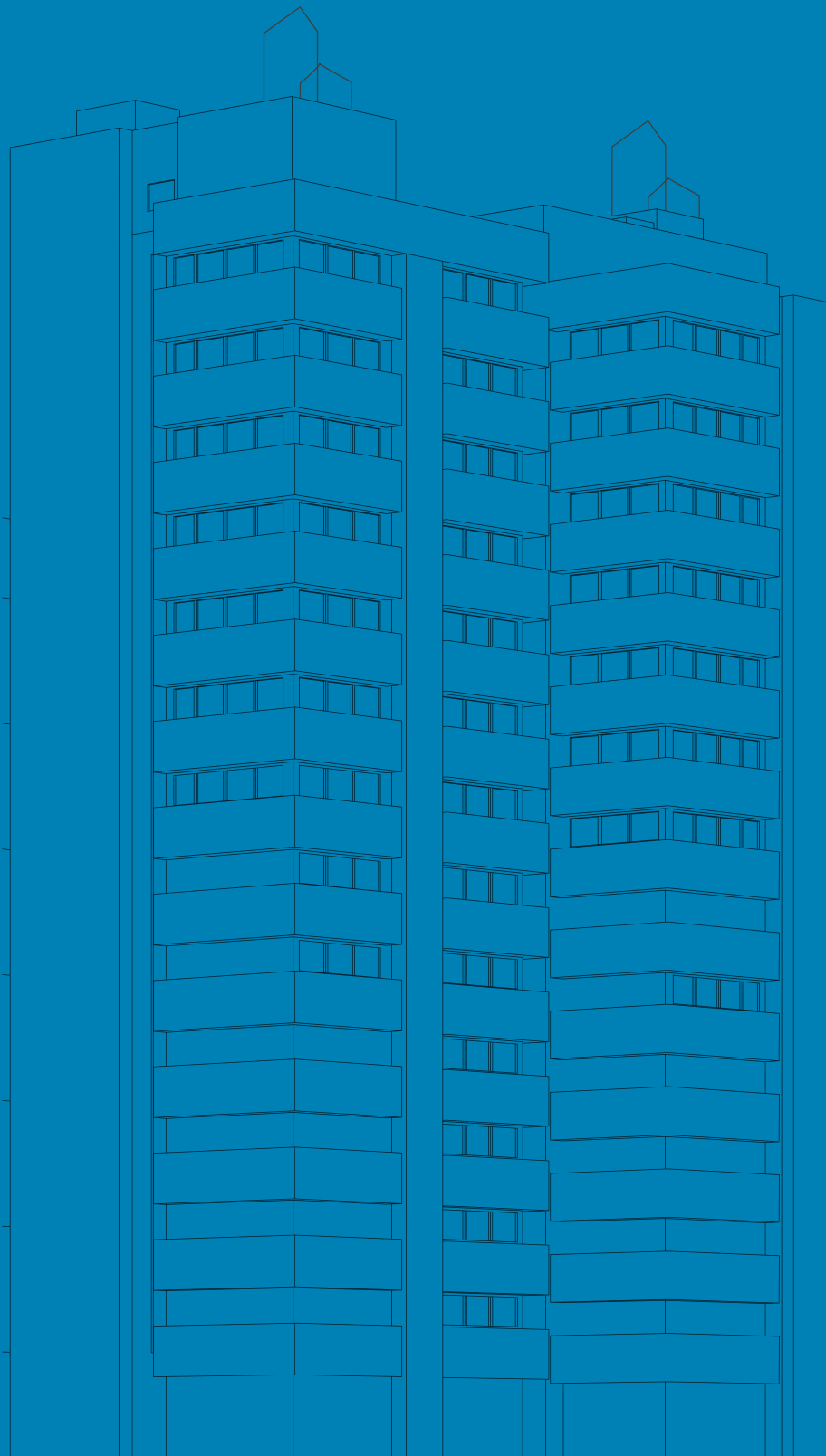


Scan the QR CODE to view celebrities video

# Larger than Life



EWC





# SURFACING SOLUTIONS *for* EXTERIOR

Endless Possibilities with High pressure laminates for exterior wall cladding.

**ADVANCE EWC** is a laminated panel for exteriors that requires zero maintenance. The panels combine the virtues of wood, its natural warmth and beauty, with technical requirements to ensure optimum performance on exteriors over time. **ADVANCE EWC** can be installed as a ventilated facade by way of overlapping slats, on false ceilings and on curved walls.

Make a great impression of your building's exterior. Don't leave any surface unattended. Our high-pressure exterior grade wall cladding panels ensure design flexibility and offer the durability you need for exterior designs.

When it comes to designing for an exterior, high-quality is a prerequisite. You want a decorative facade that can meet extreme requirements.

With **ADVANCE EWC**, you can also gain the peace of mind that you're working with a sustainability company.



# USE it Anywhere & Everywhere



## **HIGHLY RESISTANT** against all weather conditions & perfect for exterior applications

**ADVANCE EWC** is manufactured in such a way that it is highly resistant against all weather conditions either it is summer, winter or raining season. It is manufactured with high quality exterior grade design paper and layered with special protective film.

## Reasons of being perfect for **EXTERNAL WALL CLADDING** in any weather conditions:

---

### Most advance manufacturing process that ensures

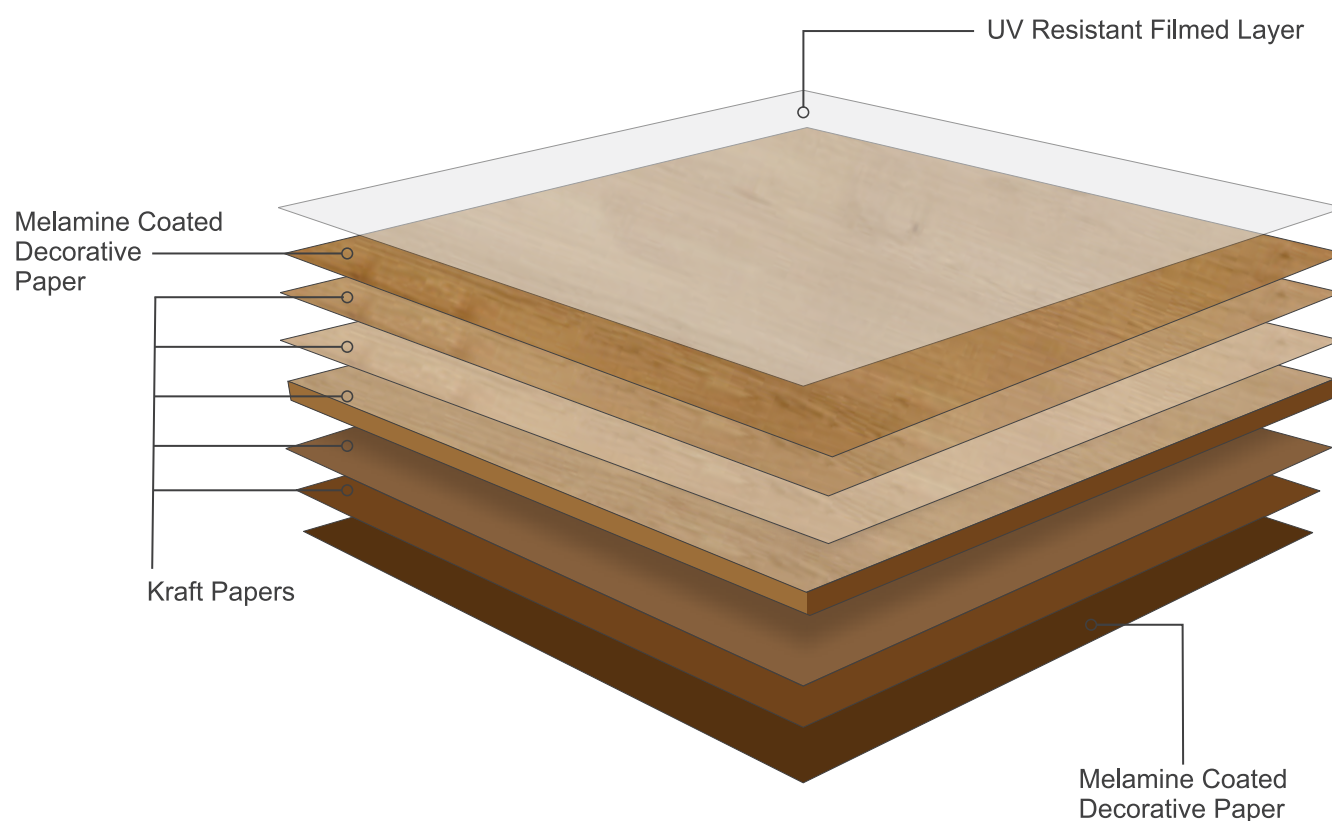
- High dimension stabilities
- High bending resistant
- High Impact resistant
- crack resistant
- Fire retardant properties

### Use of high quality special decor paper ensures

- Stable against light , chemical and ink
- Highly rated on blue wool and grey scale that make it perfect for use in exterior
- Certified decor papers for light fastness.

### Layered with special UV protective film ensures

- All weather condition stability
- Resistant to acid rain
- Superior UV resistant properties.
- Scratch resistant
- Superior chemical resistant
- Easy to clean surface
- High colour fastness

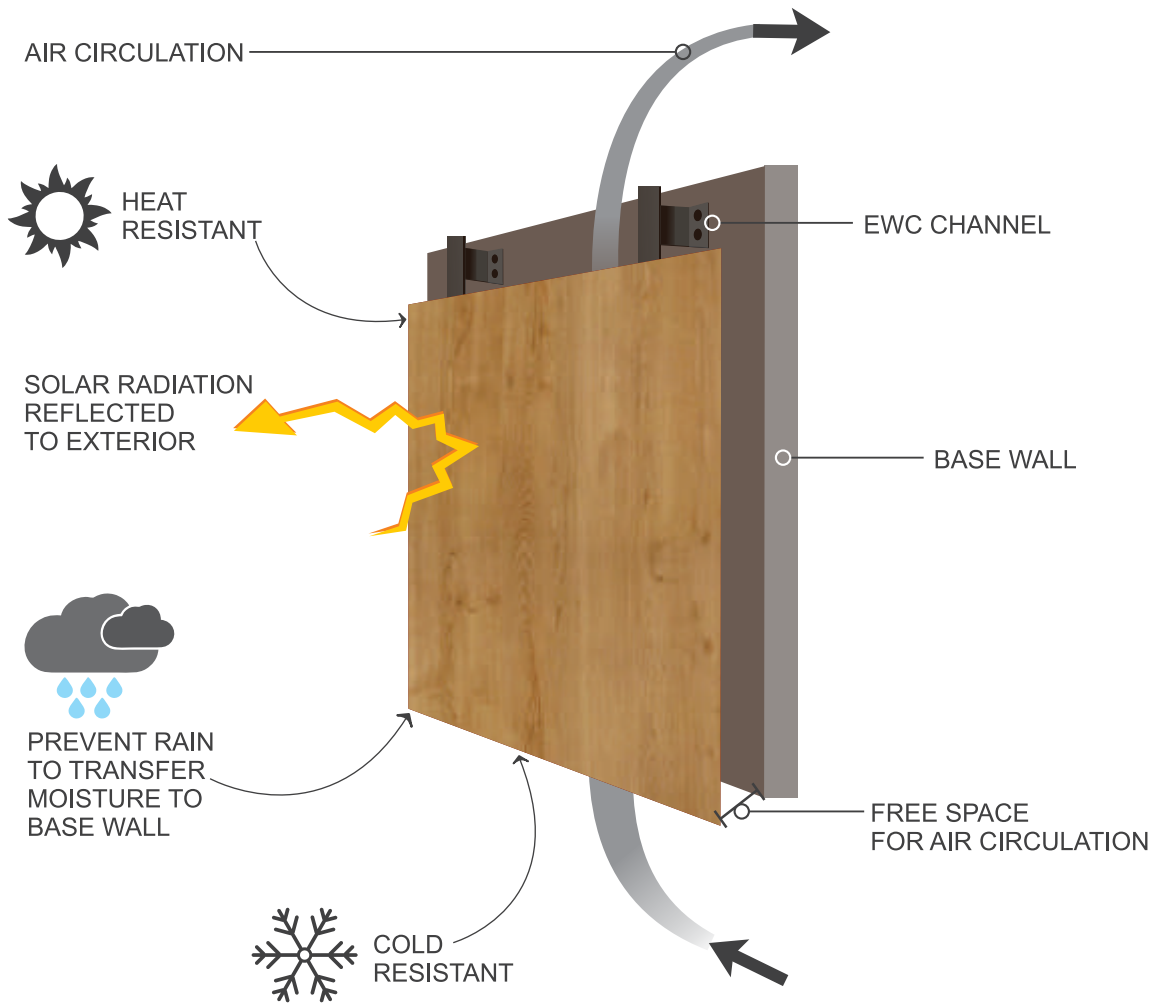




“

Not only beautify but also keeps external wall cool thus prevent external heat to come inside. **ADVANCE EWC** prevent direct heat to fall on base wall that provides more comfortable environment & saves the significant energy.

”



**LOW TRANSMISSION OF TEMPERATURE INTO THE INTERIOR OF BUILDING.**

The ventilated façade is an efficient bioclimatic architecture solution that provides thermal insulation. In other words, it reduces heat dissipation in the cold months and heat absorption in the warmer months, resulting in a marked improvement in comfort inside the building.

In the summer, or during hot spells, the sun shines on the **ADVANCE EWC** instead of on the building. This solar radiation heats the air in the air chamber generating a "chimney" effect due to the change in its density. This generated ventilation avoids the accumulation of heat on the façade, which together with the thermal insulation are the perfect combination to protect the building for atmospheric agents

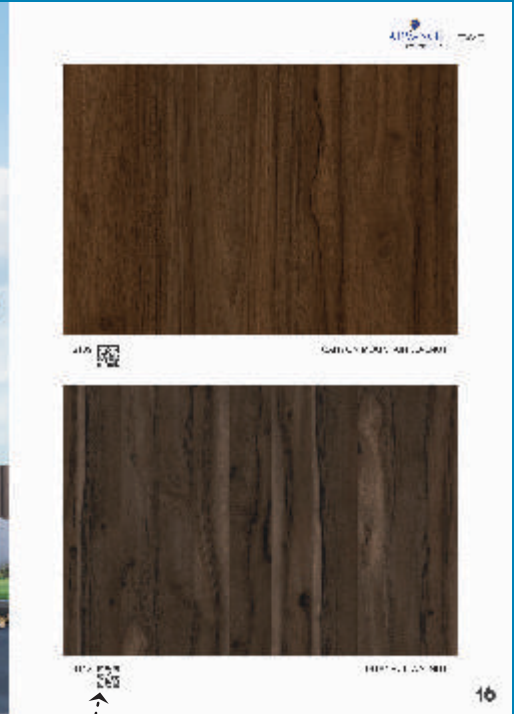
In winter, or during cold spells, the ventilated façade acts as a heat accumulator, given that the air chamber assists in the thermal stability of the system. This ventilated façade construction system together with the thermal insulation prevents the loss of heat of the building.

**Applications Area**





## QR CODE with every shade



QR CODE  
**SCAN**  
TO VIEW  
8X4 FEET  
SHADE ▲

FEATURES THAT  
**HELP** YOU  
Laminate  
selection

EWC Application Booklet  
is available in PDF format

QR CODE



Scan &  
Download



EWC Full Figure Booklet  
is available in PDF format

QR CODE



Scan &  
Download



EXTERIOR Wall Cladding  
Folder is available in  
PDF format

QR CODE



Scan &  
Download





6107 SF  
GRENADA PINE







6107 SF 

GRENADA PINE







6114 SF | PG  
DELANO | 28  
EICHE

6109 SF | PG  
CANYON | 18  
MOUNTAIN  
WALNUT



6108 SF  
HASTINGS SANDAL







190x170mm

6108 SF



HASTINGS SANDAL



# MOOD BOARD



6107 SF  
GRENADA PINE | PG  
10

6111 SF  
BENGALI  
MANGO | PG  
25





NORTH WALNUT | PG  
6115 SF | 21



6104 SF  
JACKSON  
HICKORY

PG  
32

6109 SF  
CANYON  
MOUNTAIN  
WALNUT



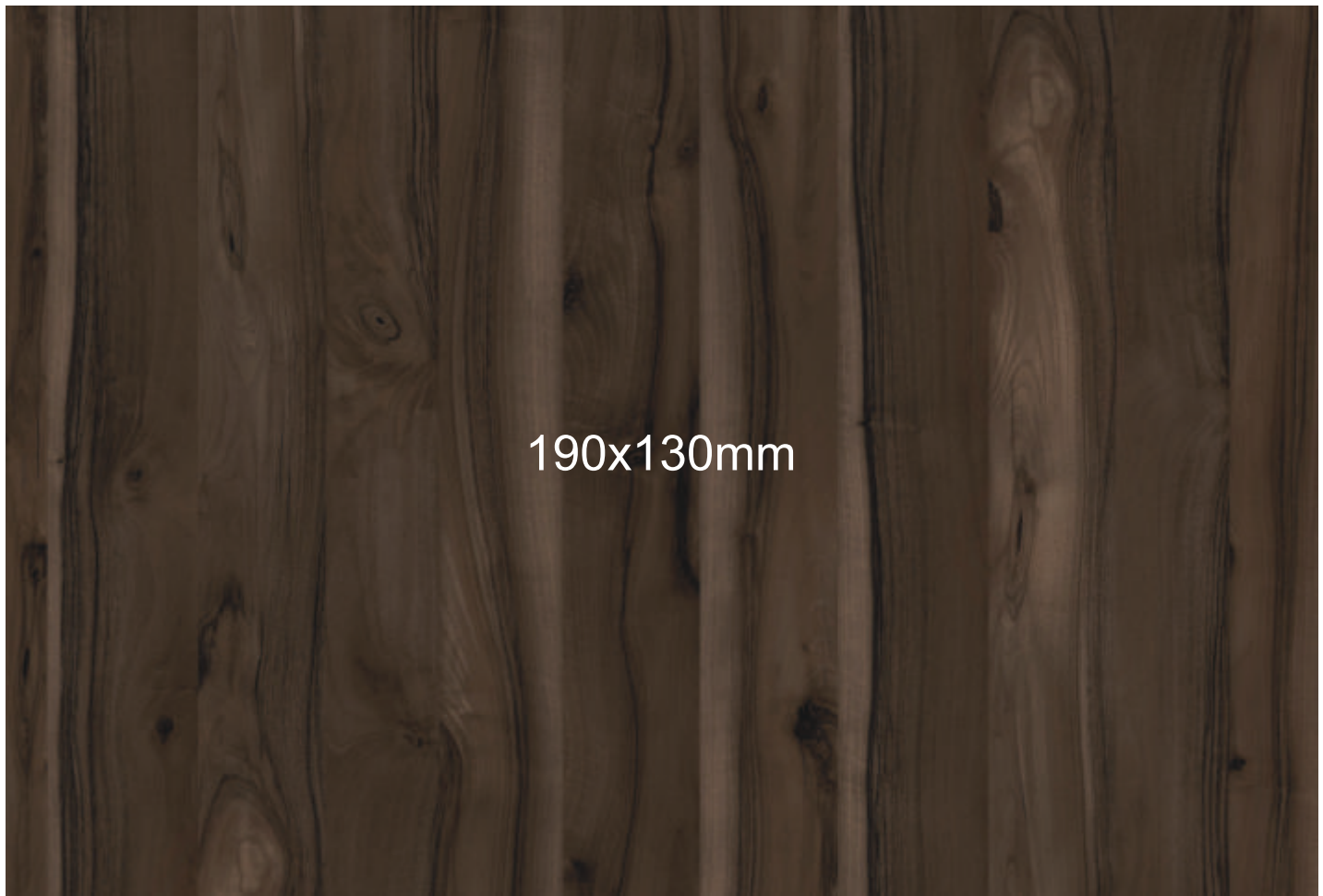




190x130mm

6109 SF 

CANYON MOUNTAIN WALNUT



190x130mm

6112 SF 

ISTANBUL WALNUT

**MOOD BOARD**

*Application*



6115 SF  
NORTH WALNUT | PG  
21

6108 SF  
HASTINGS SANDAL | PG  
14





6112 SF  
ISTANBUL  
WALNUT | PG 18



6113 SF  
MAHOGANY | PG 25

6107 SF  
GRENADA PINE | PG 10





190x170mm

6115 SF 

NORTH WALNUT

6115 SF  
NORTH WALNUT





**MOOD  
BOARD**

*Application*





6108 SF | PG  
HASTING | 14  
SANDAL

6115 SF | PG  
NORTH WALNUT | 21





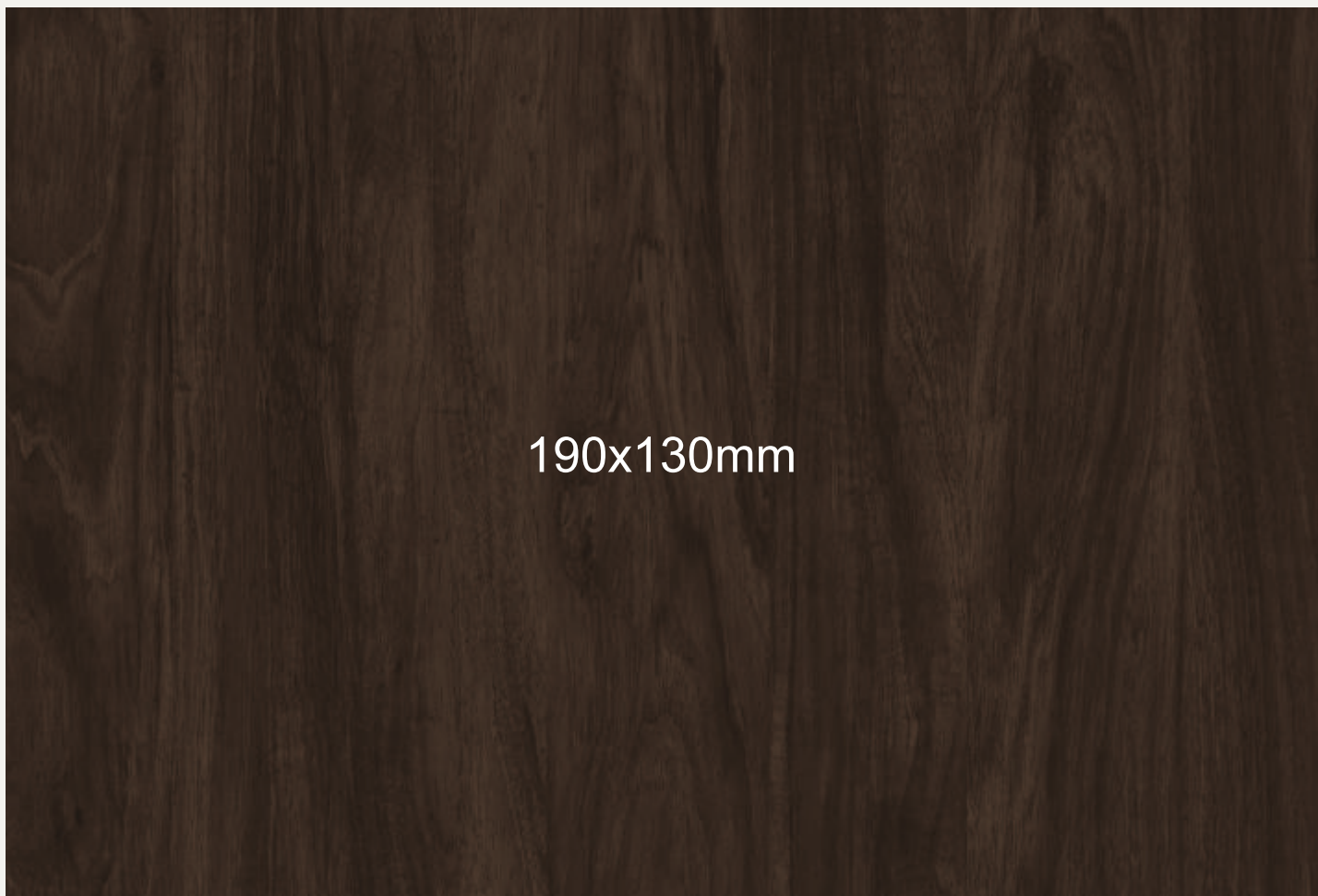


190x130mm

6113 SF



MAHOGANY



190x130mm

6111 SF



BENGALI MANGO



6111 SE  
BENGALI  
MANGO

6113 SF  
MAHOGANY



6110 SF  
CANYON  
MOUNTAIN  
OAK

6109 SF | PG  
CANYON | 18  
MOUNTAIN WALNUT







190x130mm

6114 SF



DELANO EICHE



190x130mm

6110 SF



CANYON MOUNTAIN OAK



**MOOD  
BOARD**

*Application*





6114 SF | PG  
DELANO | 28  
EICHE

6110 SF | PG  
CANYON | 28  
MOUNTAIN OAK



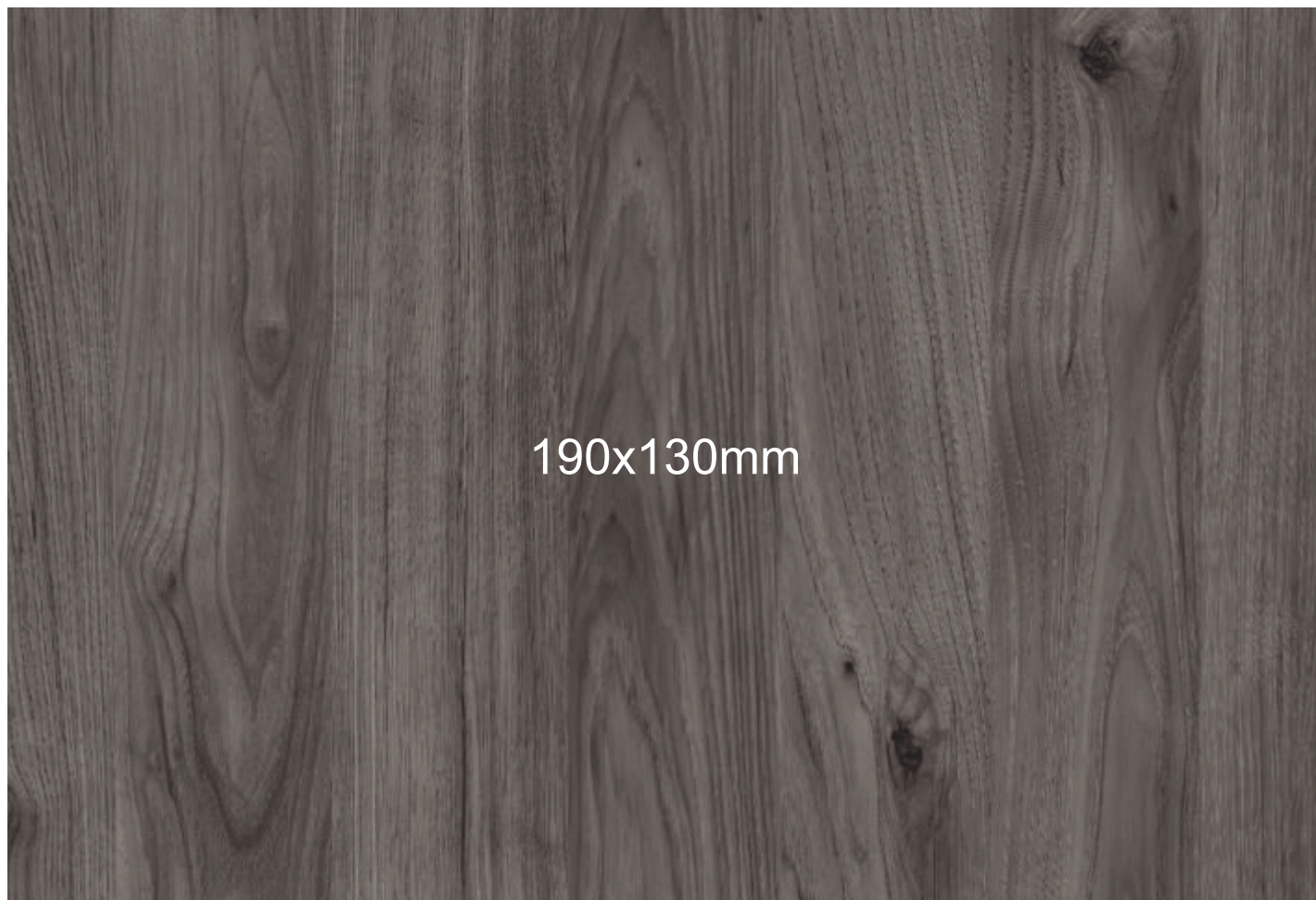


6103 SF  
JACKSON  
HICKORY  
GREY

6104 SF  
JACKSON  
HICKORY







190x130mm

6103 SF



JACKSON HICKORY GREY



190x130mm

6104 SF



JACKSON HICKORY



6121 SF  
CYPRUS  
METAL  
STONE



6122 SF  
GREY  
LOTO  
STONE







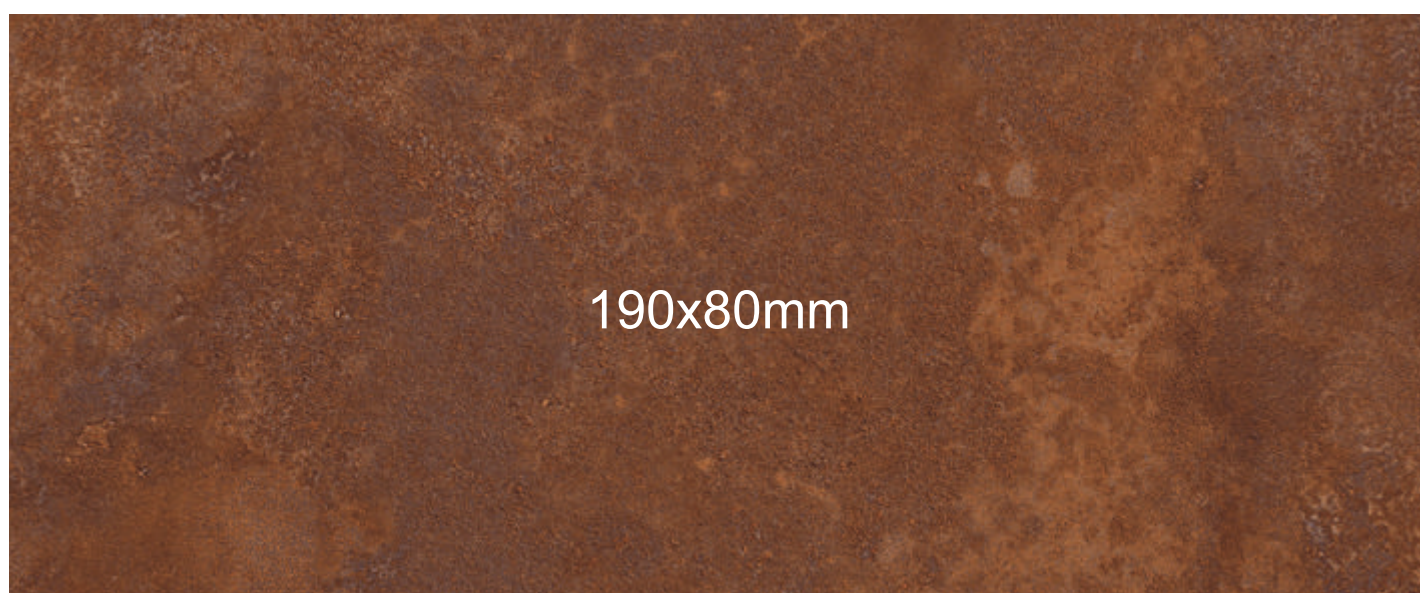
6122 SF 

GREY LOTO STONE



6123 SF 

LOTO STONE



6121 SF 

CYPRUS METAL STONE





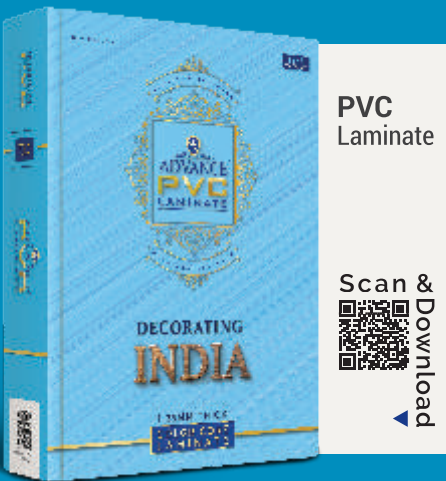
1mm  
Folder

Scan & Download



0.8mm  
Folder

Scan & Download



PVC  
Laminate

Scan & Download



PVC  
Laminate

Scan & Download



EWC  
Folder

Scan & Download



# Advance EWC

**PRODUCT :** High pressure decorative laminated sheets

**SIZE :** 2440 x 1220 mm

**THICKNESS :** 6.00 mm

| EXTERIOR WALL CLADDING TEST REPORT             |                  |  |                        |                                   |      |
|--|------------------|--|------------------------|-----------------------------------|------|
| TECHNICAL SPECIFICATIONS                       |                  |  |                        |                                   |      |
| Properties                                     | Test Method      | Unit   | Standard Value         | Test Results Of Advance Laminates |      |
| Thickness                                      | EN 438 2-5       | mm   | 6.0 ±0.40 mm           | 6.0 ±0.30 mm                      |      |
| Length & Width                                 | EN 438 2-6       | mm   | +10-0                  | +5 mm                             |      |
| Edge Straightness                              | EN 438 2-7       | mm/M   | ≤ 1.5                  | < 1.5                             |      |
| Squareness                                     | EN 438 2-8       | mm/M   | ≤ 1.5                  | < 1.5                             |      |
| Flatness                                       | EN 438 2-9       | mm/M   | Max 5.0 mm/M           | Max 4.0 mm/M                      |      |
| Resistance to impact by large Daimeter Ball    | EN 438 2-21      | mm   | 1800mm                 | 2000mm                            |      |
|  |                  |  | Dropped Hight          | Dropped Hight                     |      |
| Dimensional Stability at Evedated Temperature  |                  | EN 438 2-17                                      | %                      |                                   |      |
| A) Longitudinal                                | 0.30 (Max.)      |  |                        |                                   | 0.20 |
| B) Transverse                                  | 0.60 (Max.)      |  |                        |                                   | 0.32 |
| Panel Surface Visibility                       | EN 438-2:5.2.4.2 | Dirt, spots, any similar surface defects         | ≤ 2 mm/m <sup>2</sup>  | Accepted                          |      |
|  |                  | Fiber, hair, scratches & similar surface defects | ≤ 20 mm/m <sup>2</sup> | Accepted                          |      |
| Flexural Modulus                               | ISO 178          | Mpa  | 9000 (Min.)            | 9500                              |      |
| Flexural Strength                              | ISO 178          | Mpa  | 80 (Min.)              | 90                                |      |
| Density  | ISO 1183         | g/cm <sup>3</sup>                                | 1.35 (Min.)            | 1.40                              |      |
| Resistance to wet conditions, increase in mass | EN 438-2:15      | Increase in mass                                 | 8% (Max.)              | 3.5                               |      |
|  |                  | Appearance                                       |                        |                                   |      |
|  |                  | • Surface rating                                 | 4 (Min.)               | 5                                 |      |
|  |                  | • Edge rating                                    | 3 (Min.)               | 3                                 |      |

| LIGHT FASTNESS AND WEATHER RESISTANCE   |             |           |                   |       |
|---|-------------|-----------|-------------------|-------|
| Resistance to artificial weathering including light fastness, after 650 MJ/M <sup>2</sup> | EN 438-2-29 | Contrast  | Grey Scale Rating | 3-4   |
|   | EN 438-2-29 | Apperance | Rating            | 4-5   |
| Resistance to UV light, after 1500 hours exposure   | EN 438-2-28 | Contrast  | Grey Scale Rating | 3-4   |
|   | EN 438-2-28 | Apperance | Rating            | 4-5   |
| Resistance to climatic shock  | EN 438-2:19 |           | Index Ds (min)    | ≥0.95 |
|   |             |           | Index Dm (min)    | ≥0.95 |
|   |             |           | Rating (min)      | ≥4    |



**ALL WEATHER RESISTANT**



**UV RESISTANT**



**CORROSION RESISTANT**



**GRAFFITI RESISTANT**



**TERMITES RESISTANT**



**IMPACT RESISTANT**



**FLAME RESISTANT**



**ABRASION RESISTANT**





**EWC**

**ADVANCE DECORATIVE LAMINATES**  
(An ISO 9001 ISO 14001 & ISO 45001 Certified Company)

Email: [info@advancelam.com](mailto:info@advancelam.com)  
[www.advancelam.com](http://www.advancelam.com)

**Tollfree 1800 103 4740**  
Mon to Sat , 10-7pm IST