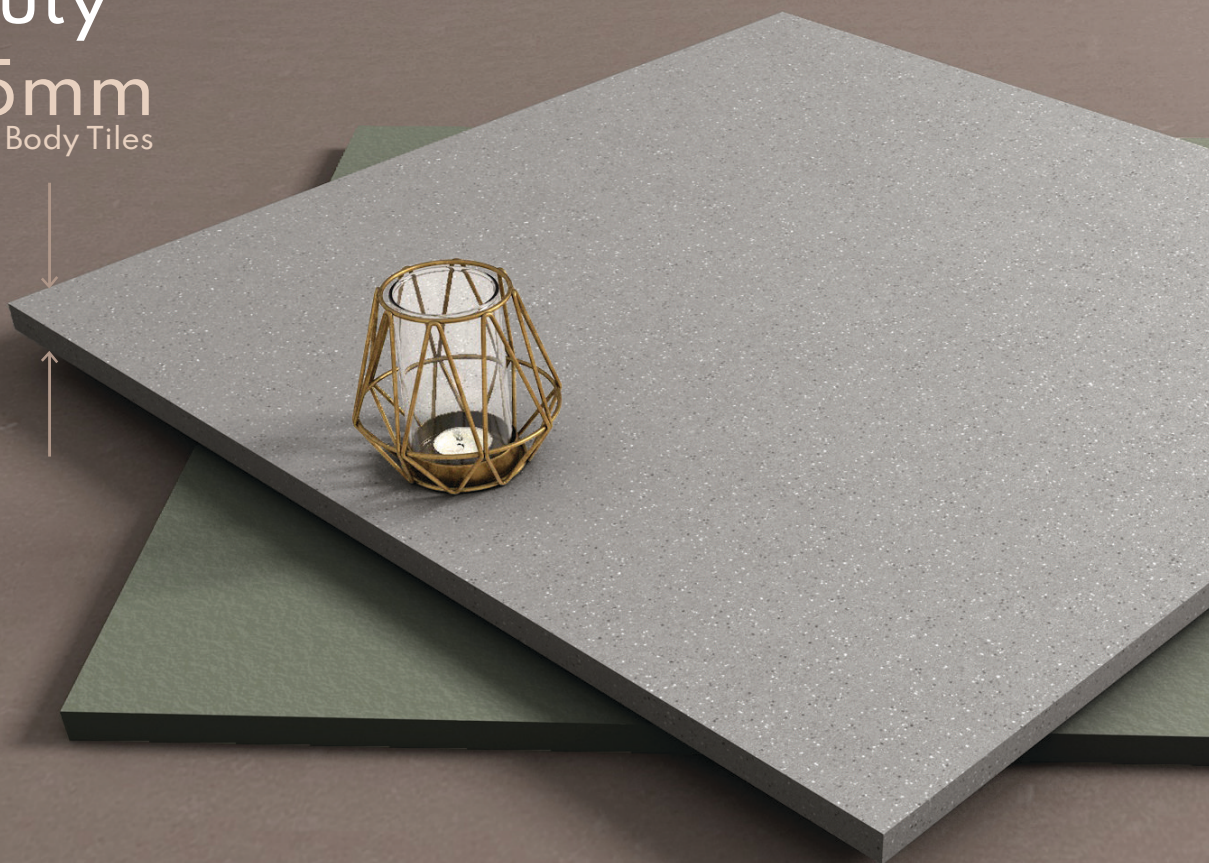


NUMBER  
**ONE** IN  
FULLBODY  
TILES

**mozart**  
THE TILE COMPOSER

Heavy  
Duty

15mm  
Full Body Tiles



600x  
600mm

PRODUCT  
COLLECTION 2022

**BOLD**  
15MM FULLBODY TILES



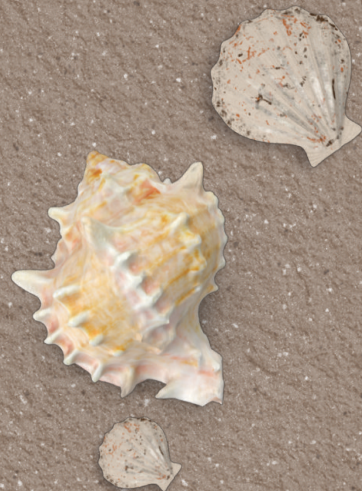
# EXPERIENCE THE DAUNTLESS SURFACES

Mozart brings an ultimate collection of robust, resilient, and superiorly aesthetic collection of surfaces in premium punches. The exceptional **Bold 15mm Fullbody** Tiles in a standard and River Punch are all your spaces need and deserve.

Now craft spaces superiorly robust and elegantly aesthetic with Mozart.

**BOLD**  
15MM FULLBODY TILES

[www.mozartvitrified.com](http://www.mozartvitrified.com)



## MATT FINISH

## RIVER PUNCH

COCOA MATT	COCOA RIVER
TIMBER MATT	TIMBER RIVER
HONEY MATT	HONEY RIVER
SILK MATT	SILK RIVER
METAL MATT	METAL RIVER
FROST MATT	FROST RIVER
VERDE MATT	VERDE RIVER
KOTA MATT	KOTA RIVER

The Bold 15mm Fullbody Tiles collection is available in a wide array of versatile colors which are designed to compliment spaces indoors, outdoors, and of various styles.

# APPLICATION AREAS

Transform spaces effortlessly resilient and elegant with the extensive application possibilities of the premium and rugged collection.



Garden



Parking



Swimming Pool  
Surrounding Area



Terraces &  
Balconies



Patio &  
Verandah

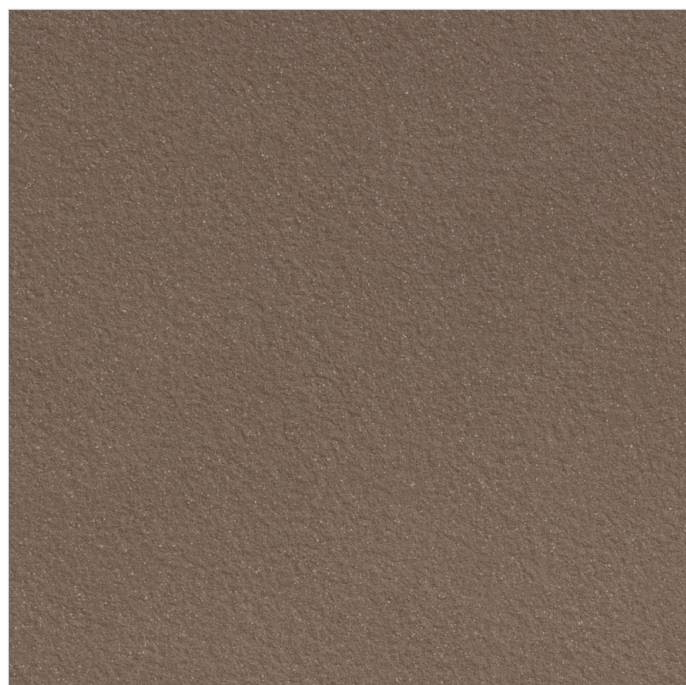


Pathways





COCOA MATT



COCOA RIVER

**600x  
600mm**

-  
**Matt Finish &  
River Punch**



ZERO  
MAINTENANCE



LOW WATER  
ABSORPTION



IMPACT  
RESISTANCE



HIGH  
STRENGTH



TIMBER MATT



TIMBER RIVER

**600x  
600mm**

-  
**Matt Finish &  
River Punch**



ZERO  
MAINTENANCE



LOW WATER  
ABSORPTION



IMPACT  
RESISTANCE



HIGH  
STRENGTH



HONEY MATT



HONEY RIVER

**600x  
600mm**

-  
**Matt Finish &  
River Punch**



ZERO  
MAINTENANCE



LOW WATER  
ABSORPTION



IMPACT  
RESISTANCE



HIGH  
STRENGTH



SILK MATT



SILK RIVER

**600x  
600mm**

-  
**Matt Finish &  
River Punch**



ZERO  
MAINTENANCE



LOW WATER  
ABSORPTION

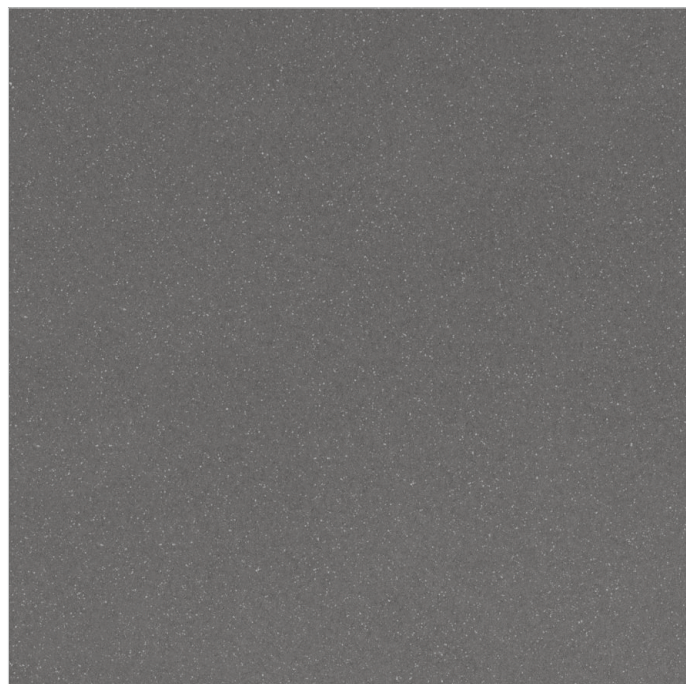


IMPACT  
RESISTANCE

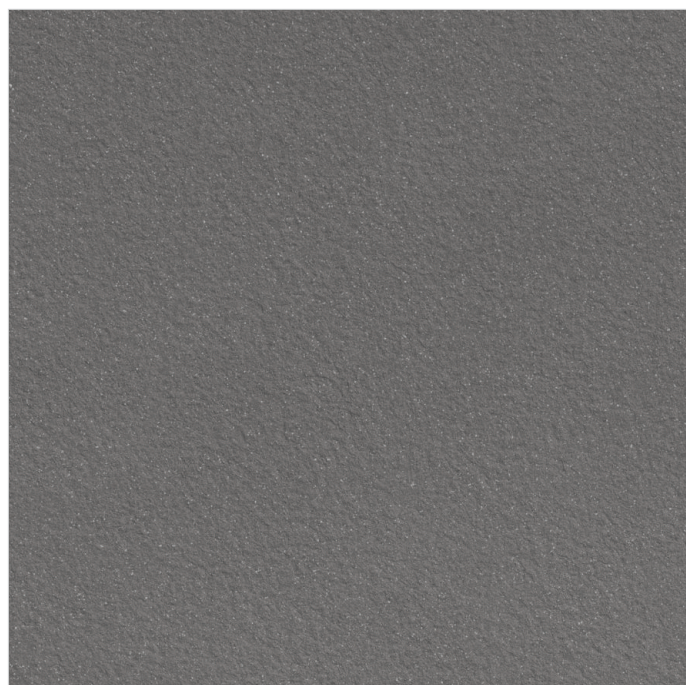


HIGH  
STRENGTH





METAL MATT



METAL RIVER

**600x  
600mm**

-  
**Matt Finish &  
River Punch**



ZERO  
MAINTENANCE



LOW WATER  
ABSORPTION



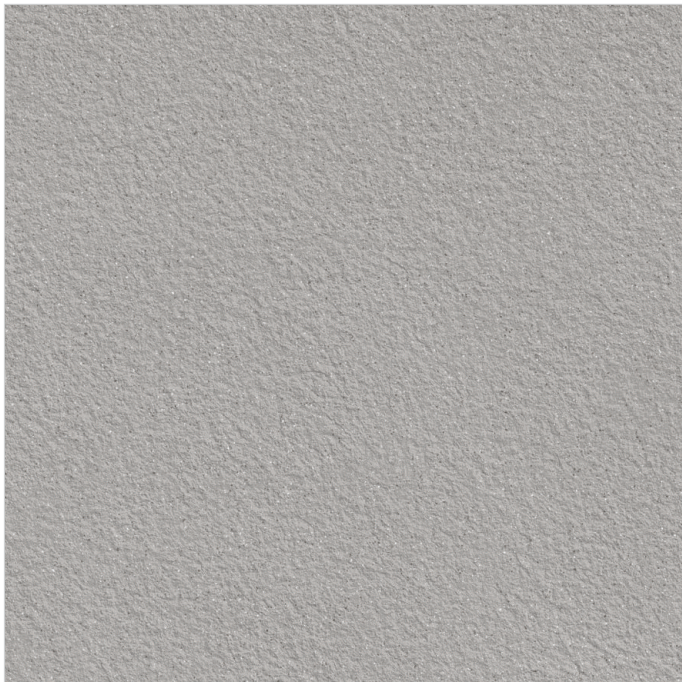
IMPACT  
RESISTANCE



HIGH  
STRENGTH



FROST MATT



FROST RIVER

**600x  
600mm**

-  
**Matt Finish &  
River Punch**



ZERO  
MAINTENANCE



LOW WATER  
ABSORPTION



IMPACT  
RESISTANCE



HIGH  
STRENGTH



VERDE MATT



VERDE RIVER

**600x  
600mm**

-  
**Matt Finish &  
River Punch**



ZERO  
MAINTENANCE



LOW WATER  
ABSORPTION



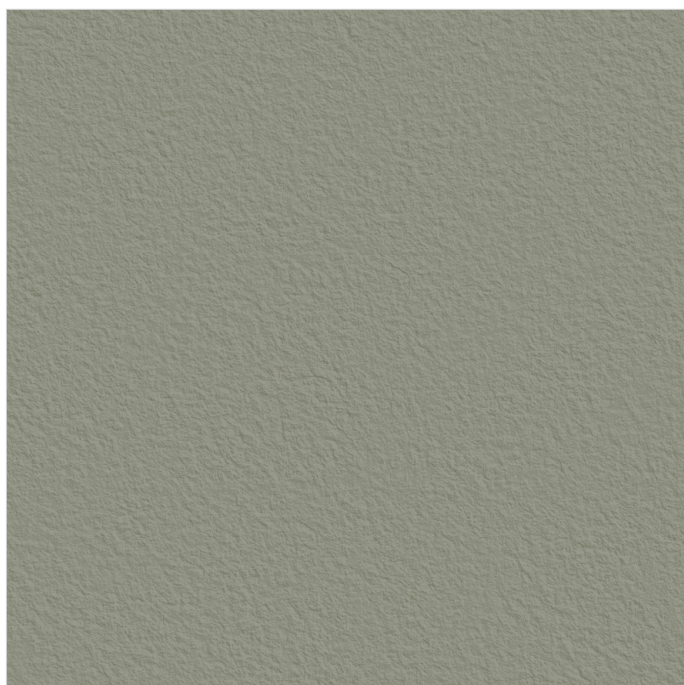
IMPACT  
RESISTANCE



HIGH  
STRENGTH



KOTA MATT



KOTA RIVER

**600x  
600mm**

-  
**Matt Finish &  
River Punch**



ZERO  
MAINTENANCE



LOW WATER  
ABSORPTION



IMPACT  
RESISTANCE



HIGH  
STRENGTH

## TECHNICAL SPECIFICATION

TECHNICAL DETAILS	STANDARD AS PER ISO-13006/EN176 GROUP BIa	MEAN VALUE OF MOZART FULL BODY VITRIFIED TILES	METHOD OF TEST
Deviation In Length & Width	± 0.60%	± 0.10%	ISO-10545-2
Deviation In Thickness	± 5.00%	± 2.00%	ISO-10545-2
Straightness Of Sides	± 0.50%	± 0.10%	ISO-10545-2
Rectangularity	± 0.60%	± 0.10%	ISO-10545-2
Surface Flatness	± 0.50%	± 0.10%	ISO-10545-2
Water Absorption	≤ 0.50%	E ≤ 0.05%	ISO-10545-3
Breaking Strength	1300 N	2000 N	ISO-10545-4
Abrasion Resistance	Max. 175mm	Max. 145mm <sup>3</sup>	ISO-10545-6
Moh's Hardness	Min. 6	≥ 6*	EN101
Frost Resistance	Frost Proof	Frost Proof	ISO-10545-12
Thermal Shock	No Damage	No Damage	ISO-10545-9
Moisture Expansion	Nil	Nil	ISO-10545-10
Thermal Expansion	< 9 x 10 <sup>-6</sup>	< 6 x 10 <sup>-6</sup>	ISO-10545-8
Resistance of House Hold Chemical	No Damage	No Damage*	ISO-10545-13
Stain Resistance	Resistance	Resistance*	ISO-10545-14
Slip Resistance(friction Co Efficient)	> 0.40	> 0.40	ISO-10545-17

**Disclaimer:** Mozart reserves the right to delete & amend either totally or partially, any of the colors, shapes, sizes, references and other technical specifications contained in this catalogue at anytime. The colors of tiles shown in this catalogue are purely illustrative to printing process. Please refer actual sample before final selection. The details of sizes, colors and references should be verified for typographical errors.

## PACKING DETAILS

	Size	Pcs. / Box	Weight / Box (approx.)	Coverage Area / Box
<b>BOLD</b> 15MM FULLBODY TILES	600x600mm	2 pcs	22.500 kg (± 300 gm)	7.75 ft <sup>2</sup> or 0.72 mtr <sup>2</sup>

# mozart

THE TILE COMPOSER

---

## MOZART VITRIFIED PVT. LTD.

Survey No. 164/1, 165/2, Sartanpar Road,  
Ratavirda Village, Tal. Wankaner - 363 621,  
Dist. Morbi, Gujarat, INDIA

---

 +91 99099 78923

 [info@mozartvitrified.com](mailto:info@mozartvitrified.com)  
[www.mozartvitrified.com](http://www.mozartvitrified.com)

Follow us on :

