



# Carving

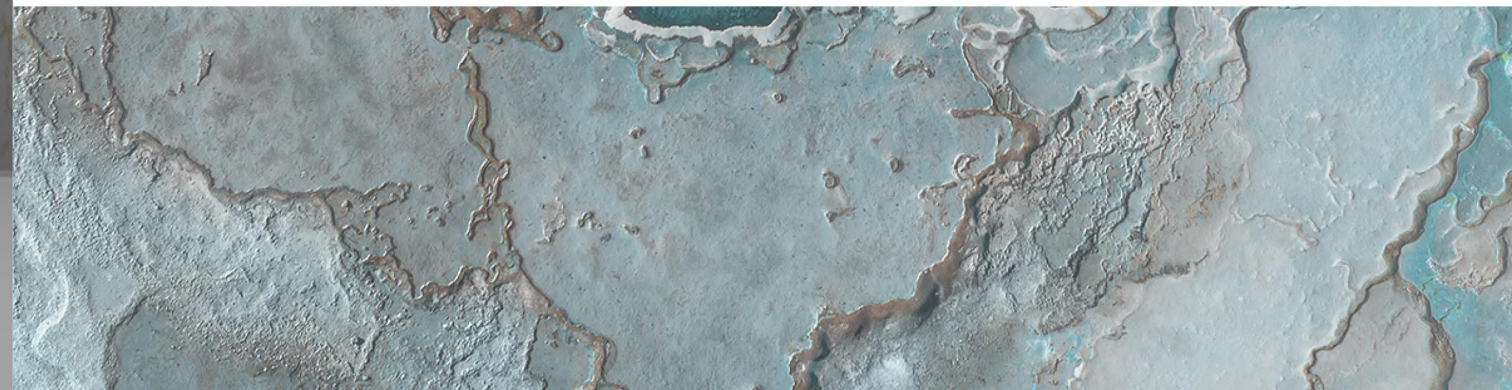
600x1200MM





The strategic perspective of REY is enriched with a new technology, with a horizon of beauty, creativity and functionality, which puts the values of ceramics at the center.

REY'S collections embody the combination of beauty, design and nature, in a perfect equilibrium achieved through what has always been a deliberate and thought-out approach. Our constant commitment, supported by continuous technological research, has enabled us to improve and to develop a "sustainable" porcelain stoneware, made with natural materials and with the partial use of recycled materials



# Research & Development

REY believes in the advancement for better living. Technology has booned us with various innovations, that grant us a better chance to innovate. In earlier times, there was no scope of making scratch proof or slip resistant tiles. But with the new technical machineries, it is possible to manufacture vitrified tiles which have several other benefits as well. Another major factor to help us bring about the latest products and designs in the Ceramic industry is, our research department. At REY, we perform R&D for, each and every product we manufacture beforehand. This helps us understand the best practices required for manufacturing and other significant dynamics.

## Technical Details:



Waterproof



Scratch Resistant



Ecology



Hygienic Surface



Stain Resistant

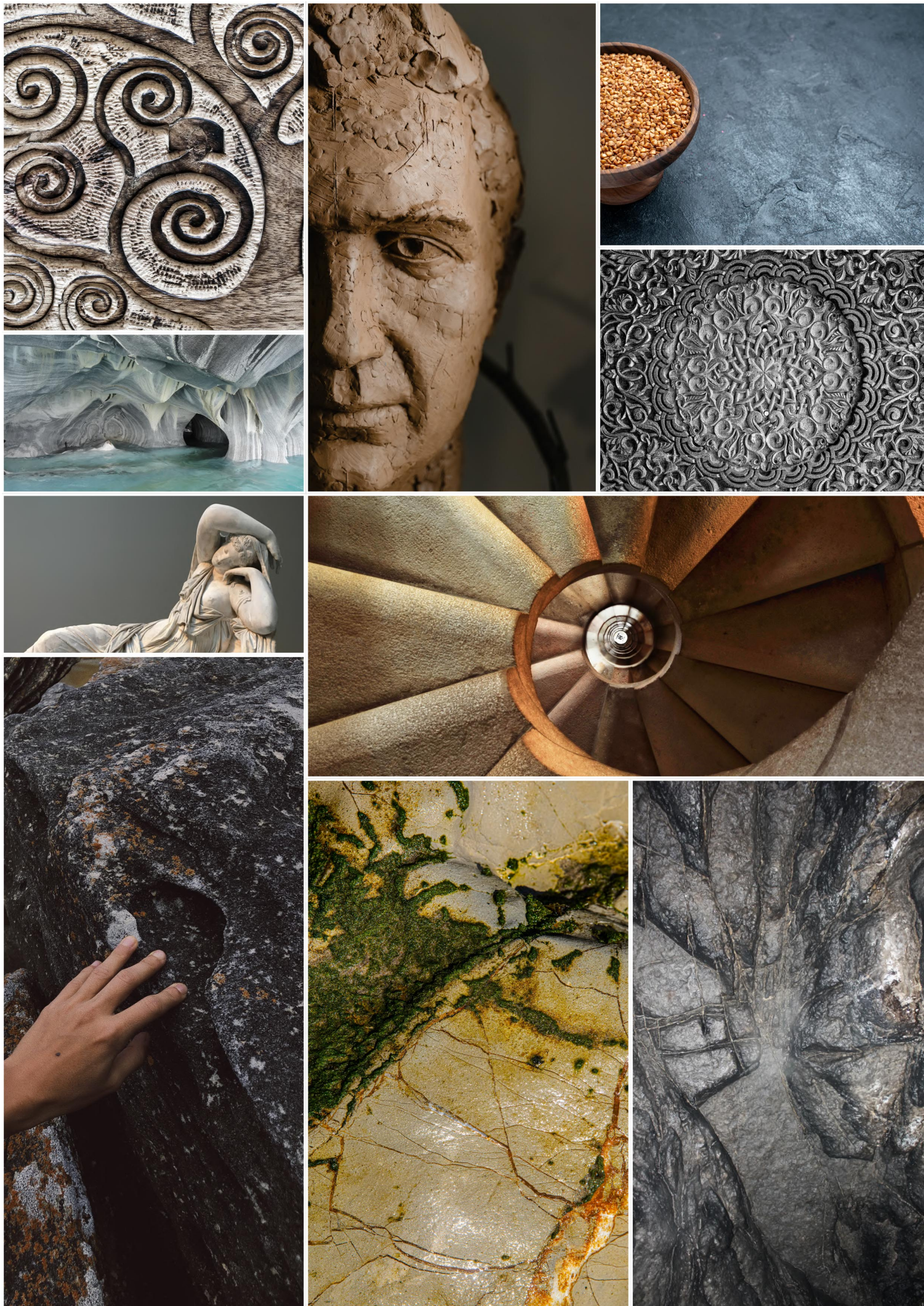


Frost Resistant



Feel The Crave For

*Carving*



# Every tiles is **Masterpiece**

For architecture and design, carving are an excellent planning and style resource, ideal for creating grand, striking effects; they're equally suitable for smaller spaces, offering versatility in terms of composition and material.

Clay features the coated effect typical of carving, with a slightly shiny effect on a matt surface, in a palette of dense colours, both warm and cool, ranging from white through three different shades of grey, from greige to taupe, and three colours with a contemporary soul: corito, mustard and petrol blue, suitable for bringing a touch of character to any setting.



SIZE : 600x1200mm

FINISH : Carving

BEVER DARK



BEVER LIGHT





Wall : Bever Dark / Floor : Bever Light  
Size : 600x1200mm / Finish : Carving



SIZE : 600x1200mm

FINISH : Carving

AUSTIN DARK

AUSTIN LIGHT

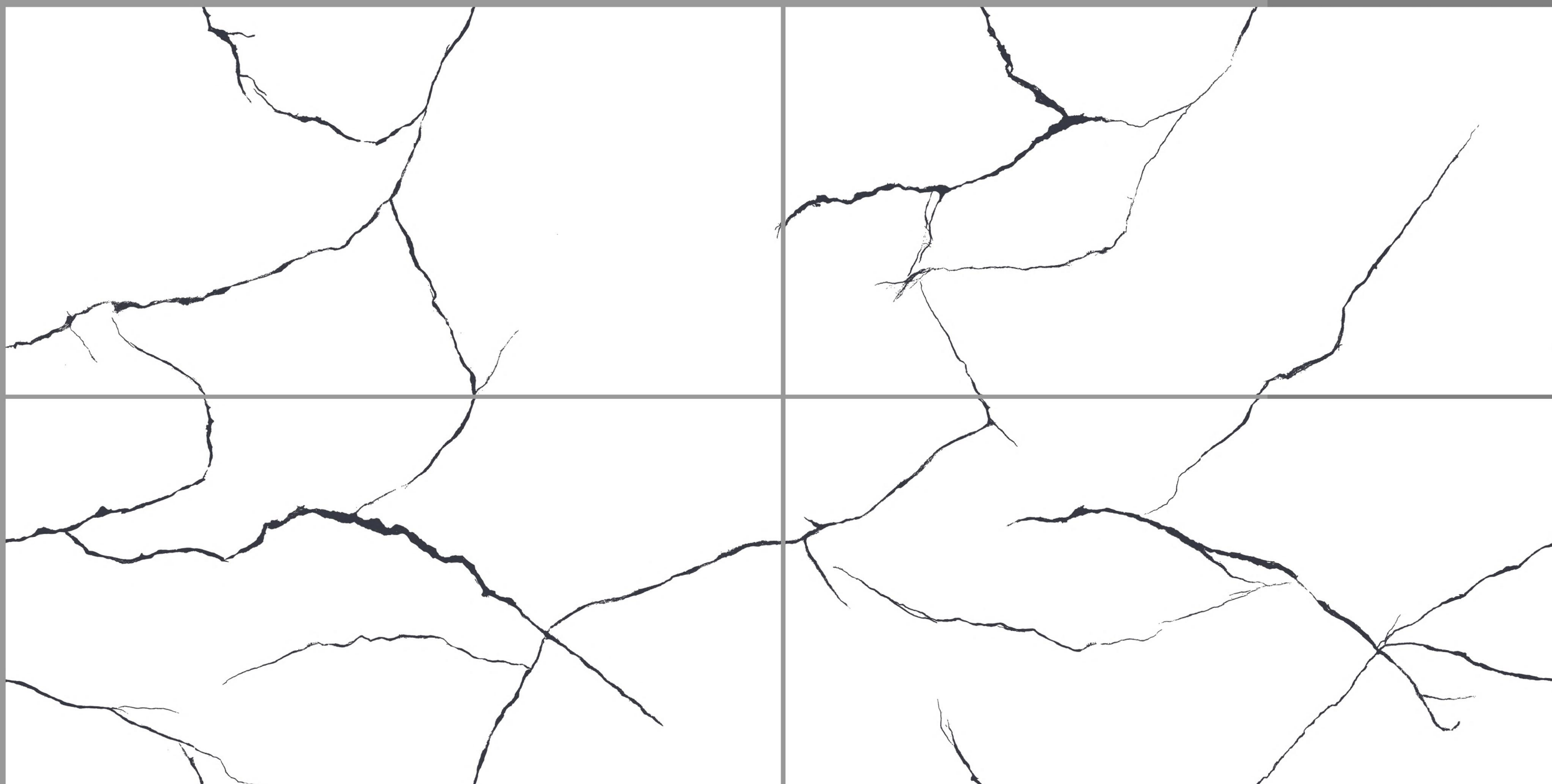




Wall : Austin Dark / Floor : Austin Light  
Size : 600x1200mm / Finish : Carving



# BETTAL BLACK



**Design variants** : Random Design  
**Size** : 600x1200mm  
**Finish** : Carving





# CLOUD ONYX



**Design variants** : Random Design  
**Size** : 600x1200mm  
**Finish** : Carving







CARV CRYSTAL ONYX



CARVING  
600x1200mm

Slab<sup>®</sup>  
marble



CARV REAL SATVARIO



*CARVING*  
600x1200mm

Slab<sup>®</sup>  
marble





CARV SATVARIO VELENCIA



CARVING  
600x1200mm

Slab<sup>®</sup>  
marble





CARV WHITE ONYX



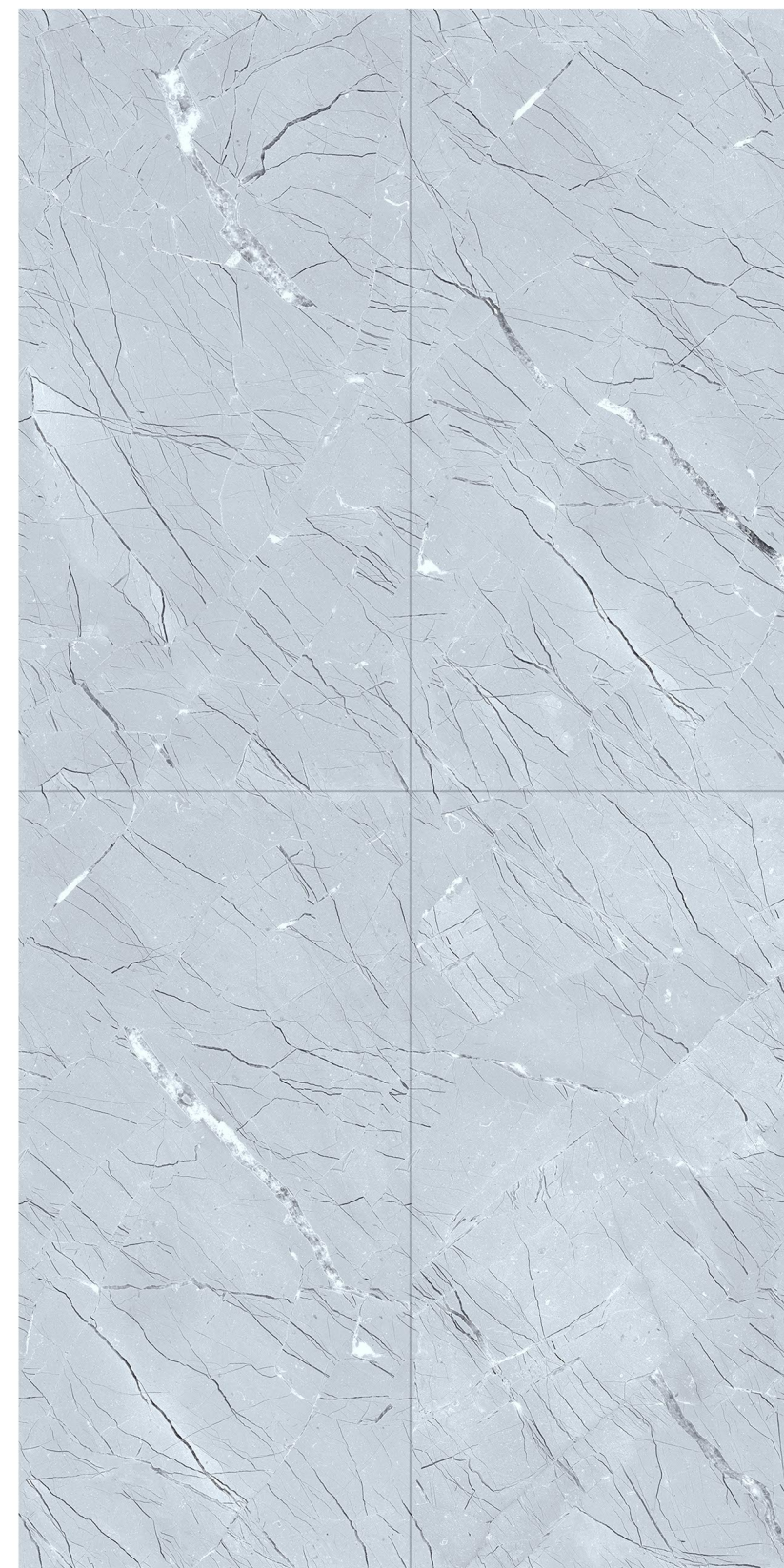
*CARVING*  
600x1200mm

Slab<sup>®</sup>  
marble





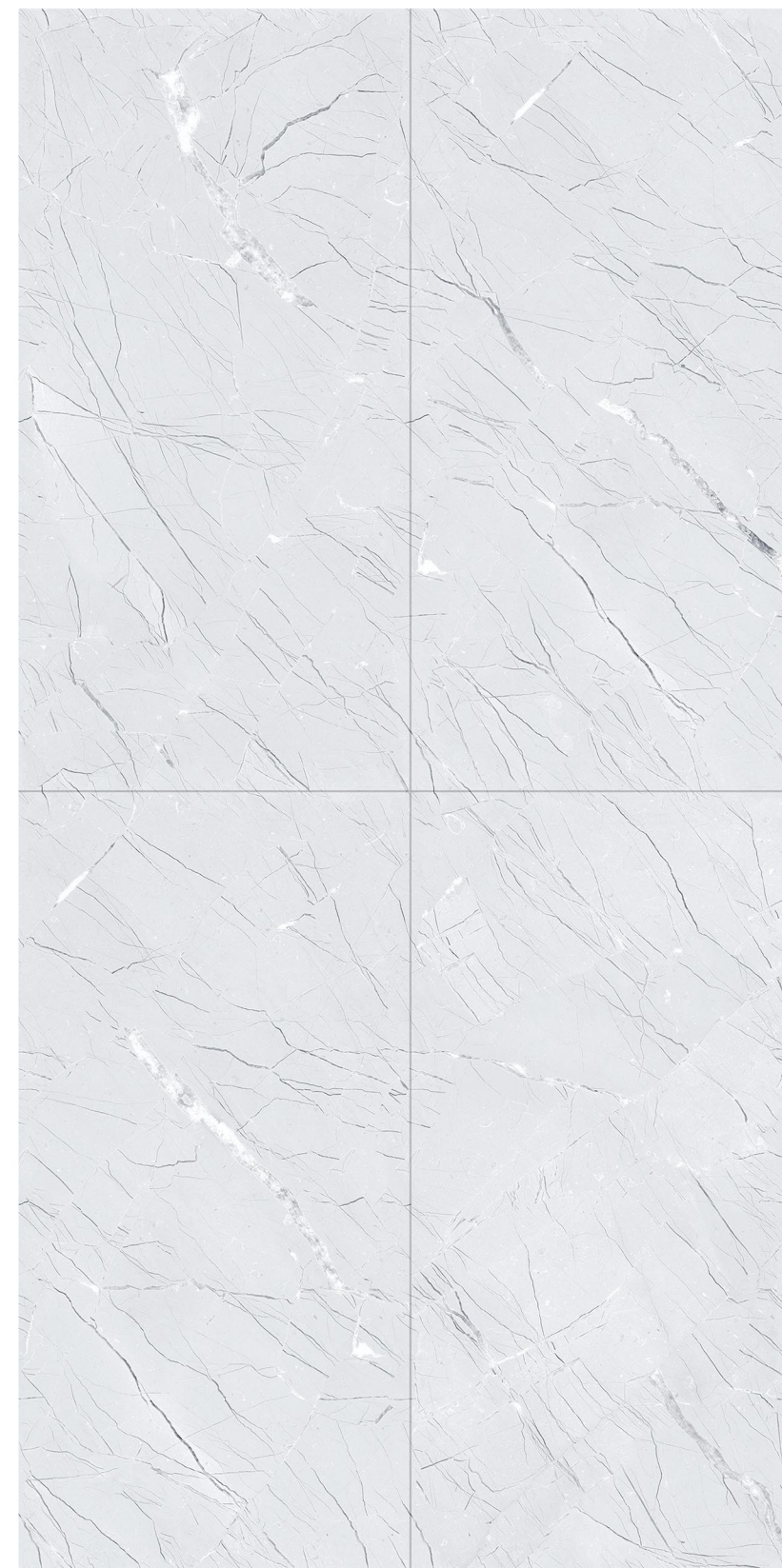
CARV LUNA GREY DARK



LUNA GREY DARK CARVING

*CARVING*  
600x1200mm

CARV LUNA GREY LIGHT



LUNA GREY LIGHT CARVING

*CARVING*  
600x1200mm

CARV ATLANTICA CREMA



ATLANTICA CREMA CARVING

*CARVING*  
600x1200mm