

Go beyond the decorative.
Experience the stunning flexibility of laminates
with real metal surfaces.

DecoMetal® delivers lustrous color and sheen with textures
reflecting energy, modernity and a deep respect for
craftsmanship. Ideal for light-duty horizontal or vertical
applications: walls, furniture, retail fixtures, signage,
exhibits and displays.

REGISTERED OFFICE & PLANT

FORMICA LAMINATES (INDIA) PRIVATE LIMITED
BLOCK NO.591/592, 6TH K.M.STONE, KALOL-VAMAJ ROAD
VILLAGE-PIYAJ,TAL:KALOL GANDHINAGAR – 382721
GUJARAT, INDIA



Diamond Antique Copper
D8280

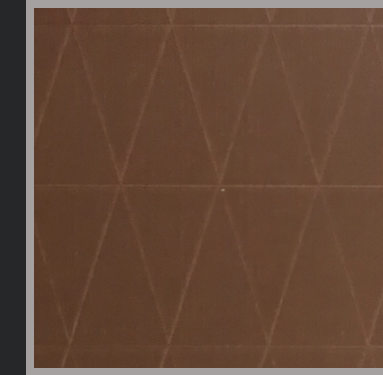
S Warehouse ex-stock

DECOMETAL®

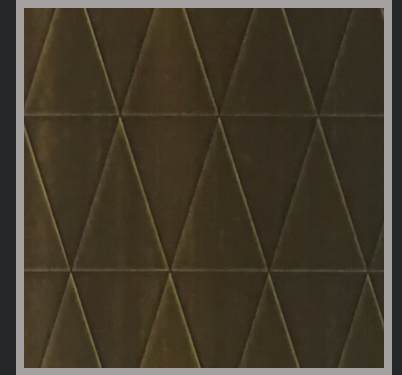
1



Diamond Bronzestone
DH147

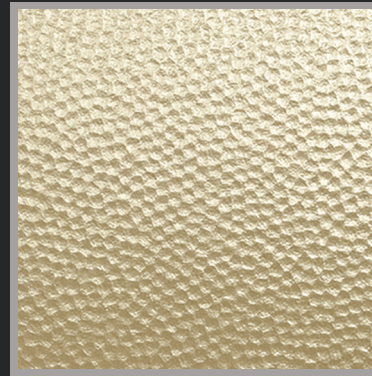


Diamond Antique Copper
D8280



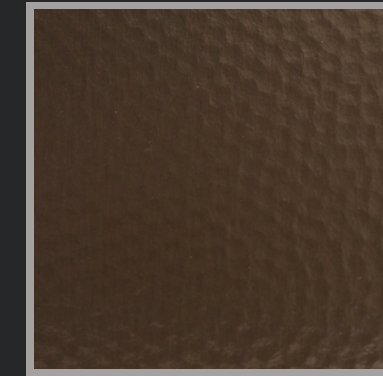
Diamond Antique Brass
D8279

2



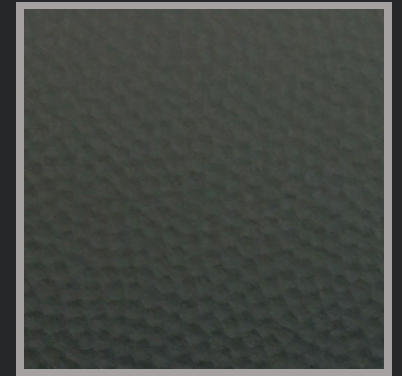
Dimpled Goldtone
D2802

S



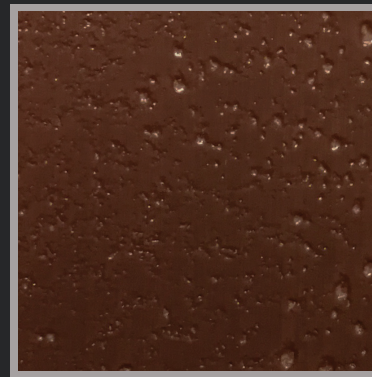
Dimpled Bronzestone
D2807

S

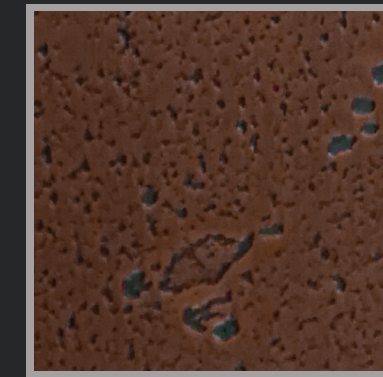


Dimpled Anthracite
DH018

3



Moon Light Copper
D8277

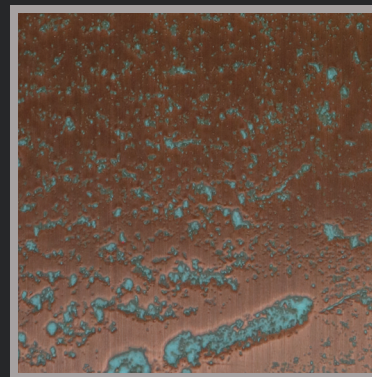


Moon Dark Copper
D8276



Moon Brass
D8278

4



Moon Turquoise Copper
D8275

* D8278 & D8279 - There is a width limitation in design due to the nature of the raw brass foil material. Therefore, there will be a joint line design effect in the middle of the 4' x 8' size full sheet. For full sheet design, please refer to Formica website www.formica.com

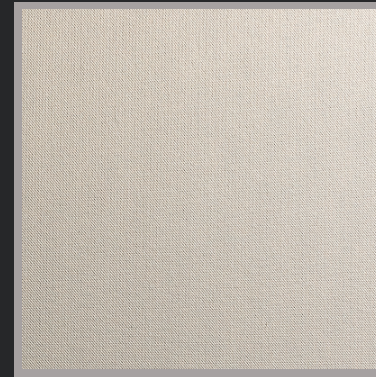


Plex Gold
D5309

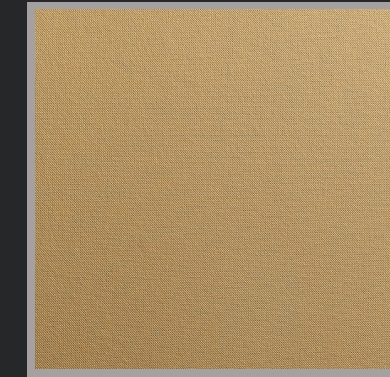
S Warehouse ex-stock

DECOMETAL®

1



Plex Argent
D5306



Plex Gold
D5309

S

2

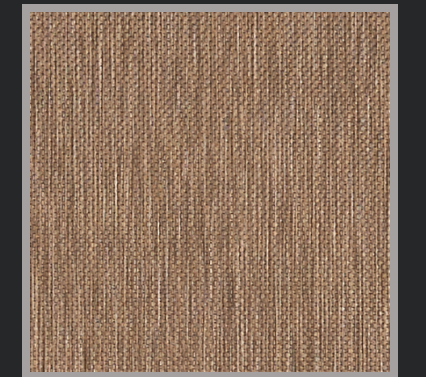


Plex Graphite
D5310

S



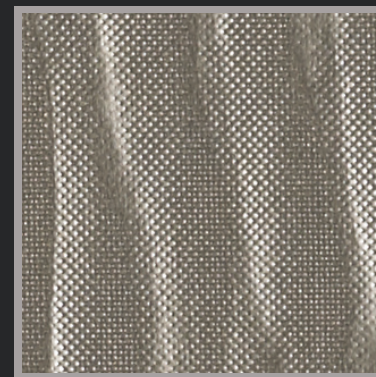
Plex Umbra
D5307



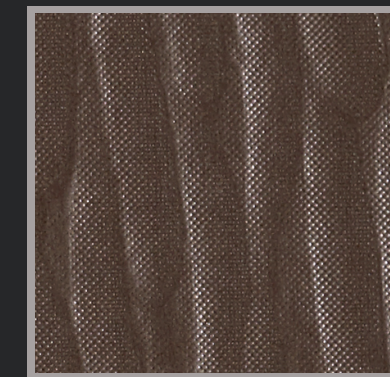
Plex Bronzestone
D6486

S

3



Craft Argent
D6484



Craft Umbra
D6485



Craft Bronzestone
D6483

4



Brushed Umbra
D5312

S

A

B

C

5



Graphite Veil
D5391

S Warehouse ex-stock

DECOMETAL®

1



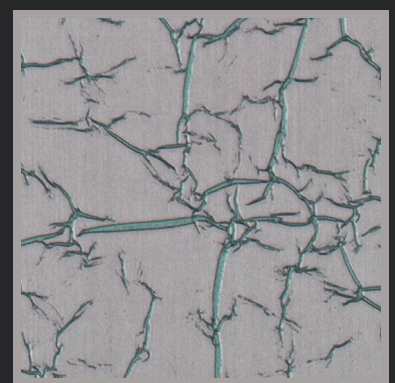
Lounge Steeltone
D2806

S

Lounge Bronzestone
D2805

S

2

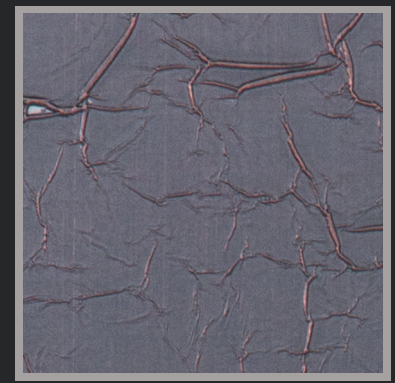


Crisp Gold
D8269

Crisp Anthracite
D8270

Crisp Oxygen
D8271

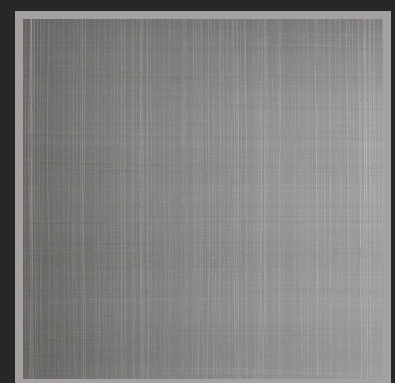
3



Crisp Rose
D8272

Crisp Antique Copper
D8274

4



Cross-Brushed Brownish Grey **S**
D8040

Graphite Veil
D5391

Copper Veil
D5392

A

B

C



Craft Umbra
D6485

S Warehouse ex-stock

DECOMETAL®

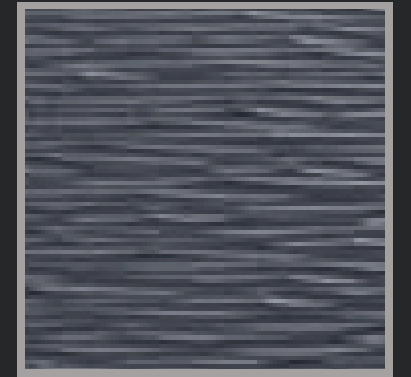
1



Cella Goldtone
D4939



Cella Coppertone
DH003

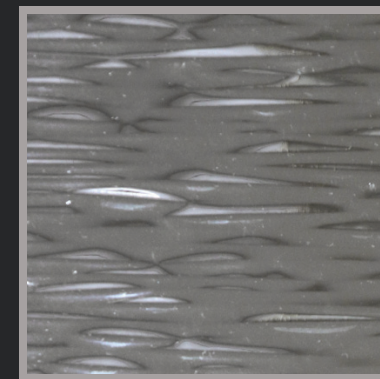


S Cella Black
DH004

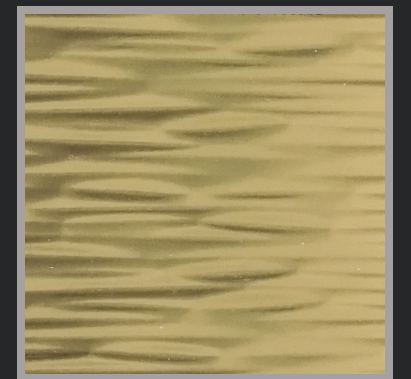
2



Cella Polished Smokey Grey
D8266

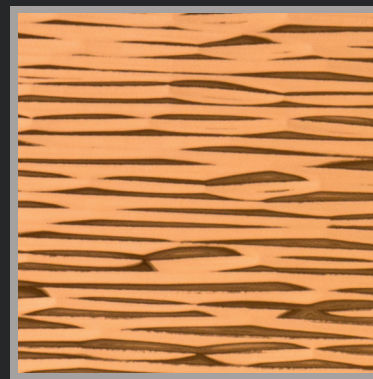


Cella Polished Natural
D8286

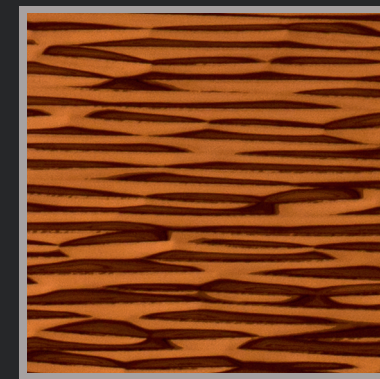


Cella Polished Goldtone
D8287

3



Cella Polished Coppertone
D8265



Cella Polished Tea
D4751

4

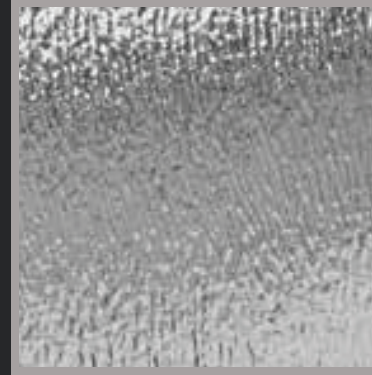


Cascade Goldtone
D8282

S Warehouse ex-stock

DECOMETAL®

1

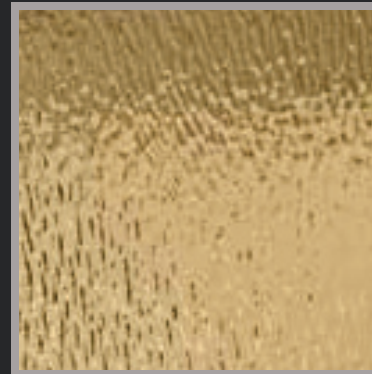


Cascade Natural
D8281



Cascade Smokey Grey
D8284

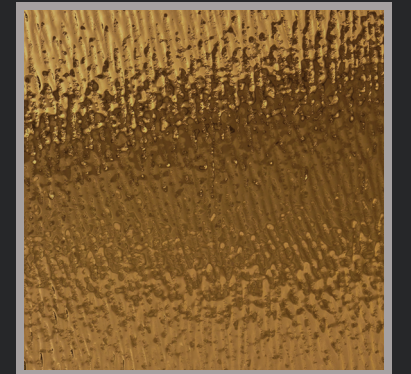
2



Cascade Goldtone
D8282

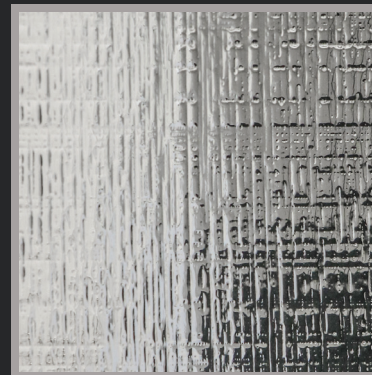


Cascade Coppertone
D8285

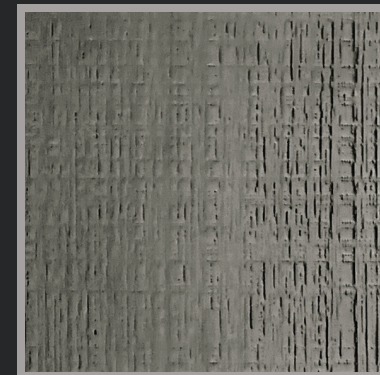


Cascade Tea
D8283

3

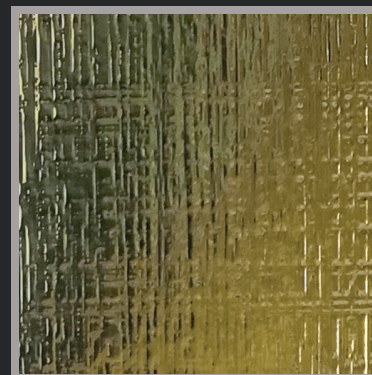


Crossline Polished Natural
D8288

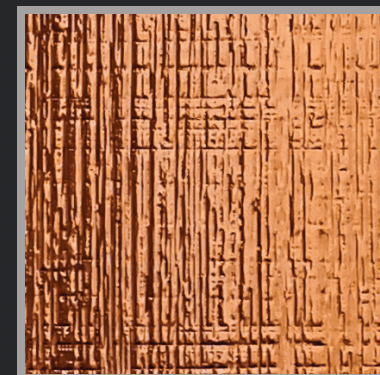


Crossline Polished Smokey Grey
D8291

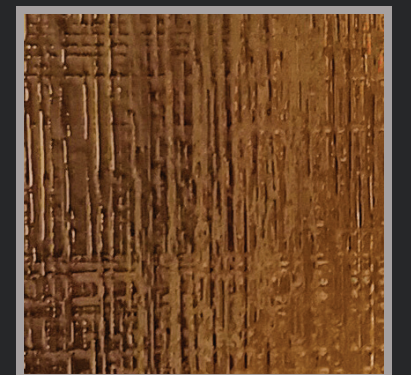
4



Crossline Polished Goldtone
D8289



Crossline Polished Coppertone
D8292



Crossline Polished Tea
D8290

A

B

C

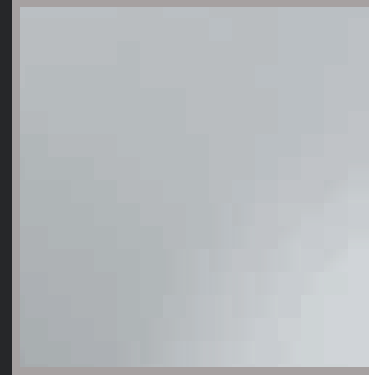


Lava Tea
DH144

S Warehouse ex-stock

DECOMETAL®

1



Mirror Aluminium
D2021



Polished Black
D1990

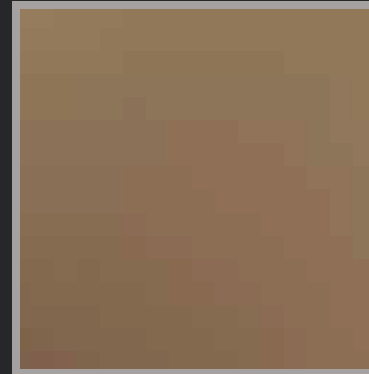
S



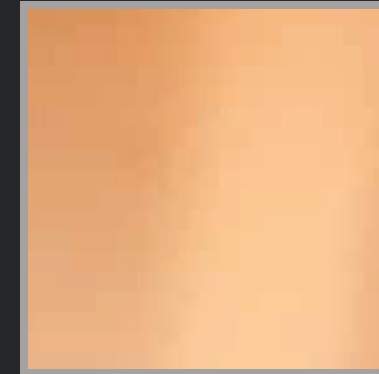
Polished Gold Aluminium
D2041

S

2



Mirror Tea
DH123



Mirror Coppertone
DH008

S

3



Lava Natural
DH141



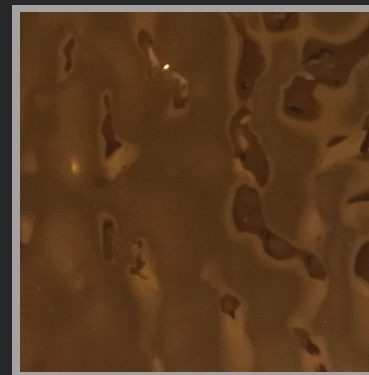
Lava Smokey Grey
D5474



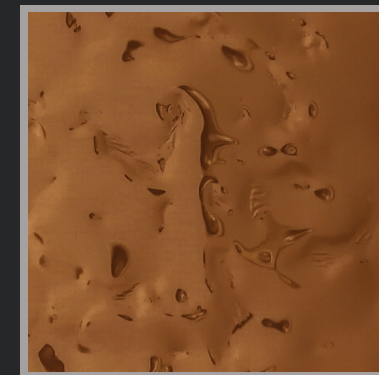
Lava Goldtone
D5471

S

4



Lava Tea
DH144



Lava Coppertone
DH089

S

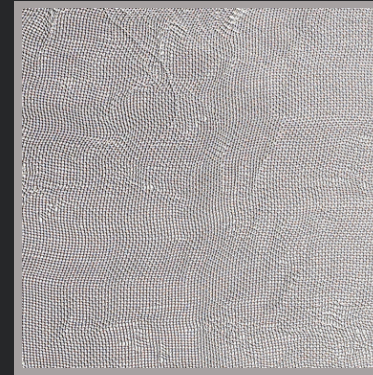


Aluminium Mesh
D2035

S Warehouse ex-stock

DECOMETAL®

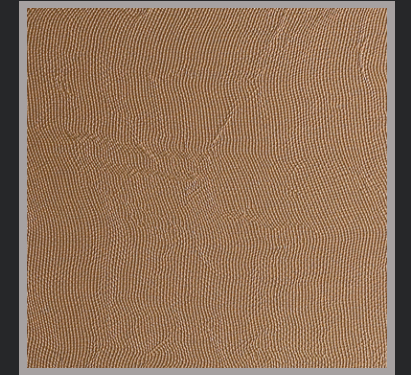
1



Aluminium Mesh
D2035



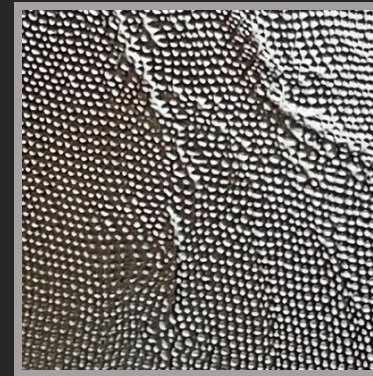
Champagne Mesh
D4941



Bronze Mesh
D4899

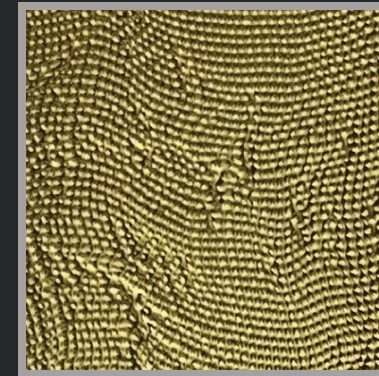
S

2



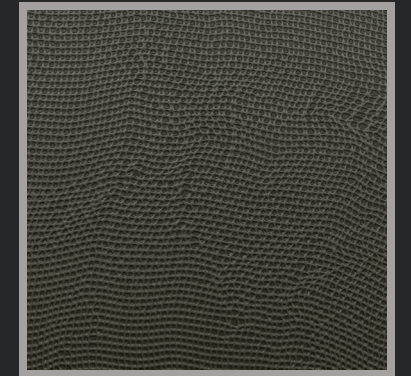
Natural Polished Mesh
DH140

S



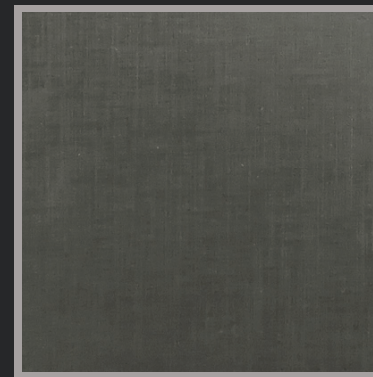
Goldtone Polished Mesh
DH142

S



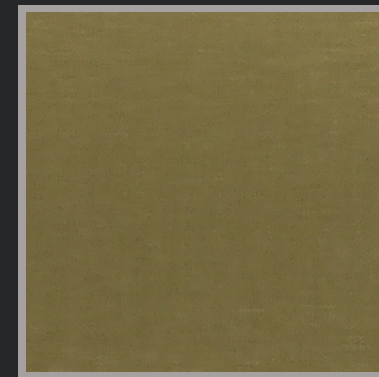
Vintage Mesh
DH148

3



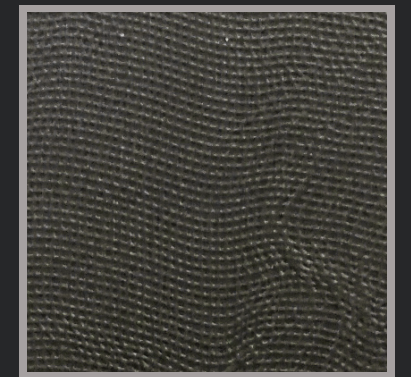
Cross-Brushed Natural
DH035

S



Cross-Brushed Goldtone
DH036

S



Anthracite Mesh
DH039

4



Brushed Graphite
DH038

S

A

B

C

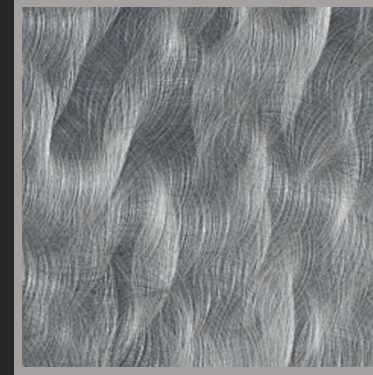


Copper Crush
D8109

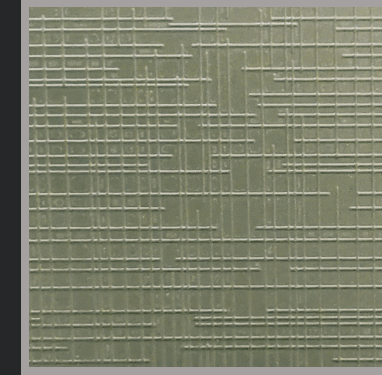
S Warehouse ex-stock

DECOMETAL®

1

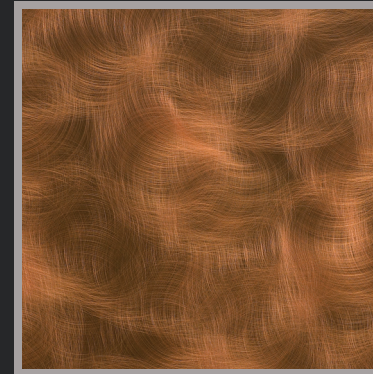


Aluminium Crush
D4116

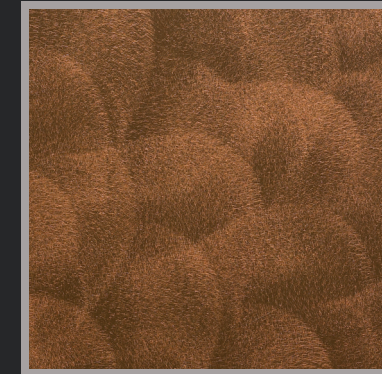


Matrix Champagne
DH014

2



Copper Crush
D8109



Copper Plain Crush Stipple
D8104



Aluminium Brushed Black
D8105

S

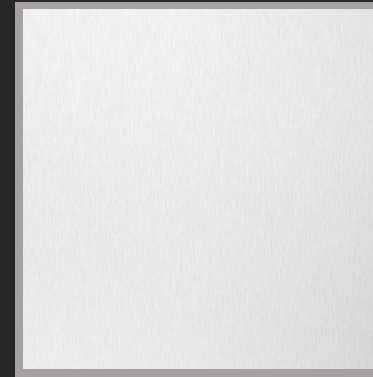


Brushed Copper Aluminium
D2052

S Warehouse ex-stock

DECOMETAL®

1



Brushed Pewter
D2032

S



Aluminium Longline
D4249

S



Bronze Brushed Aluminium
D8103

S

2



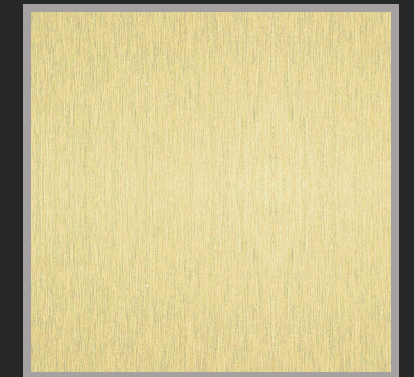
Brushed Aluminium
D2022

S



Brushed Champagne
DH137

S



Brushed Goldtone
D2042

S

3



Brushed Rosegold
DH139

S



Bronzestone Longline
DH138

S



Brushed Copper Aluminium
D2052

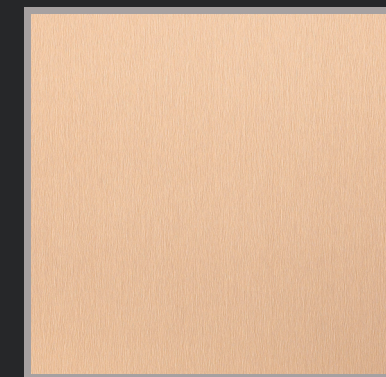
S

4



Brushed Bronzestone
DH005

S



Bronze Brushed Aluminium
D2126

S

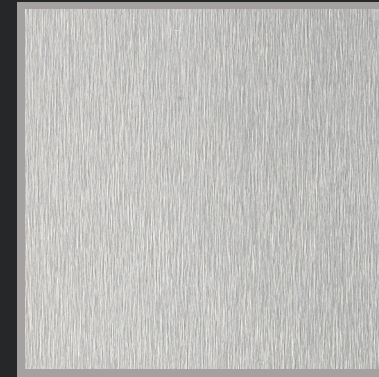


Brushed Stainless Steel
D2178

S Warehouse ex-stock

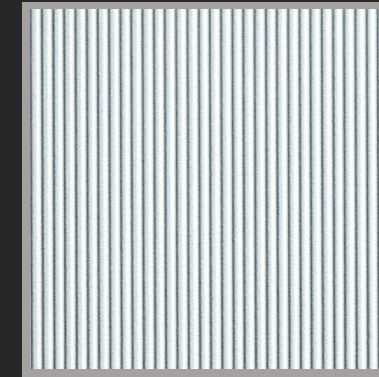
DECOMETAL®

1

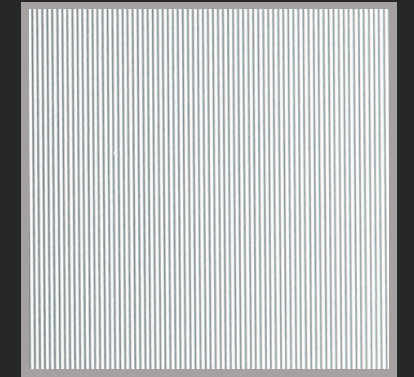


Brushed Stainless Steel
D2178

S

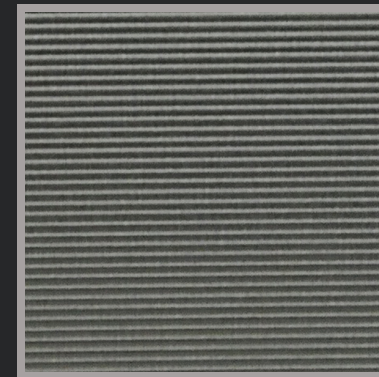


Vertical Corrugated Steeltone
DH187

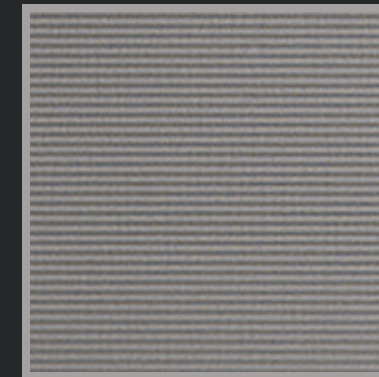


Vertical Corrugated Matte Aluminium
D4748

2



Horizontal Corrugated Steeltone
D4740



Horizontal Corrugated Matte Anthracite
D4778



Matte Bronze Aluminium New
D2006

S Warehouse ex-stock

DECOMETAL®

1



Matte Bronze Aluminium New
D2006

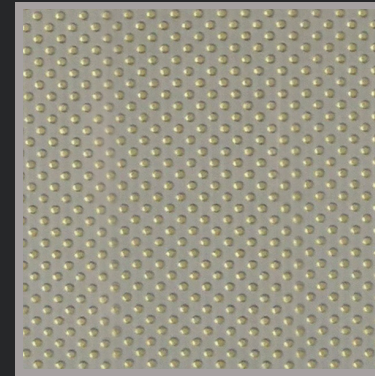


Matte Gunmetal
DH007

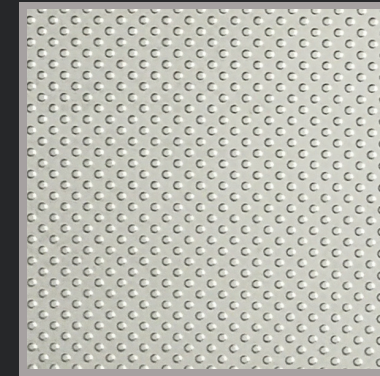


Satin Steeltone
DH094

2



Dots Reverse
DH098



Dots Steeltone
DH105



Footplate Steeltone
DH020

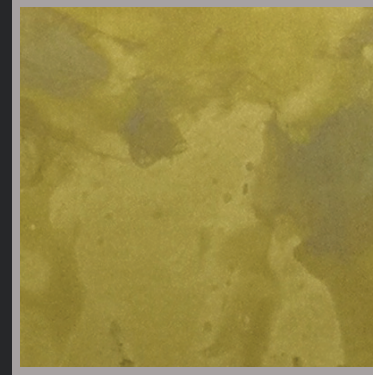


Copper Stratos Diagonal
D4691

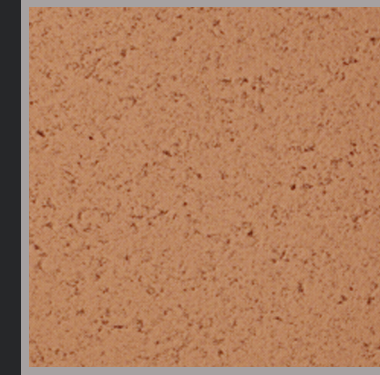
S Warehouse ex-stock

DECOMETAL®

1



Copper Brass Antique
DH091



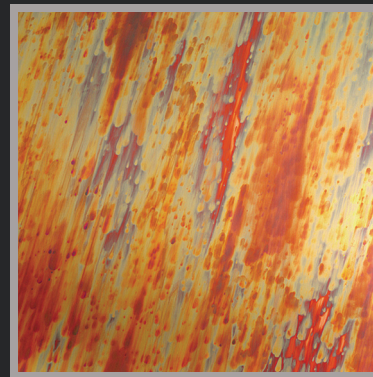
Light Hammer Copper Antiqued
D2121



Korten
D5316

S

2



Copper Stratos Diagonal
D4691



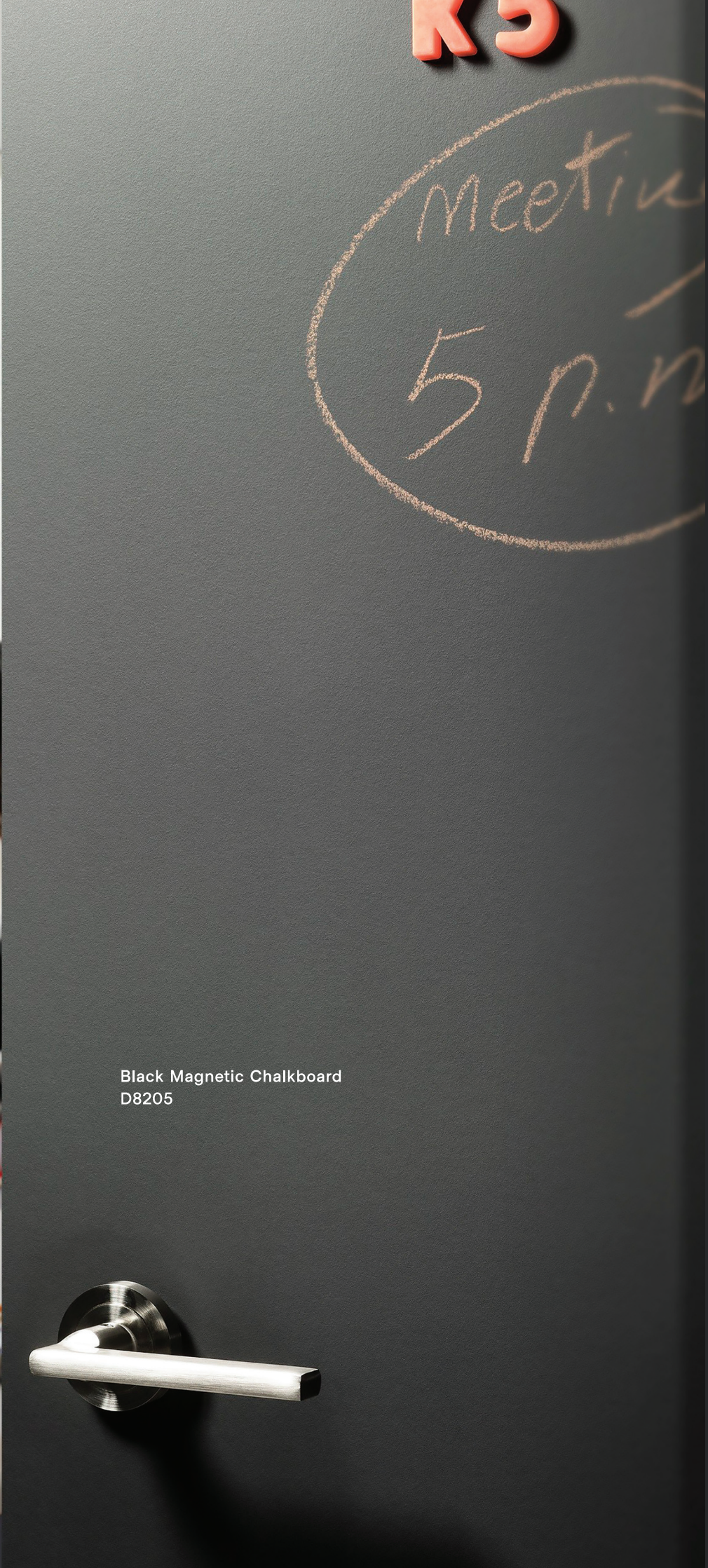
Copper Antique
D1999



Copper Maple Leaves
D2113

S

* **DH091**-There is a width limitation in design due to the nature of the raw brass foil material. Therefore, there will be a joint line design effect in the middle of the 4' x 8' size full sheet. For full sheet design, please refer to Formica website www.formica.com

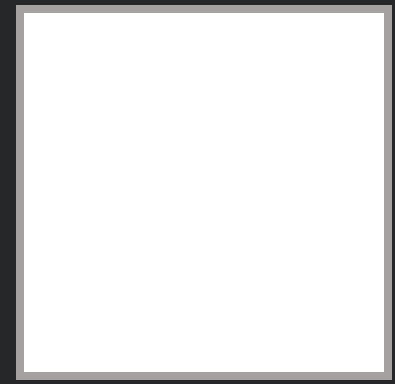


Black Magnetic Chalkboard
D8205

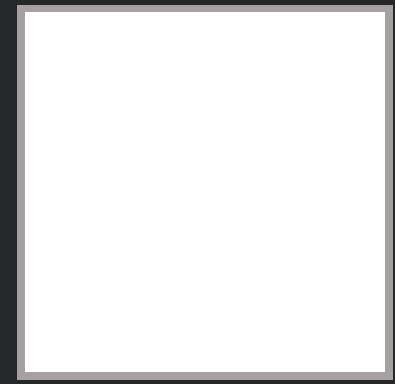
S Warehouse ex-stock

MAGNETIC LAMINATE

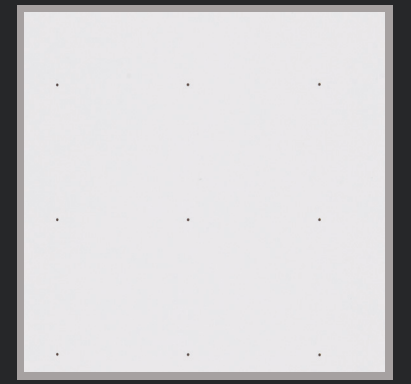
1



Projector Matte
D8207
* For projection purposes only



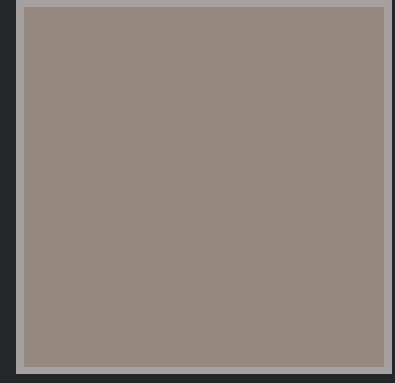
Gloss Magnetic Whiteboard **S**
D8206



Grid-point Gloss Whiteboard **S**
D8202

* D8202-As the distance between each dot is 5cm, the grid-point on D8202 might not be visible from the sample chips in this folder

2

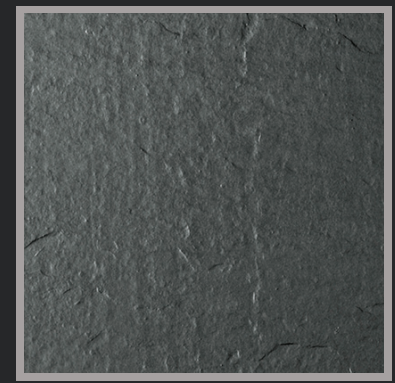


Macchiato Magnetic Chalkboard
D8234

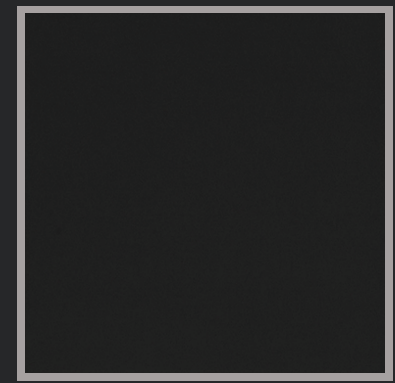


Green Magnetic Chalkboard **S**
D8211

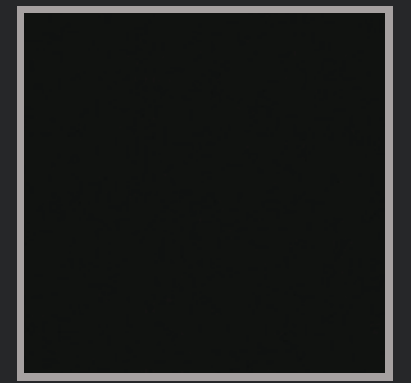
3



Slate Black
D8267



Black Matt Glatt (without magnetic effect)
DH026



Black Magnetic Chalkboard **S**
D8205

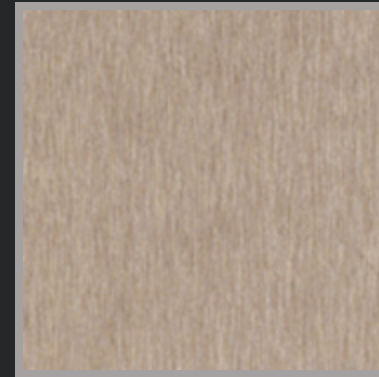


Projector Matte
D8207

S Warehouse ex-stock

MAGNETIC LAMINATE

1

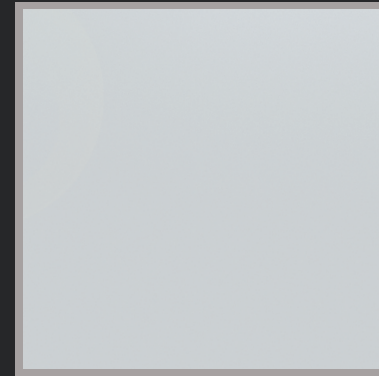


Raw Magnetic Board
D4702



Applegreen Magnetic Whiteboard
DH112

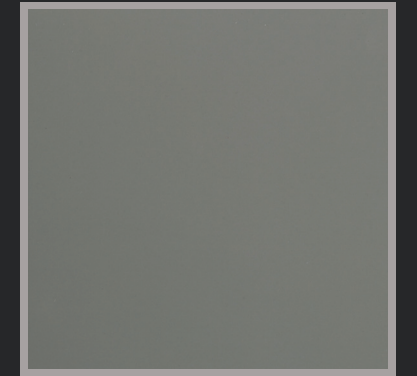
2



Light Grey Magnetic Whiteboard **S**
DH110



Stone Grey Magnetic Chalkboard
DH029

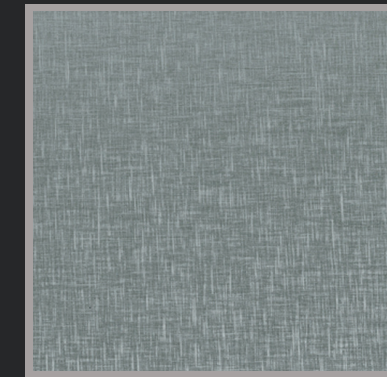


Stone Grey Magnetic Whiteboard
DH028

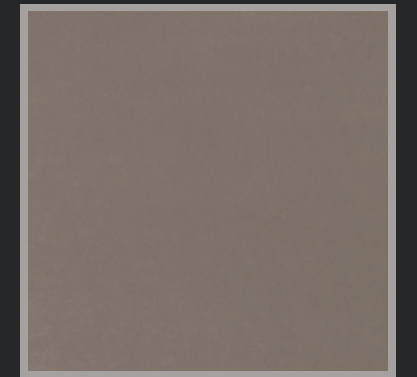
3



Brushed Magnetic Board
D4508



Cross-Brushed Magnetic Board
DH030



Macchiato Magnetic Whiteboard
DH031

ABOUT US

SINCE 1913

FORMICA'S LOGO HISTORY



FORMICA'S FOUNDING

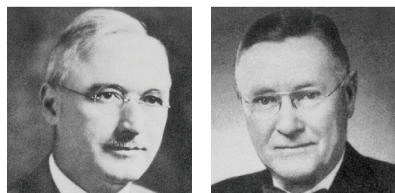
Formica® was founded in Cincinnati in 1913 by two young men, Herbert A. Faber and Daniel J. O'Conor. Their high-pressure plastic resins were intended to serve as electrical insulators replacing mineral Mica, which was used for that purpose at the time. Hence the name "Formica" was chosen. World-renowned artists and architects had also begun to recognize the potential of the decorative laminates and specified them for modernist and art deco interiors.

FORMICA'S SERVICES

Formica® offers a complete series of surface decorative products, including High Pressure Laminate, Compact® Grade, ColorCore®, DecoMetal®, Formica® Veneer, Formica® Custom Graphics™, and Formica® CHGuard® Series, etc. All Formica® High Pressure Laminates conform to European BS EN438: 2008 standards. And meanwhile, we have got the certification of ISO 9001: 2008, 14001, OHSAS 18001, and GREENGUARD.

Formica® owns manufacturing bases worldwide, with four located in Asia. Major bases are located in Ahmedabad (India), Shanghai (China), Jiujiang (China), Hsinchu (Taiwan) and Bangkok (Thailand).

FORMICA'S CORPORATION FOUNDERS



Herbert A. Faber Daniel J. O'Conor

As a professional word, "Formica" has been recorded in The Oxford English Dictionary, and as a replacement for decorative laminates.



CERTIFICATIONS

Formica® Sustainability Statement

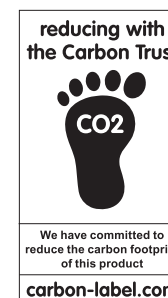
Formica® Sustainability Statement With sustainability a concern for the global community, Formica Group makes it a priority to offer architects, designers and consumers a full range of environmentally friendly surfacing products. Formica Group continually strives to create innovative products that promote a healthier environment. Find out more about how we're putting 'green' principles into practice.

GREENGUARD Certification

Formica Group has taken significant steps to ensure that its products promote a healthy indoor mes, offices, schools and other indoor environments. According to the US Environmental Protection Agency (USEPA), the most effective way to reduce indoor air pollution is to reduce or eliminate harmful chemical emissions. Formica takes pride in meeting the strict emissions limits of the GREENGUARD Environmental Institute and in achieving GREENGUARD Certification for Indoor Air Quality for Formica® Laminates. Formica® Laminates, ColorCore® Compact and DecoMetal® are certified in Asia according to the GREENGUARD Certification and GREENGUARD Gold Certification standards for Indoor Air Quality.



Carbon Reduction Label



Formica Group becomes the first laminate manufacturer in the world to be awarded with Carbon Trust's Carbon Reduction Label. Formica Group is demonstrating its ongoing commitment to reducing its global environmental impact by undergoing carbon footprint assessment and labelling products with the Carbon Reduction Label. Formica Group is pleased to announce that it has measured the carbon footprint for its range of High Pressure Laminates (HPL), Continuous Pressure Laminates (CPL), Compact Laminates and Bonded Worktops, which is now qualified to carry the Carbon Trust's Carbon Reduction Label.

DECOMETAL®

FORMICA® DecoMetal® PRECAUTIONS

Application Restrictions

A protective coating is supplied on all sheets of DecoMetal® laminates for protection during handling, fabrication and transport. It is recommended that the protective coating is left on the laminate until the finished product is installed and ready for use. Directional patterns have an arrow on the protection coating indicating proper direction for application.

Damage, scratches or wear to the surface of the colored aluminum patterns will reveal silver natural aluminum. Mirror finishes may show some small dimples and, in certain lighting conditions, may display slight color changes. Therefore, prior to fabrication, mirror finish metal laminates should be viewed under lighting conditions specific to the application by peeling back a portion of the protection coating for visual inspection.

For DecoMetal® D8278 Moon Brass, D8279 Diamond Antique Brass, and DH091 Copper Brass Antique, there is a width limitation in design due to the nature of the raw brass foil material. Therefore, for these 3 items, there will be a joint line design effect in the middle of the 4' x 8' size full sheet. For full sheet design, please contact Formica sales representative.

DecoMetal® D5316 Korten features a melamine surface incorporating iron particles. Some magnetic effect may be evident. Sparks can be emitted during processing. In addition, D5316 Korten is a hand-made design and each individual sheet is unique. Variations between sheets are characteristic of the design and manufacturing process.

Colour Restrictions

Due to deviations that are inherent to natural metal products, Formica® DecoMetal® products may display a range of color shades, which do not indicate a product defect. Check that all sheets are of consistent shading before fabrication. Lift a corner of the protection coating to check shading; reposition protection coating after color check to protect the surface during fabrication.

Formica® DecoMetal® is directional and may show a color shift when viewed at different angles. It is absolutely necessary that the running direction is the same, and the general appearance checked, before assembly. Arrows are printed on the protection coating of items that have a directional pattern, indicating alignment direction. Do not remove the protection coating prior to fabrication.

Exposure of Formica® DecoMetal® sheets to direct sunlight may produce color change in the tinted surface coating. Any slight change in color over time does not indicate a product defect.

Occasionally, interference colors (Newton rings) can occur on polished, anodized aluminum surfaces. Check all polished aluminum laminates under the relevant lighting conditions before fabrication by lifting a corner of the protection coating; reposition the protection coating after checking to protect the surface during fabrication.

Precautions

All laminates of thickness 2mm or less must be supported by a suitable substrate.

Plywood, chipboard and medium density fibreboard (MDF) are substrate materials which lend themselves to good fabrication.

FORMICA® MAGNETIC LAMINATE PRECAUTIONS

Formica® Magnetic Laminate

Formica® Magnetic Laminate should be used in well air-conditioned rooms without exposing to direct heat. Surface temperature should not be allowed to exceed 60°C to avoid surface cracking.

Care should be taken when cutting the magnetic laminate sheets as sparks and flying chippings can occur. Eye protection must be worn even when guards are in place!

Gloss Surface

Text and images can be drawn onto the surface using good quality drywipe marker pens or water-soluble liquid chalk pens. This can be removed using a felt-based eraser.

Note: The longer the images or text is left on the surface, the more difficult they are to remove. Extra effort may be required to remove stubborn liquid chalk residue.

Matte Surface

Text and images can be drawn onto the surface using conventional classroom chalks and water-soluble liquid chalk pens. Conventional classroom chalks can be removed using a soft cloth or a felt chalkboard eraser. Water-soluble liquid chalk pens can be removed with a soft damp cloth.

Matte surfaces (e.g. D8207) are especially developed as visual display projection surfaces with the properties of low reflective surfaces.

General Note on Board Markers

Text and images can be drawn onto the surface using appropriate board markers and it can be removed using a soft cloth or a felt chalkboard eraser.

Depending on the quality of the board markers, no ghosting should occur, however if some ghosting may be visible from the residue left on the surface, it can be removed using a damp cloth.

Please note that some surface finishes have limited dry wipe capabilities and that frequent, intensive cleaning is recommended to be done on a regular basis to help remove ghosting and chalk residues.

FABRICATION GUIDANCE

Handling

Care should be taken when handling decorative laminates to avoid breakages and damage. When loading and unloading, sheets should be lifted, not slid. Abrasion between decorative faces should be avoided.

Individual sheets should be carried with the decorative face towards the body. Sheets become rigid and thus easier to handle if they are bowed along the longitudinal axis. Large sheets should always be handled by two men.

All DecoMetal® laminates should be transported and stored flat, it is not recommended to roll these laminates for transport.

Storage

Formica® laminates should preferably be stored face to face, flat in horizontal racks. The use of a cover board for covering the top sheet and keeping it flat is recommended. If this is impractical, the top sheet should be turned decorative face downwards, to prevent surface damage and warping.

Decorative laminates should always be kept in an enclosed dry store together with corresponding substrate materials, backing boards and adhesives, at a temperature of not less than 18°C (65°F) and relative humidity of no lower than 50%.

Substrate

All laminates of thickness 2mm or less must be supported by a suitable substrate.

Plywood, chipboard and medium density fibreboard (MDF) are substrate materials which lend themselves to good fabrication.

The three purposes of a good substrate are:

1. To support the laminate
2. To resist bowing
3. To meet the required performance specification.

In addition, it is essential that the surface of the substrate should be sufficiently smooth to prevent the transfer of defects through to the decorative laminate surface (commonly known as telegraphing).

Note: MDF is optimal in terms of evenness, and laminate is optimal in terms of structural strength. Temperature and relative humidity may cause dimensional deformation to a certain degree, so in case of large area application, please take into consideration substrate structure and density. The ideal situation is at temperature of 24°C and relative humidity of about 45%.

The refractory board and substrate should be bonded after certain conditions are met. Too damp or dry conditions may influence later bonding to a considerable degree; drier material will not only make bonding difficult, but absorb a large amount of moisture, leading to significant board expansion, i.e. torsional deformation, affecting the construction.

Conditions	Relative Humidity & Moisture Content			Ambient Temperature (°C)		
	Min.	Optimal	Max.	Min.	Optimal	Max.
Relative humidity in operating environment	30%	45%	60%	18%	24%	-
Moisture content for refractory board	4%	5%	6%	18%	24%	-
Moisture content for flakeboard	8%	10%	12%	18%	24%	-

INDEX

Page	Space	Code	English Name	Magnetic	Size	Thickness	Stock
13	B1	D1990	Polished Black		4'x8'	1.0	S
25	B2	D1999	Copper Antique		4'x8'	1.3	
13	A1	D2021	Mirror Aluminium		4'x8'	1.0	
19	A2	D2022	Brushed Aluminium		4'x8'	1.0	S
23	A1	D2006	Matte Bronze Aluminium New		4'x8'	1.0	
19	A1	D2032	Brushed Pewter		4'x8'	1.0	S
15	A1	D2035	Aluminium Mesh		4'x8'	1.3	
13	C1	D2041	Polished Gold Aluminium		4'x8'	1.0	S
19	C2	D2042	Brushed Goldtone		4'x8'	1.0	S
19	C3	D2052	Brushed Copper Aluminium		4'x8'	1.0	S
25	C2	D2113	Copper Maple Leaves		4'x8'	1.3	S
25	B1	D2121	Light Hammer Copper Antiqued		4'x8'	1.3	
19	B4	D2126	Bronze Brushed Aluminium		4'x8'	1.0	S
21	A1	D2178	Brushed Stainless Steel		4'x8'	0.8	S
03	A2	D2802	Dimpled Goldtone		4'x8'	1.0	S
07	B1	D2805	Lounge Bronzestone		4'x8'	1.3	S
07	A1	D2806	Lounge Steeltone		4'x8'	1.3	S
03	B2	D2807	Dimpled Bronzestone		4'x8'	1.0	S
17	A1	D4116	Aluminium Crush		4'x8'	1.0	
19	B1	D4249	Aluminium Longline		4'x8'	1.0	S
29	A3	D4508	Brushed Magnetic Board	M	4'x8'	1.0	
25	A2	D4691	Copper Stratos Diagonal		4'x8'	1.3	
29	A1	D4702	Raw Magnetic Board	M	4'x8'	1.0	
21	A2	D4740	Horizontal Corrugated Steeltone		4'x8'	0.9	
21	C1	D4748	Vertical Corrugated Matte Aluminium		4'x8'	0.9	
09	B3	D4751	Cella Polished Tea		4'x8'	1.3	
21	B2	D4778	Horizontal Corrugated Matte Anthracite		4'x8'	0.9	
15	C1	D4899	Bronze Mesh		4'x8'	1.3	S
09	A1	D4939	Cella Goldtone		4'x8'	1.3	
15	B1	D4941	Champagne Mesh		4'x8'	1.3	
05	A1	D5306	Plex Argent		4'x8'	1.0	
05	B2	D5307	Plex Umbra		4'x8'	1.0	
05	B1	D5309	Plex Gold		4'x8'	1.0	S
05	A2	D5310	Plex Graphite		4'x8'	1.0	S
05	A4	D5312	Brushed Umbra		4'x8'	1.0	S
25	C1	D5316	Korten		4'x8'	1.3	S
07	B4	D5391	Graphite Veil		4'x8'	1.3	
07	C4	D5392	Copper Veil		4'x8'	1.3	
13	C3	D5471	Lava Goldtone		4'x8'	1.3	S

INDEX

Page	Space	Code	English Name	Magnetic	Size	Thickness	Stock
13	B3	D5474	Lava Smokey Grey		4'x8'	1.3	
05	C3	D6483	Craft Bronzestone		4'x8'	1.3	
05	A3	D6484	Craft Argent		4'x8'	1.3	
05	B3	D6485	Craft Umbra		4'x8'	1.3	
05	C2	D6486	Plex Bronzestone		4'x8'	1.0	S
07	A4	D8040	Cross-Brushed Brownish Grey		4'x8'	1.0	S
19	C1	D8103	Champagne Longline		4'x8'	1.0	S
17	B2	D8104	Copper Plain Crush Stipple		4'x8'	1.3	
17	C2	D8105	Aluminium Brushed Black		4'x8'	1.0	S
17	A2	D8109	Copper Crush		4'x8'	1.3	
27	C1	D8202	Grid-point Gloss Whiteboard	M	4'x8'	1.0	S
27	C3	D8205	Black Magnetic Chalkboard	M	4'x8'	1.0	S
27	B1	D8206	Gloss Magnetic Whiteboard	M	4'x8'	1.0	S
27	A1	D8207	Projector Matte	M	4'x8'	1.0	
27	B2	D8211	Green Magnetic Chalkboard	M	4'x8'	1.0	S
27	A2	D8234	Macchiato Magnetic Chalkboard	M	4'x8'	1.0	
09	A3	D8265	Cella Polished Coppertone		4'x8'	1.3	
09	A2	D8266	Cella Polished Smokey Grey		4'x8'	1.3	
27	A3	D8267	Slate Black	M	4'x8'	1.0	
07	A2	D8269	Crisp Gold		4'x8'	1.0	
07	B2	D8270	Crisp Anthracite		4'x8'	1.0	
07	C2	D8271	Crisp Oxygreen		4'x8'	1.0	
07	A3	D8272	Crisp Rose		4'x8'	1.0	
07	B3	D8274	Crisp Antique Copper		4'x8'	1.3	
03	A4	D8275	Moon Turquoise Copper		4'x8'	1.3	
03	B3	D8276	Moon Dark Copper		4'x8'	1.3	
03	A3	D8277	Moon Light Copper		4'x8'	1.3	
03	C3	D8278	Moon Brass		4'x8'	1.3	
03	C1	D8279	Diamond Antique Brass		4'x8'	1.3	
03	B1	D8280	Diamond Antique Copper		4'x8'	1.3	
11	A1	D8281	Cascade Natural		4'x8'	1.3	
11	A2	D8282	Cascade Goldtone		4'x8'	1.3	
11	C2	D8283	Cascade Tea		4'x8'	1.3	
11	B1	D8284	Cascade Smokey Grey		4'x8'	1.3	
11	B2	D8285	Cascade Coppertone		4'x8'	1.3	
09	B2	D8286	Cella Polished Natural		4'x8'	1.3	
09	C2	D8287	Cella Polished Goldtone		4'x8'	1.3	
11	A3	D8288	Crossline Polished Natural		4'x8'	1.3	
11	A4	D8289	Crossline Polished Goldtone		4'x8'	1.3	

INDEX

Page	Space	Code	English Name	Magnetic	Size	Thickness	Stock
11	C4	D8290	Crossline Polished Tea		4'x8'	1.3	
11	B3	D8291	Crossline Polished Smokey Grey		4'x8'	1.3	
11	B4	D8292	Crossline Polished Coppertone		4'x8'	1.3	
09	B1	DH003	Cella Coppertone		4'x8'	1.3	S
09	C1	DH004	Cella Black		4'x8'	1.3	
19	A4	DH005	Brushed Bronzestone		4'x8'	1.0	S
23	B1	DH007	Matte Gunmetal		4'x8'	1.0	
13	B2	DH008	Mirror Coppertone		4'x8'	1.0	S
17	B1	DH014	Matrix Champagne		4'x8'	1.3	
03	C2	DH018	Dimpled Anthracite		4'x8'	1.0	
23	C2	DH020	Footplate Steeltone		4'x8'	1.3	
27	B3	DH026	Black Matt Glatt (without magnetic effect)	M	4'x8'	1.0	
29	C2	DH028	Stone Grey Magnetic Whiteboard	M	4'x8'	1.0	
29	B2	DH029	Stone Grey Magnetic Chalkboard	M	4'x8'	1.0	
29	B3	DH030	Cross-Brushed Magnetic Board	M	4'x8'	1.3	
29	C3	DH031	Macchiato Magnetic Whiteboard	M	4'x8'	1.0	
15	A3	DH035	Cross-Brushed Natural		4'x8'	1.0	S
15	B3	DH036	Cross-Brushed Goldtone		4'x8'	1.0	S
15	A4	DH038	Brushed Graphite		4'x8'	1.0	S
15	C3	DH039	Anthracite Mesh		4'x8'	1.3	
13	B4	DH089	Lava Coppertone		4'x8'	1.3	S
25	A1	DH091	Copper Brass Antique		4'x8'	1.0	
23	C1	DH094	Satin Steeltone		4'x8'	1.0	
23	A2	DH098	Dots Reverse		4'x8'	1.3	
23	B2	DH105	Dots Steeltone		4'x8'	1.3	
29	A2	DH110	Light Grey Magnetic Whiteboard	M	4'x8'	1.0	S
29	B1	DH112	Applegreen Magnetic Whiteboard	M	4'x8'	1.0	
13	A2	DH123	Mirror Tea		4'x8'	1.0	
19	B2	DH137	Brushed Champagne		4'x8'	1.0	S
19	B3	DH138	Bronzestone Longline		4'x8'	1.0	S
19	A3	DH139	Brushed Rosegold		4'x8'	1.0	S
15	A2	DH140	Natural Polished Mesh		4'x8'	1.3	S
13	A3	DH141	Lava Natural		4'x8'	1.3	
15	B2	DH142	Goldtone Polished Mesh		4'x8'	1.3	S
13	A4	DH144	Lava Tea		4'x8'	1.3	
03	A1	DH147	Diamond Bronzestone		4'x8'	1.0	
15	C2	DH148	Vintage Mesh		4'x8'	1.3	
21	B1	DH187	Vertical Corrugated Steeltone		4'x8'	0.9	



INDIA

Formica Laminates (India) Private Limited
Block No.591/592, 6th K.M. Stone, Kalol-Vamaj Road
Village-Piyaj, Tal Kalol Gandhinagar-382721
Gujarat INDIA

TAIWAN

Formica Taiwan Corporation
Taiwan – Taipei
6F., No. 68-70, Section 3, Nanking East Road,
Zhongshan District, Taipei City 104, Taiwan
Tel : (886-2) 2515-1017
Fax : (886-2) 2517-0542

Taiwan – Taichung

No. 122, Jingke Road, Nantun District,
Taichung City 408, Taiwan
Tel : (886-4) 2359-5680
Fax : (886-4) 2359-5890

Taiwan – Kaohsiung

15F.-2, No. 110, Sanduo 4th Road,
Lingya District, Kaohsiung City 802, Taiwan
Tel : (886-7) 330-2365
Fax : (886-7) 330-2175

CHINA

Formica (China) Trading Co., Ltd

China – Shanghai

903, BM InterContinental Business Center,
100 Yutong Road, Shanghai 200070, China
Tel : (86-21) 6010-2688
Fax : (86-21) 6010-2658

China – Beijing

Rm. 530, Grand Pacific Building A, No. 8 Guanghua Road,
Chaoyang District, Beijing 100026, China
Tel : (86-10) 6581-7717
Fax : (86-10) 6581-6733

China – Guangzhou

Rm. 1209, Jie Tai Plaza, No. 218-222 Zhongshan 6 Road,
Yuexiu District, Guangzhou 510180, China
Tel : (86-20) 8132-0258
Fax : (86-20) 8132-0033

China – Dongguan

Rm. 1109, 11/F, B&Q Center Block A, No. 200 Hongfu Road,
Nan Cheng District, Dongguan 523073, China
Tel : (86-769) 2270-2216
Fax : (86-769) 2278-1770

China – Shenzhen

Rm. 1501 – 1504, 15/F, Reith Center (Tower A, Century
Holiday Plaza) No.9030 North of Shennan Road, Nanshan
Area, Shenzhen 518053, China
Tel : (86-755) 8287-4878
Fax : (86-755) 8287-4881

HONG KONG

Formica (Asia) Limited

Room 1305-9, 13/F., Olympia Plaza,
255 King's Road, North Point, Hong Kong
Tel : (852) 2598-0117
Fax : (852) 2598-6577

THAILAND

Formica (Thailand) Co. Ltd.

51/27 Moo 2 Poochaosamingprai Road, Bangyaparak,
Phrapradaeng, Samutprakarn, 10130 Thailand
Tel : (66-2) 701-9600
Fax : (66-2) 384-7537

Thailand Sales Office

216/63-64 L.P.N. Tower, 15th Floor
Nanglinchee Road, Chongnonsee,
Yannawa, Bangkok 10120 Thailand
Tel : (66-2) 285-4473
(66-2) 285-4474
Fax : (66-2) 285-2899

SINGAPORE

Formica (Singapore) Pte. Ltd.

No. 502/502A, Sims Avenue Singapore 387567
Tel : (65) 6514-1313
Fax : (65) 6846-7030

MALAYSIA

Formica (Malaysia) Sdn. Bhd.

B-10-3A, Level 10, Menara Bata, PJ Trade Centre,
No. 8, Jalan PJU 8/8A, Bandar Damansara Perdana
47820 Petaling Jaya, Selangor D.E, Malaysia
Tel : (60-3) 7710-0512
Fax : (60-3) 7727-0510

INDONESIA

Sales Representative Office

Prince Centre Building, 15th Floor, Suite 1503
Jl. Jend Sudirman Kav. 3-4, Jakarta Pusat 10220, Indonesia
Tel : (62-21) 5700-477
Fax : (62-21) 5700-437

PHILIPPINES

Sales Representative Office

Unit 1401 14th Floor, MDI Corporate Center,
10th Avenue Corner 39th Street,
Bonifacio Global City, Taguig, Philippines
Tel : (632) 553-9996
Fax : (632) 856-0407

VIETNAM

Sales Representative Office

Level 3, 414 Nguyen Thi Minh Khai Street,
District 3, Ho Chi Minh City, Vietnam
Tel : (84-28) 3832-6128
Fax : (84-28) 3832-6129



formica-india.com